



# Minerals Exploration Plan on State Nonferrous Metallic Minerals Leases

Submitted by [Vermillion Gold Inc. on July 29, 2021](#) and summarized here by DNR Division of Lands and Minerals

**Exploration summary:** Vermillion Gold Inc. (VGI) submitted a proposed plan to explore for metallic mineral deposits on leased state mineral rights about 11 miles southeast of Big Fork, Minnesota in Itasca County (Figure 1). VGI's plan proposes drilling exploratory borings. VGI drilled exploratory borings in the area last winter.

This summer and fall, VGI plans to drill exploratory borings at 11 drill sites using the rotosonic drilling method with possible reverse circulation and core drilling. All proposed drill sites are on uplands, according to the exploration plan.

Rotosonic drilling uses high frequency vibration of the drill bit to advance and collect cores of soils, glacial sediments, and a short length of the underlying bedrock. Rotosonic borings end shortly after encountering the top of the bedrock. The plan says VGI will seal the borings following regulations set by the Minnesota Department of Health.

**Exploration is proposed on the following State nonferrous metallic minerals leases:** MM-10059-P

**Public Land Survey location:** Part or all of Section 8 of T60N R24W as shown on Figure 1

**Types of exploration activity:** Rotosonic drilling and possibly reverse circulation or core drilling

**Expected time period of activity:** Upon authorization by DNR through October 2021

**Access:** VGI will access the leased lands by existing public and forest road network, and other existing access routes. New temporary trails are proposed to reach the drill sites.

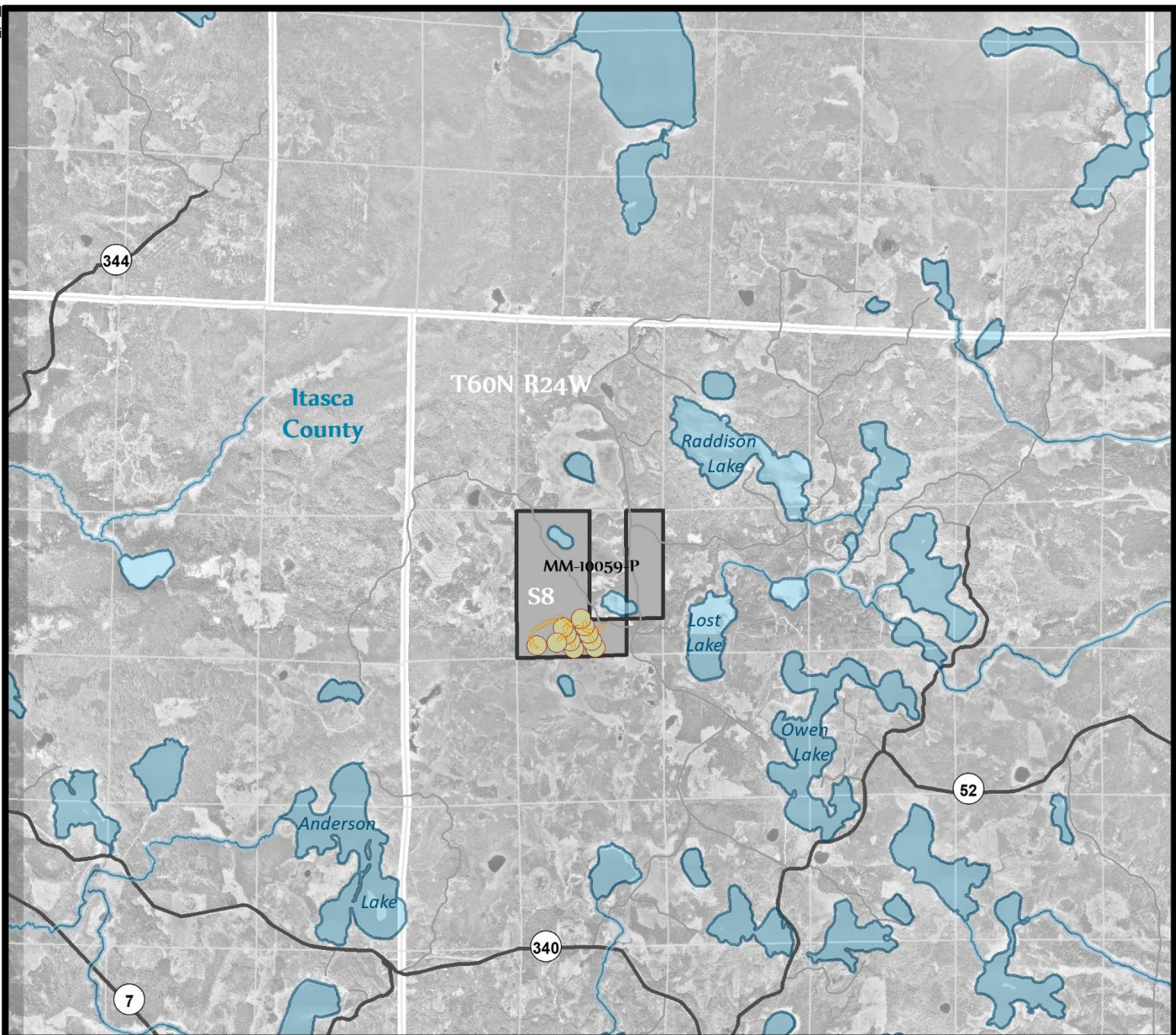
**Surface ownership:** All of the exploration activity proposed will occur on private lands. VGI's plan states it already has an agreement for access. Upon DNR approval, VGI has the right to explore state-owned lands consistent with the exploration plan, any stipulations, and applicable laws and rules.

**Explorer contact:** Kate Lehmann, (612) 338-5584 or [kate@ncmvgeo.com](mailto:kate@ncmvgeo.com)

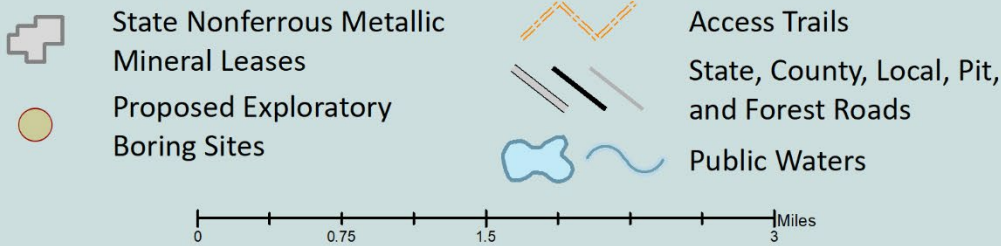
This report is posted on the [DNR's exploration plan webpage](#).

**Maps and Data Disclaimer**

The State of Minnesota makes no representations or warranties express or implied, with respect to the use of the information contained herein regardless of its format or the means of its transmission. There is no guarantee or representation to the user as to the accuracy, currency, suitability, completeness, usefulness, or reliability of this information for any purpose. The user accepts the information "as is." The State of Minnesota assumes no responsibility for loss or damage incurred as a result of any user's reliance on this information. All maps, reports, data, and other information contained herein are protected by copyright. Permission is granted to copy and use the materials herein for any lawful noncommercial purpose. Any user of this information agrees not to transmit or provide access to all or any part of this information to another party unless the user shall include with the information a copy of this disclaimer.



**Figure 1. DNR Overview Map of Exploration Plan**



Environmental features intersecting leases with proposed exploration are shown.

This map is for reference purposes only. The State of Minnesota's land and mineral interests GIS data including lease boundaries is mapped at 40 acre Public Land Survey resolution.

GIS Data Sources - Exploration areas as provided by the Explorer. State minerals leases, public waters inventory, and PLS boundaries from DNR. Highways and roads from MnDOT. Aerial photography from Farm Service Agency.

