



# Minerals Exploration Plan on State Nonferrous Metallic Minerals Leases

Submitted by Vermillion Gold Inc. on April 21, 2021 and summarized here by DNR Division of Lands and Minerals

**Exploration summary:** Vermillion Gold Inc. (VGI) submitted a proposed plan to explore for metallic mineral deposits on leased state mineral rights about 11 miles southeast of Big Fork, Minnesota in Itasca County (Figure 1). VGI's exploration plan proposes conducting geophysical surveys, along a grid area, that may include sampling bedrock and soils using hand tools. VGI drilled exploratory borings in this area last winter.

VGI's new proposal includes a magnetics survey that does not require clearing vegetation from the exploration area. Additionally, the proposal does not include exploration activities on or over ponds and lakes. All other geophysical survey activities on lands along the grid area may require cutting three feet of brush, as needed for access, the proposal states. VGI will conduct the surveys on foot but may use motorized vehicles to traverse the land, where existing site conditions support the use of vehicles.

**Exploration is proposed on the following State nonferrous metallic minerals leases:** MLMN200033 and MM-10059-P

**Public Land Survey location:** Part or all of Sections 8 and 17 of T60N R24W as shown on Figure 1

**Types of exploration activity:** Bedrock and soil sampling, ground-based magnetics and other ground-based geophysics such as induced polarization

**Expected time period of activity:** Upon authorization by DNR through November 2021

**Access:** VGI will access the leased lands by existing public and forest road network, and other existing access routes. The proposal does not include construction of new trails for motorized vehicles.

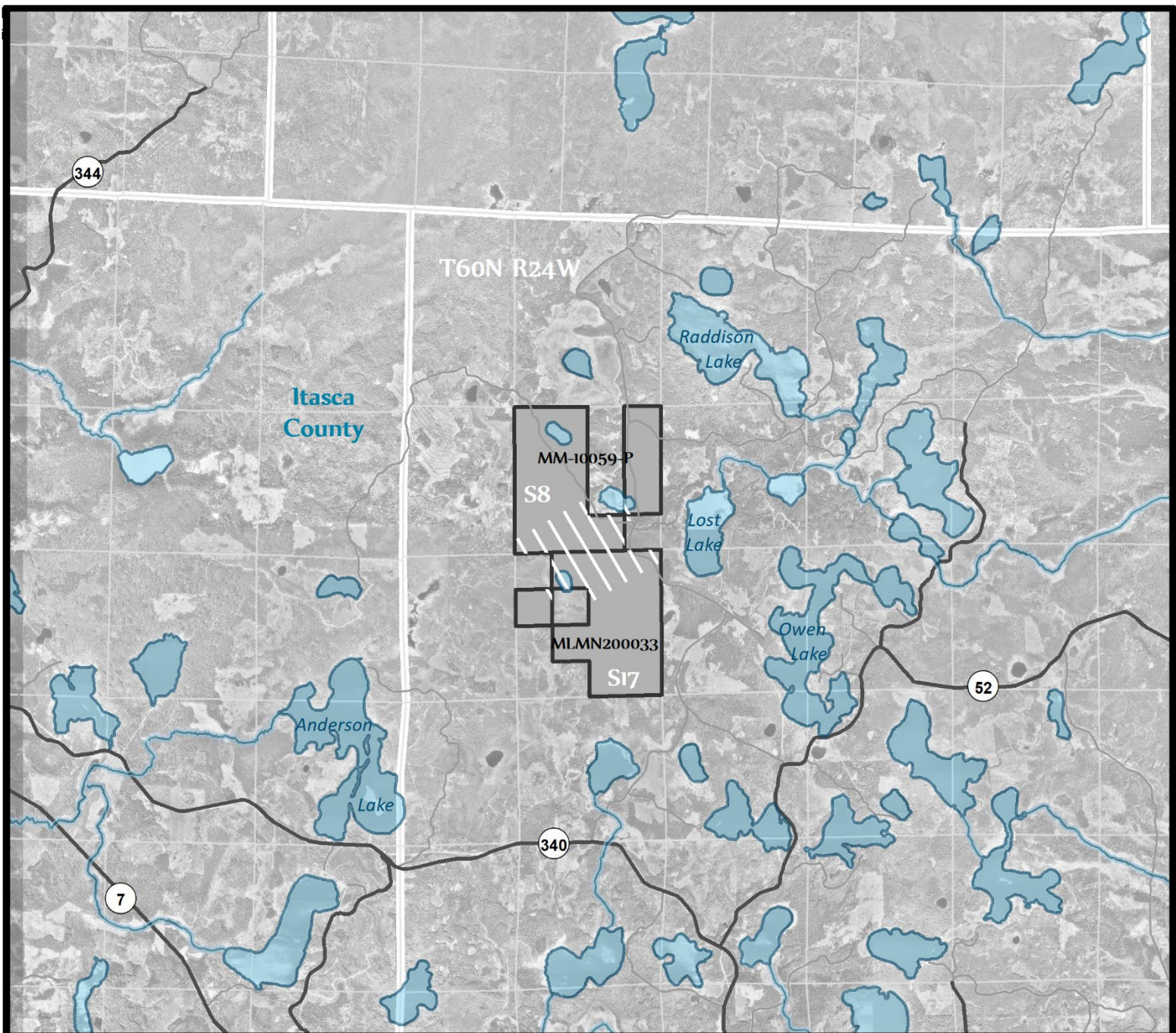
**Surface ownership:** Exploration may occur on DNR-owned lands, other publicly administered lands, or on private lands. VGI is responsible for gaining access to lands not administered by the DNR. Upon DNR approval, VGI may explore state-owned lands consistent with the exploration plan, any stipulations, and applicable laws and rules.

**Explorer contact:** Kate Lehmann, (612) 338-5584 or [kate@ncmvgeo.com](mailto:kate@ncmvgeo.com)





This report is posted on the [DNR's exploration plan webpage](#).

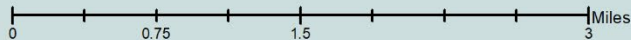
#### **Maps and Data Disclaimer**

The State of Minnesota makes no representations or warranties express or implied, with respect to the use of the information contained herein regardless of its format or the means of its transmission. There is no guarantee or representation to the user as to the accuracy, currency, suitability, completeness, usefulness, or reliability of this information for any purpose. The user accepts the information "as is." The State of Minnesota assumes no responsibility for loss or damage incurred as a result of any user's reliance on this information. All maps, reports, data, and other information contained herein are protected by copyright. Permission is granted to copy and use the materials herein for any lawful noncommercial purpose. Any user of this information agrees not to transmit or provide access to all or any part of this information to another party unless the user shall include with the information a copy of this disclaimer.



**Figure 1. DNR Overview Map of Exploration Plan**

-  State Nonferrous Metallic Mineral Leases
-  Planned Geophysical Exploration
-  State, County, Local, Pit, and Forest Roads
-  Public Waters



Environmental features intersecting leases with proposed exploration are shown.

This map is for reference purposes only. The State of Minnesota's land and mineral interests GIS data including lease boundaries is mapped at 40 acre Public Land Survey resolution.

GIS Data Sources - Exploration areas as provided by the Explorer. State minerals leases, public waters inventory, and PLS boundaries from DNR. Highways and roads from MnDOT. Aerial photography from Farm Service Agency.

**Exploration Plan Area**

