



Exploration Plan on State Nonferrous Metallic Minerals Leases

Submitted by Talon Nickel (USA) LLC on March 16, 2021 and summarized here by the DNR Division of Lands and Minerals

Exploration summary: Talon Nickel (USA) LLC (Talon) submitted a proposed plan to explore for metallic mineral deposits on leased state mineral rights about one half to five miles north of Tamarack, Minnesota in Aitkin County. Kennecott Exploration Company (Kennecott) and Talon have explored in this area since the early 2000s.

Talon's exploration plan proposes down-hole geophysical surveys and ground-based surveys at proposed and historic boring sites.

Talon plans to use the diamond core drilling method to drill exploratory borings in bedrock. The plan includes drilling the borings on 20 drill pads; Talon may drill multiple borings from each drill pad. Talon also proposes temporary access trails and plastic flotation mats to reach some drill sites safely. Talon proposes to seal the borings, following regulations set by the Department of Health.

Talon will conduct the bulk of ground-based surveys on foot. Where existing site conditions allow, Talon may use motorized vehicles to traverse the land. Talon will place signs when conducting geophysical surveys. Talon may need to cut small amounts of brush to place survey equipment; Talon will not cut lines or grids.

Upon DNR approval, Talon has the right to explore state-owned lands consistent with the exploration plan, any stipulations, and applicable laws and rules.

Find a summary report and associated map of the proposed exploration activities on the DNR's exploration plan webpage.

Exploration is proposed on the following State nonferrous metallic mineral leases: MM-9765-P, MM-9766-P, MM-9849-N, MM-10002-N, MM-10003-N, MM-10004-N, MM-10005-N, MM-10007-N, MM-10008-N, MM-10009-N, MM-10010-N, MM-10202-N, MM-10203-N, MM-10252-N, MM-10253-N, MLMB200003, and MLMN200029

Public Land Survey location: Sections 21, 22, 23, 26, 27, 28, 33, 34 and 35 of T49N R22W; and Sections 2, 3, 4, 9, 10, and 11 of T48N R22W

Types of exploration activity: Exploratory borings, ground and down-hole geophysics

Expected time period of activity: Upon approval through approximately April 15, 2022

Access: Talon will use public roads, forest roads, other existing access routes, and clear new access routes.

Surface ownership: Exploration may occur on DNR owned lands, other publicly administered lands, or on private lands. Talon is responsible for gaining access to lands not administered by the DNR. Upon DNR approval, which may include stipulations, exploration may proceed as described in the exploration plan on state-owned surface lands.

Explorer contact: Brian Goldner, (218) 768-3292 or Goldner@Talonmetals.com

This report is posted on the [DNR's exploration plan webpage](#).

Maps and Data Disclaimer

The State of Minnesota makes no representations or warranties express or implied, with respect to the use of the information contained herein regardless of its format or the means of its transmission. There is no guarantee or representation to the user as to the accuracy, currency, suitability, completeness, usefulness, or reliability of this information for any purpose. The user accepts the information "as is." The State of Minnesota assumes no responsibility for loss or damage incurred as a result of any user's reliance on this information. All maps, reports, data, and other information contained herein are protected by copyright. Permission is granted to copy and use the materials herein for any lawful noncommercial purpose. Any user of this information agrees not to transmit or provide access to all or any part of this information to another party unless the user shall include with the information a copy of this disclaimer.

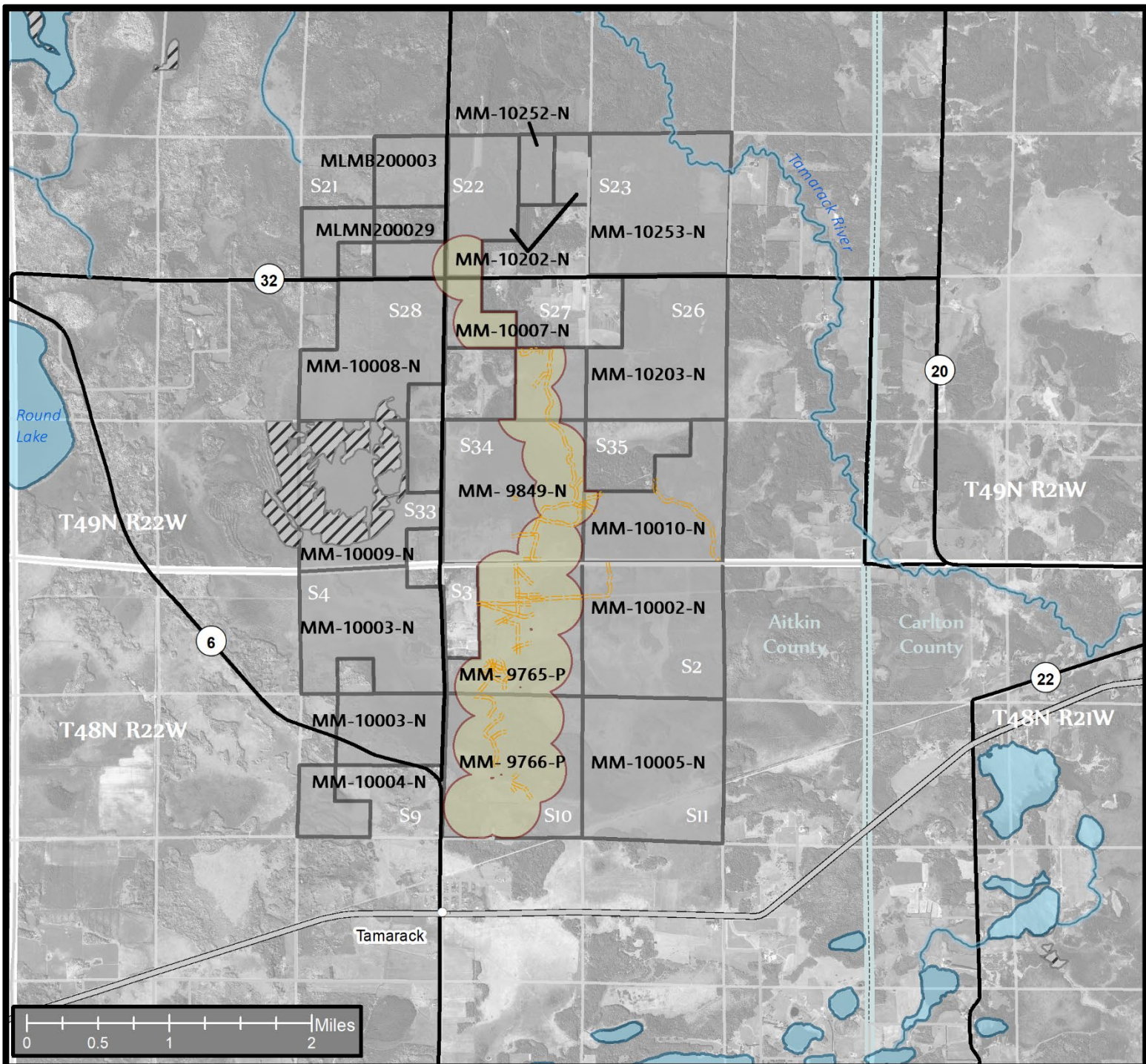








Figure 1. DNR Summary Map of Exploration Plan

-  Proposed Exploratory Boring Sites
-  State Nonferrous Metallic Mineral Leases
-  Native Plant Communities Potential S2
-  Public Waters

-  State, County, Local, Pit, and Forest Roads
-  Access Trails

This map is for reference purposes only. Environmental features intersecting proposed exploration leases are shown. The State of Minnesota's land and mineral interests including lease boundaries are mapped at 40 acre Public Land Survey resolution.

Data Sources: Exploration areas as described by the Explorer. State minerals leases, public waters inventory, special features, and PLS boundaries from DNR. Highways and roads from MnDOT. Aerial photography from Farm Service Agency.

