



# Exploration Plan on State Nonferrous Metallic Minerals Leases

Submitted by Teck American Incorporated, on March 1, 2021 and summarized here by the DNR Division of Lands and Minerals

**Exploration summary:** Teck American Incorporated (Teck) submitted a proposed exploration plan to continue exploration for metallic mineral deposits on leased state mineral rights in an area about five (5) miles southeast of Babbitt, Minnesota. Teck has drilled in this area of St. Louis County since 2007.

Teck's proposed exploration plan requests a one-year extension to complete exploration activities initially proposed in November 2019. Under the original 2019 exploration plan, Teck prepared new trails and drill sites for six of the eight drill sites. The proposal includes new access trails to reach a drill site at section 28 and the northern site at Section 36.

In the 2021 plan, Teck proposes to drill exploratory borings on three sites using the diamond core drilling method. In support of hydrologic explorations, Teck's new plan also includes drilling environmental holes on five sites using sonic, reverse circulation, air rotary, or diamond core methods. Any drilling in wetlands will occur in winter; drilling at upland sites may occur at various times throughout the year. All drilling activity, including sealing, will follow regulations set by the Department of Health.

**Exploration is proposed on the following State nonferrous metallic minerals leases:** MM-9831-N

**Public Land Survey location:** Part or all of Sections 28, 31 and 33 of T. 60 N., R. 12 W., and part or all of Section 36 of T. 60 N., R. 13 W.

**Types of exploration activity:** Exploratory borings and environmental drill holes

**Expected time period of activity:** Intermittently from April 2021 through March 2022

**Access:** Teck will access the leased lands by public roads, forest roads, and other existing access routes. Teck will prepare two new access routes on state land.

**Surface ownership:** Exploration is proposed on state-owned lands only. Teck may need to use existing routes on non-state lands to reach some exploration sites. The exploration plan states that surface owners will be notified for access to the property. Upon DNR approval, which may include stipulations, exploration may proceed as described in the exploration plan on state-owned surface lands.

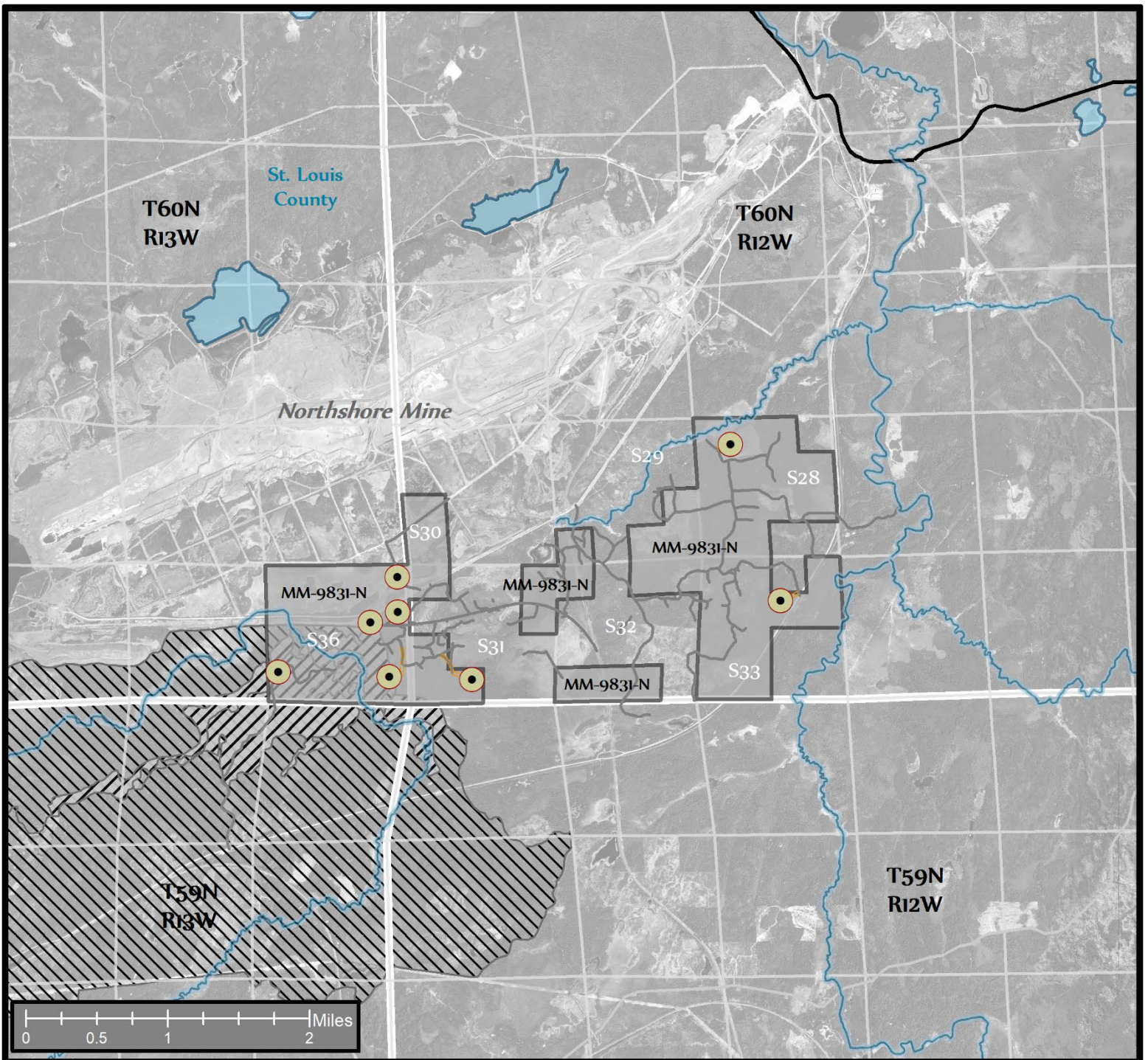
**Explorer contact:** Leslie Olmstead, (509) 623-4572 or [Leslie.Olmstead@teck.com](mailto:Leslie.Olmstead@teck.com)

This report is posted on the [DNR's exploration plan webpage](#).

Correction: This document is updated to reflect that the environmental hole proposed at one of the drill sites will be an exploratory boring instead. The result is the number of drill sites for exploratory borings increases from two to three and the number of drill sites for environmental wells decreases from six to five.

**Maps and Data Disclaimer**

The State of Minnesota makes no representations or warranties express or implied, with respect to the use of the information contained herein regardless of its format or the means of its transmission. There is no guarantee or representation to the user as to the accuracy, currency, suitability, completeness, usefulness, or reliability of this information for any purpose. The user accepts the information "as is." The State of Minnesota assumes no responsibility for loss or damage incurred as a result of any user's reliance on this information. All maps, reports, data, and other information contained herein are protected by copyright. Permission is granted to copy and use the materials herein for any lawful noncommercial purpose. Any user of this information agrees not to transmit or provide access to all or any part of this information to another party unless the user shall include with the information a copy of this disclaimer.



**Figure 1. DNR Summary Map of Exploration Plan**

- Proposed Exploratory and Environmental Boring Sites
- State Nonferrous Metallic Mineral Leases
- Native Plant Communities Potential S2
- MBS High Biodiversity Significance

- State, County, Local, Pit, and Forest Roads
- Access Trails
- Public Waters

*This map is for reference purposes only. Environmental features intersecting proposed exploration leases are shown. The State of Minnesota's land and mineral interests including lease boundaries are mapped at 40 acre Public Land Survey resolution.*

Data Sources: Exploration areas as described by the Explorer. State minerals leases, public waters inventory, special features, and PLS boundaries from DNR. Highways and roads from MnDOT. Aerial photography from Farm Service Agency.

