



Minerals Exploration Plan on State Nonferrous Metallic Minerals Leases

Submitted by Vermillion Gold Inc. on February 10, 2021 and summarized here by DNR Division of Lands and Minerals

Exploration summary: Vermillion Gold Inc. (VGI) submitted a proposed exploration plan to conduct a ground geophysical survey for metallic mineral deposits in St. Louis County. The exploration activities will occur on leased state mineral rights along a grid area between the cities of Virginia and Gilbert, Minnesota (Figure 1). VGI has explored for gold in this area since 2007.

The VGI exploration plan proposes to cut brush to a width of about three feet as needed for access to lands along the grid. VGI will conduct the bulk of the survey on foot and may use motorized vehicles where existing site conditions support the use of vehicles to traverse the land. VGI will place signs when conducting the geophysical survey.

Exploration is proposed on the following State nonferrous metallic minerals leases: MM-10180, MM10181, MM-10182, MM-10185, and MM-10372-N

Public Land Survey location: Part or all of Sections 14, 15, 16, and 22 of T58N R17W (Cities of Gilbert and Virginia) as shown on Figure 1

Types of exploration activity: Ground-based Induced Polarization geophysical survey (IP Survey)

Expected time period of activity: Upon authorization by DNR through April 2021

Access: VGI will access the leased lands by existing public and forest road network, and other existing access routes. The proposal does not include construction of new trails for motorized vehicles.

Surface ownership: Exploration may occur on DNR owned lands, other publicly administered lands, or on private lands. VGI is responsible for gaining access to lands not administered by the DNR. Upon DNR approval, which may include stipulations, exploration may proceed as described in the exploration plan on state-owned surface lands.

Explorer contact: Kate Lehmann, (612) 338-5584 or kate@ncmvgeo.com

This report is posted on the [DNR's exploration plan webpage](#).

Maps and Data Disclaimer

The State of Minnesota makes no representations or warranties express or implied, with respect to the use of the information contained herein regardless of its format or the means of its transmission. There is no guarantee or representation to the user as to the accuracy, currency, suitability, completeness, usefulness, or reliability of this information for any purpose. The user accepts the information "as is." The State of Minnesota assumes no responsibility for loss or damage incurred as a result of any user's reliance on this information. All maps, reports, data, and other information contained herein are protected by copyright. Permission is granted to copy and use the materials herein for any lawful noncommercial purpose. Any user of this information agrees not to transmit or provide access to all or any part of this information to another party unless the user shall include with the information a copy of this disclaimer.

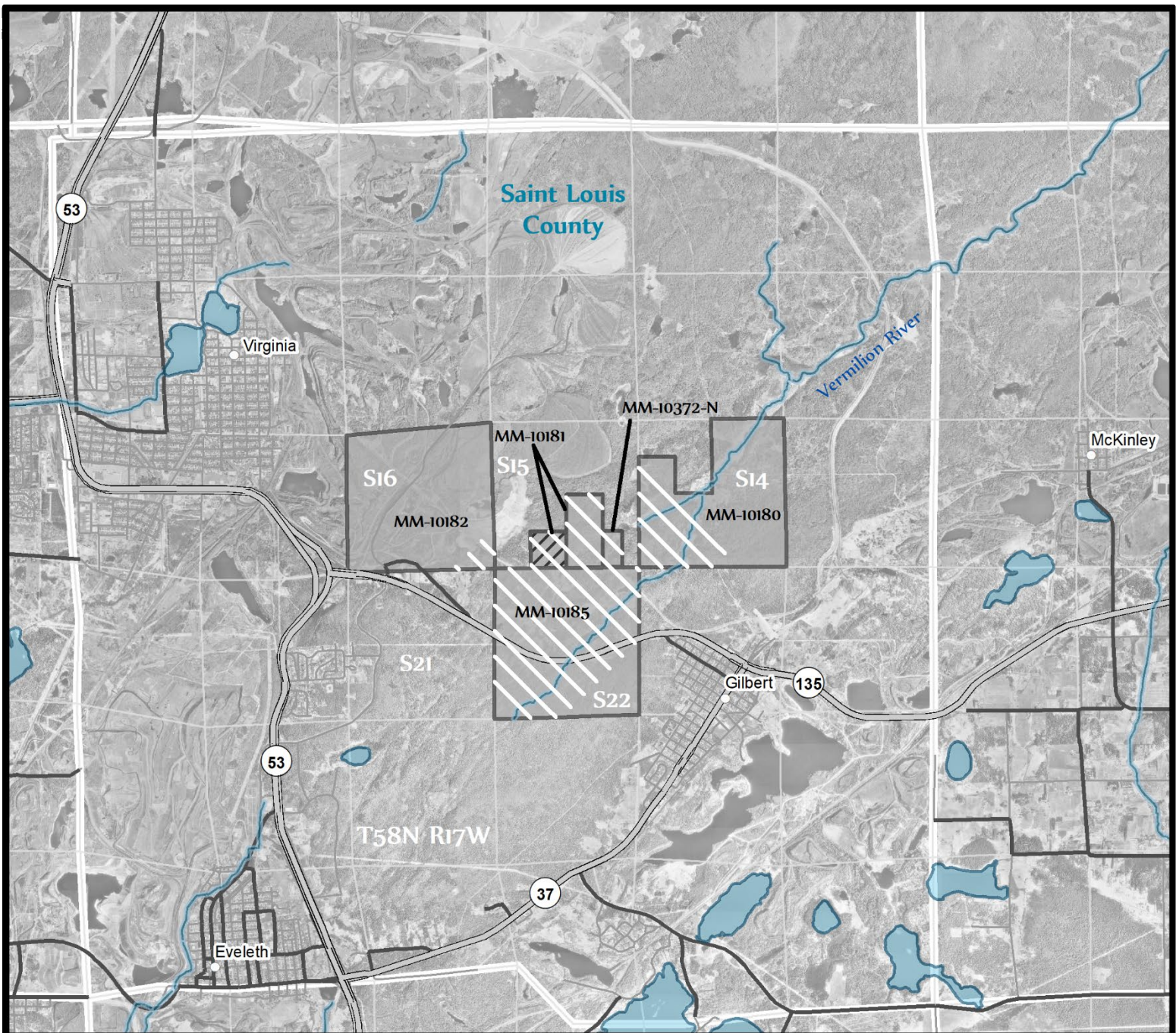







Figure 1. DNR Overview Map of Exploration Plan

-  State Nonferrous Metallic Mineral Leases
-  Limited lease acreage: railway right of way only
-  State, County, Local, Pit, and Forest Roads
-  Planned Geophysical Exploration
-  Public Waters

0 0.75 1.5 3 Miles

Environmental features intersecting leases with proposed exploration are shown.

This map is for reference purposes only. The State of Minnesota's land and mineral interests GIS data including lease boundaries is mapped at 40 acre Public Land Survey resolution.

GIS Data Sources - Exploration areas as provided by the Explorer. State minerals leases, public waters inventory, and PLS boundaries from DNR. Highways and roads from MnDOT. Aerial photography from Farm Service Agency.

Exploration Plan Area

