



Minerals Exploration Plan on State Nonferrous Metallic Minerals Leases

Submitted by Talon Nickel (USA) LLC on June 2, 2020 and summarized
here by DNR Division of Lands and Minerals

Narrative: Talon Nickel (USA) LLC (Talon) submitted a plan to continue exploration for metallic mineral deposits in Aitkin County. The exploration will occur about one to three miles north of Tamarack, Minnesota (Figure 1). Kennecott Exploration Company (Kennecott) and Talon have explored in this area since the early 2000's.

Talon plans to drill up to 12 exploratory borings at multiple sites using the diamond core drilling method. Results from drilling and geophysical surveys will be used to determine specific drill locations. Drilling activity, including sealing, will follow regulations set by the Department of Health.

Kennecott, which designated Talon as the operator for the proposed exploration activity, holds the state leases. The Minnesota Department of Natural Resources (DNR) has approved the operating agreement between Kennecott and Talon.

Exploration is proposed on the following State nonferrous metallic minerals leases: MM-9765-P, MM-9766-P, MM-9849-N, and MM-10010-N

Public Land Survey location: Part or all of Sections 34 and 35 of T49N R22W (Haugen Township) and part or all of Sections 3 and 10 of T48N R22W (Clark Township) as shown on Figure 1

Types of exploration activity: Diamond drilling

Expected time period of activity: Upon authorization by DNR through December 31, 2020

Access: Access to sites will be via the existing public and forest road network, and other existing access routes. New temporary trails from existing access routes are possible. Flotation mats may be placed as needed to enable safe access.

Surface ownership: Exploration may occur on DNR and County-administered state lands as well as on private lands. Work will not begin on private lands without the explicit permission of the landowner, according to the exploration plan. Upon DNR approval, which may include stipulations, exploration may proceed as described in the exploration plan on state-owned surface lands.

Explorer contact: Brian Goldner, (218) 768-3292 or goldner@talonmetals.com

This report is posted on the [DNR's exploration plan webpage](#).

Maps and Data Disclaimer

The State of Minnesota makes no representations or warranties express or implied, with respect to the use of the information contained herein regardless of its format or the means of its transmission. There is no guarantee or representation to the user as to the accuracy, currency, suitability, completeness, usefulness, or reliability of this information for any purpose. The user accepts the information "as is." The State of Minnesota assumes no responsibility for loss or damage incurred as a result of any user's reliance on this information. All maps, reports, data, and other information contained herein are protected by copyright. Permission is granted to copy and use the materials herein for any lawful noncommercial purpose. Any user of this information agrees not to transmit or provide access to all or any part of this information to another party unless the user shall include with the information a copy of this disclaimer.

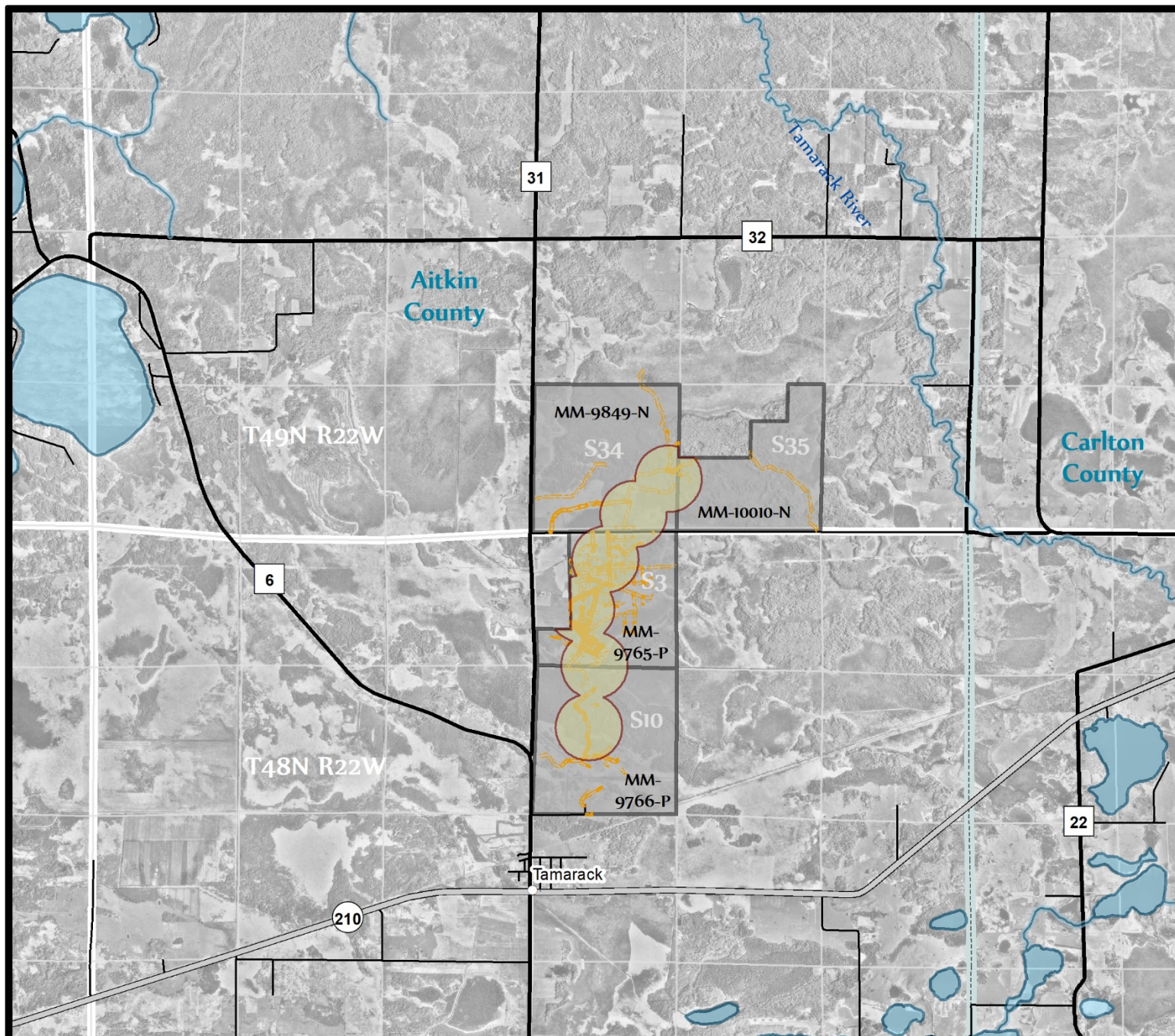
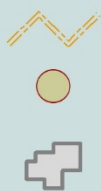


Figure 1. DNR Overview Map of Exploration Plan



Existing Access Trails
Proposed Exploratory
Boring Sites
State Nonferrous Metallic
Mineral Leases



Public Waters
State, County, Local, Pit,
and Forest Roads

0 0.75 1.5 3 Miles

No exclusion areas or special features occur within or bordering the leases proposed for exploration.

This map is for reference purposes only. The State of Minnesota's land and mineral interests GIS data including lease boundaries is mapped at 40 acre Public Land Survey resolution.

GIS Data Sources - Exploration areas as provided by the Explorer. State minerals leases, public waters inventory, and PLS boundaries from DNR. Highways and roads from MnDOT. Aerial photography from Farm Service Agency.

**Exploration
Plan Area**

