



Minerals Exploration Plan on State Nonferrous Metallic Minerals Leases

Submitted by Teck American Incorporated on December 10, 2020 and summarized here by DNR Division of Lands and Minerals

Exploration summary: Teck American Incorporated (Teck) submitted a proposed plan to continue exploration for metallic mineral deposits in St. Louis County, about five miles southeast of Babbitt, Minnesota. Teck has explored in this area since 2007.

Teck plans to drill environmental holes at two sites in support of hydrologic investigations. Drilling methods may include sonic, rotary, or reverse circulation and diamond core. Drilling activity in wetlands will occur in winter and follow regulations set by the Department of Health.

Wetlands may need to be crossed to reach the drill site; new temporary access trails across wetlands will be brushed and built on snow and ice. Upland sites with year-round access may be drilled other times of the year.

Teck indicates it will secure permits and authorizations for wetlands impacts, if applicable.

Exploration is proposed on the following State nonferrous metallic minerals leases: MM-9831-N

Public Land Survey location: Part of Sections 29, 30 and 31 of T60N R12W as shown on Figure 1

Types of exploration activity: Environmental drill holes

Expected time period of activity: intermittently from January 1, 2021 through December 2021

Access: Access to sites will be via the existing public and forest road network, and other existing access routes. Teck will construct new trails to each drill site. The new routes proposed are on state land.

Surface ownership: Exploration will occur on DNR-administered state lands. Upon DNR approval, which may include stipulations, exploration may proceed as described in the exploration plan on state-owned surface lands.

Explorer contact: Leslie Olmstead, (509) 623-4572 or Leslie.Olmstead@teck.com

This report is posted on the [DNR's exploration plan webpage](#).

Maps and Data Disclaimer

The State of Minnesota makes no representations or warranties express or implied, with respect to the use of the information contained herein regardless of its format or the means of its transmission. There is no guarantee or representation to the user as to the accuracy, currency, suitability, completeness, usefulness, or reliability of this information for any purpose. The user accepts the information "as is." The State of Minnesota assumes no responsibility for loss or damage incurred as a result of any user's reliance on this information. All maps, reports, data, and other information contained herein are protected by copyright. Permission is granted to copy and use the materials herein for any lawful noncommercial purpose. Any user of this information agrees not to transmit or provide access to all or any part of this information to another party unless the user shall include with the information a copy of this disclaimer.

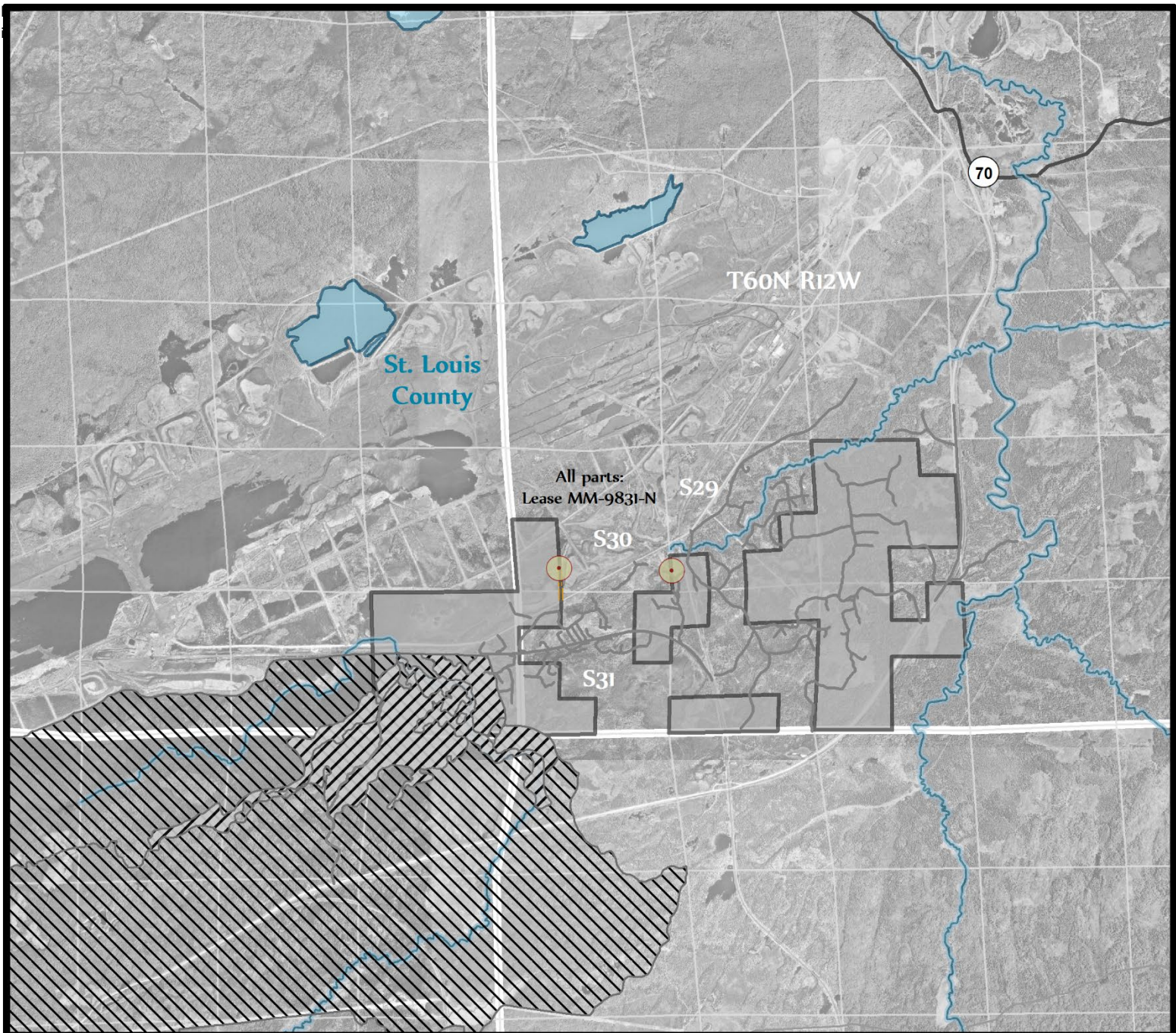








Figure 1. DNR Overview Map of Exploration Plan

-  State Nonferrous Metallic Mineral Leases
-  Native Plant Communities Potential S2
-  MBS High Biodiversity Significance
-  State, County, Local, Pit, and Forest Roads
-  Public Waters
-  Proposed Exploratory Boring Sites & Access Trails

0 0.75 1.5 3 Miles

Environmental features intersecting leases with proposed exploration are shown.

This map is for reference purposes only. The State of Minnesota's land and mineral interests GIS data including lease boundaries is mapped at 40 acre Public Land Survey resolution.

GIS Data Sources - Exploration areas as provided by the Explorer. State minerals leases, public waters inventory, and PLS boundaries from DNR. Highways and roads from MnDOT. Aerial photography from Farm Service Agency.

