



Minerals Exploration Plan on State Nonferrous Metallic Minerals Leases

Submitted by [Vermillion Gold Inc. \(VGI\)](#) on November 24, 2020 and summarized here by [DNR Division of Lands and Minerals](#)

Exploration summary: Vermillion Gold Inc. (VGI) submitted a plan to resume exploration for metallic mineral deposits in Itasca County. Exploration will occur on leased state mineral rights in an area about 11 miles southeast of Big Fork, Minnesota. The last time VGI explored for gold in this area was 2010.

VGI plans to drill seven exploratory borings using the rotosonic drilling method. Rotosonic drilling uses high frequency vibration of the drill bit to advance and collect cores of soils, glacial sediments, and a short length of the underlying bedrock. The borings end shortly after the top of bedrock is encountered. Drilling activity, including sealing, will follow regulations set by the Minnesota Department of Health. All drilling will occur this winter.

Exploration is proposed on the following State nonferrous metallic minerals leases: MLMN200033, MM-10059-P, and MM10060-P.

Public Land Survey location: Part or all of Sections 8, 9 and 17 of T60N R24W as shown on Figure 1.

Types of exploration activity: Rotosonic drilling

Expected time period of activity: Upon authorization by DNR through February 28, 2021

Access: Access to sites will be via the existing public and forest road network, and other existing access routes. New temporary trails from existing access routes are planned for some sites.

Surface ownership: Exploration or access to exploration sites may occur on DNR and County-administered state lands as well as on private lands. The company will consult with the Itasca County Land Department and private land owners for access as needed. Upon DNR approval, which may include stipulations, exploration may proceed as described in the exploration plan on state-owned surface lands.

Explorer contact: Kate Lehmann, (612) 338-5584 or kate@ncmvgeo.com

This report is posted on the [DNR's exploration plan webpage](#).

Maps and Data Disclaimer

The State of Minnesota makes no representations or warranties express or implied, with respect to the use of the information contained herein regardless of its format or the means of its transmission. There is no guarantee or representation to the user as to the accuracy, currency, suitability, completeness, usefulness, or reliability of this information for any purpose. The user accepts the information "as is." The State of Minnesota assumes no responsibility for loss or damage incurred as a result of any user's reliance on this information. All maps, reports, data, and other information contained herein are protected by copyright. Permission is granted to copy and use the materials herein for any lawful noncommercial purpose. Any user of this information agrees not to transmit or provide access to all or any part of this information to another party unless the user shall include with the information a copy of this disclaimer.

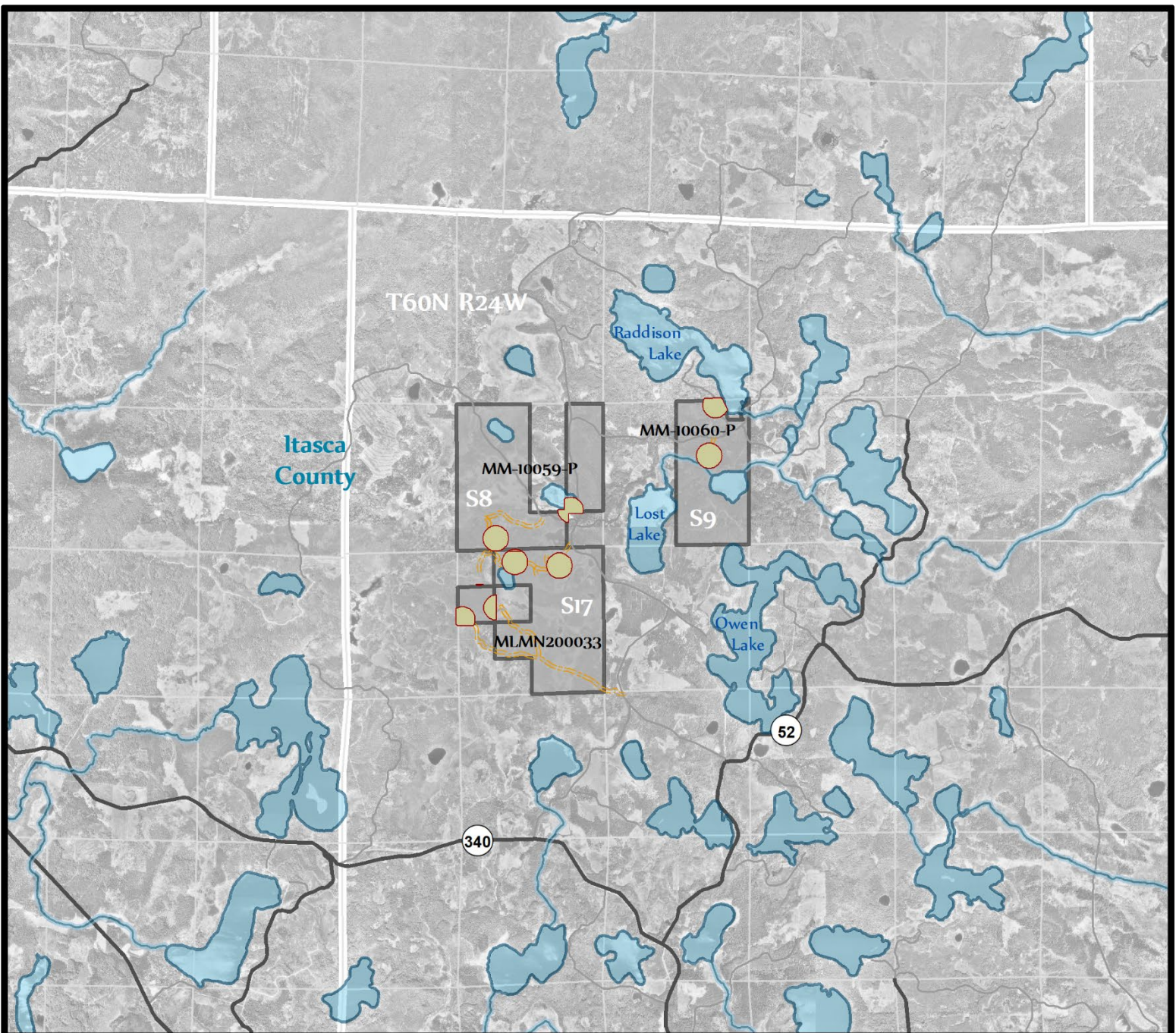





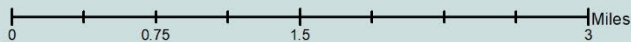


Figure 1. DNR Overview Map of Exploration Plan

-  State Nonferrous Metallic Mineral Leases
-  Access Trails
-  Proposed Exploratory Boring Sites
-  State, County, Local, Pit, and Forest Roads
-  Public Waters



Environmental features intersecting leases with proposed exploration are shown.

This map is for reference purposes only. The State of Minnesota's land and mineral interests GIS data including lease boundaries is mapped at 40 acre Public Land Survey resolution.

GIS Data Sources - Exploration areas as provided by the Explorer. State minerals leases, public waters inventory, and PLS boundaries from DNR. Highways and roads from MnDOT. Aerial photography from Farm Service Agency.

Exploration Plan Area

