



# Minerals Exploration Plan on State Nonferrous Metallic Minerals Leases

Submitted by Vermillion Gold Inc. on October 9, 2020 and summarized  
here by DNR Division of Lands and Minerals

**Narrative:** Vermillion Gold Inc. (VGI) submitted a plan to continue exploration for metallic mineral deposits in St. Louis County. Exploration will occur on leased state mineral rights in an area between the cities of Virginia and Gilbert, Minnesota (Figure 1). VGI has explored for gold in this area since 2007.

VGI plans to map geological features and sample soils. VGI will access sampling locations on foot, where motorized vehicles are not supported and accessible. Soil samples will be collected on uplands using hand tools. Wetland will not be sampled.

**Exploration is proposed on the following State nonferrous metallic minerals leases:** MM-10180, MM10181, MM-10182, MM-10185, and MM-10372-N.

**Public Land Survey location:** Part or all of Sections 14, 15, 16, and 22 of T58N R17W (Cities of Gilbert and Virginia) as shown on Figure 1

**Types of exploration activity:** Geologic mapping and soil sampling.

**Expected time period of activity:** Upon authorization by DNR and intermittently through October 31, 2021

**Access:** Access to leased lands will be via the existing public and forest road network, and other existing access routes. No new trails or site clearance is proposed.

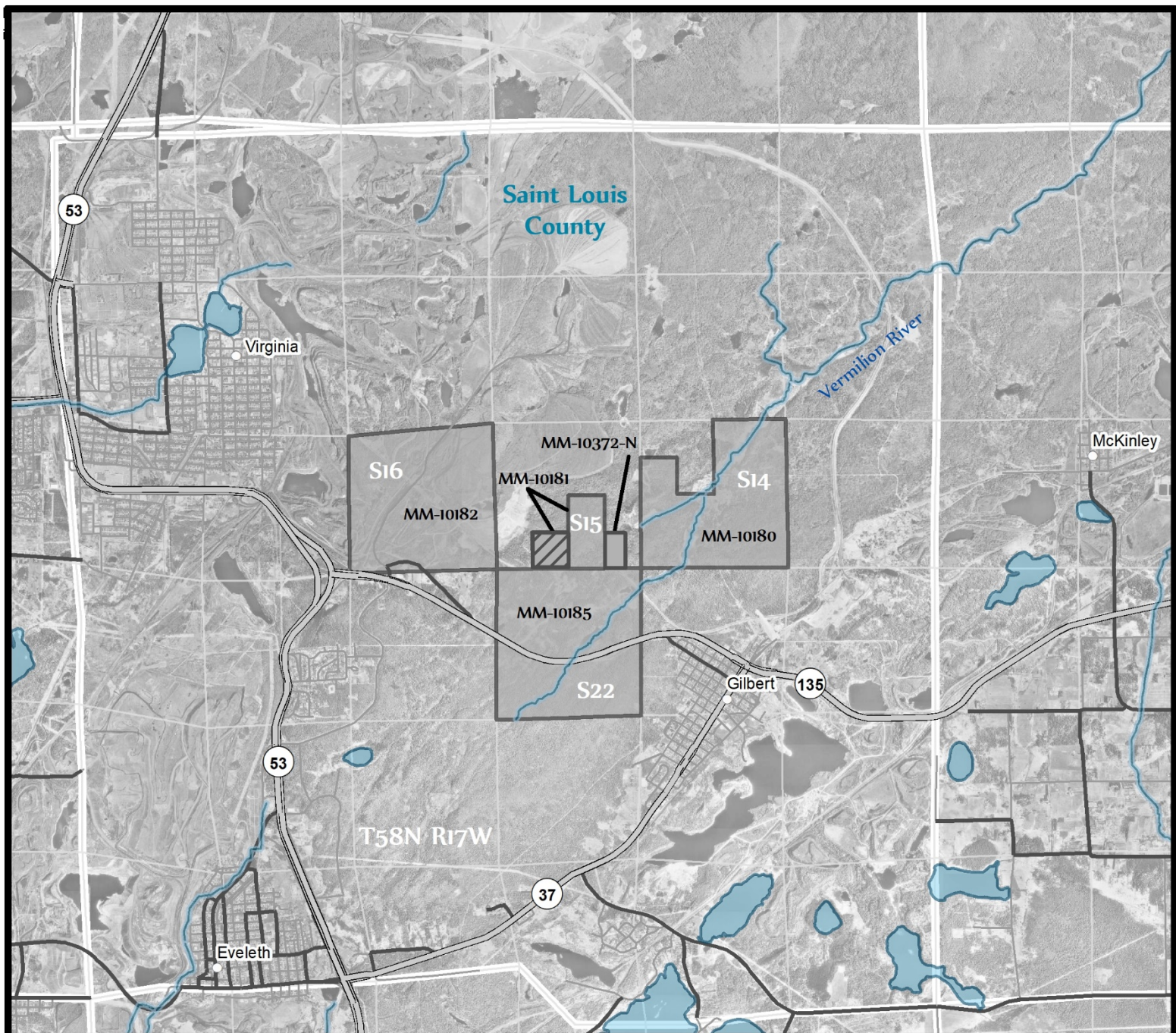
**Surface ownership:** Exploration may occur on DNR and other publicly-administered state lands as well as on private lands. Work will not begin on private lands without the explicit permission of the landowner, according to the company. Upon DNR approval, which may include stipulations, exploration may proceed as described in the exploration plan on state-owned surface lands.

**Explorer contact:** Kate Lehmann, (612) 338-5584 or [kate@ncmvgeo.com](mailto:kate@ncmvgeo.com)

This report is posted on the [DNR's exploration plan webpage](#).

**Maps and Data Disclaimer**

The State of Minnesota makes no representations or warranties express or implied, with respect to the use of the information contained herein regardless of its format or the means of its transmission. There is no guarantee or representation to the user as to the accuracy, currency, suitability, completeness, usefulness, or reliability of this information for any purpose. The user accepts the information "as is." The State of Minnesota assumes no responsibility for loss or damage incurred as a result of any user's reliance on this information. All maps, reports, data, and other information contained herein are protected by copyright. Permission is granted to copy and use the materials herein for any lawful noncommercial purpose. Any user of this information agrees not to transmit or provide access to all or any part of this information to another party unless the user shall include with the information a copy of this disclaimer.



**Figure 1. DNR Overview Map of Exploration Plan**



State Nonferrous Metallic Mineral Leases



Limited lease acreage: railway right of way only



State, County, Local, Pit, and Forest Roads



Public Waters

0 0.75 1.5 3 Miles

Environmental features intersecting leases with proposed exploration are shown.

This map is for reference purposes only. The State of Minnesota's land and mineral interests GIS data including lease boundaries is mapped at 40 acre Public Land Survey resolution.

GIS Data Sources - Exploration areas as provided by the Explorer. State minerals leases, public waters inventory, and PLS boundaries from DNR. Highways and roads from MnDOT. Aerial photography from Farm Service Agency.

**Exploration Plan Area**

