



Minerals Exploration Plan on State Nonferrous Metallic Minerals Leases

Submitted by Teck American Incorporated on June 12, 2020 and summarized here by DNR Division of Lands and Minerals

Narrative: Teck American Incorporated (Teck) submitted a plan to facilitate exploration for metallic mineral deposits in St. Louis County. The proposed work would occur about five miles southeast of Babbitt, Minnesota. Teck has actively explored in this area since 2007.

Teck plans to upgrade an existing winter access trail to support all-season access for exploration. Upgrades may include widening the access trail, making slight realignments of the existing winter trail, and adding gravel. Teck also plans to construct an at-grade railroad crossing across a private railroad. These actions will ensure all-season access to Teck's lease holdings.

Teck indicates it will secure permits and authorizations for stormwater and wetlands impacts, as applicable.

No drilling is proposed.

Exploration is proposed on the following State nonferrous metallic minerals leases: MM-9831-N

Public Land Survey location: Part of Sections 28, 29 and 33 of T60N R12W as shown on Figure 1

Types of exploration activity: Construction of all season access

Expected time period of activity: August 1 through December 31, 2020

Access: Access to sites will be via the existing public and forest road network, and other existing access routes.

Surface ownership: Exploration related activities will occur on DNR-administered state lands. Upon DNR approval, which may include stipulations, work may proceed as described in the exploration plan on state-owned surface lands.

Explorer contact: Leslie Olmstead, (509) 623-4572 or Leslie.Olmstead@teck.com

This report is posted on the [DNR's exploration plan webpage](#).

Maps and Data Disclaimer

The State of Minnesota makes no representations or warranties express or implied, with respect to the use of the information contained herein regardless of its format or the means of its transmission. There is no guarantee or representation to the user as to the accuracy, currency, suitability, completeness, usefulness, or reliability of this information for any purpose. The user accepts the information "as is." The State of Minnesota assumes no responsibility for loss or damage incurred as a result of any user's reliance on this information. All maps, reports, data, and other information contained herein are protected by copyright. Permission is granted to copy and use the materials herein for any lawful noncommercial purpose. Any user of this information agrees not to transmit or provide access to all or any part of this information to another party unless the user shall include with the information a copy of this disclaimer.

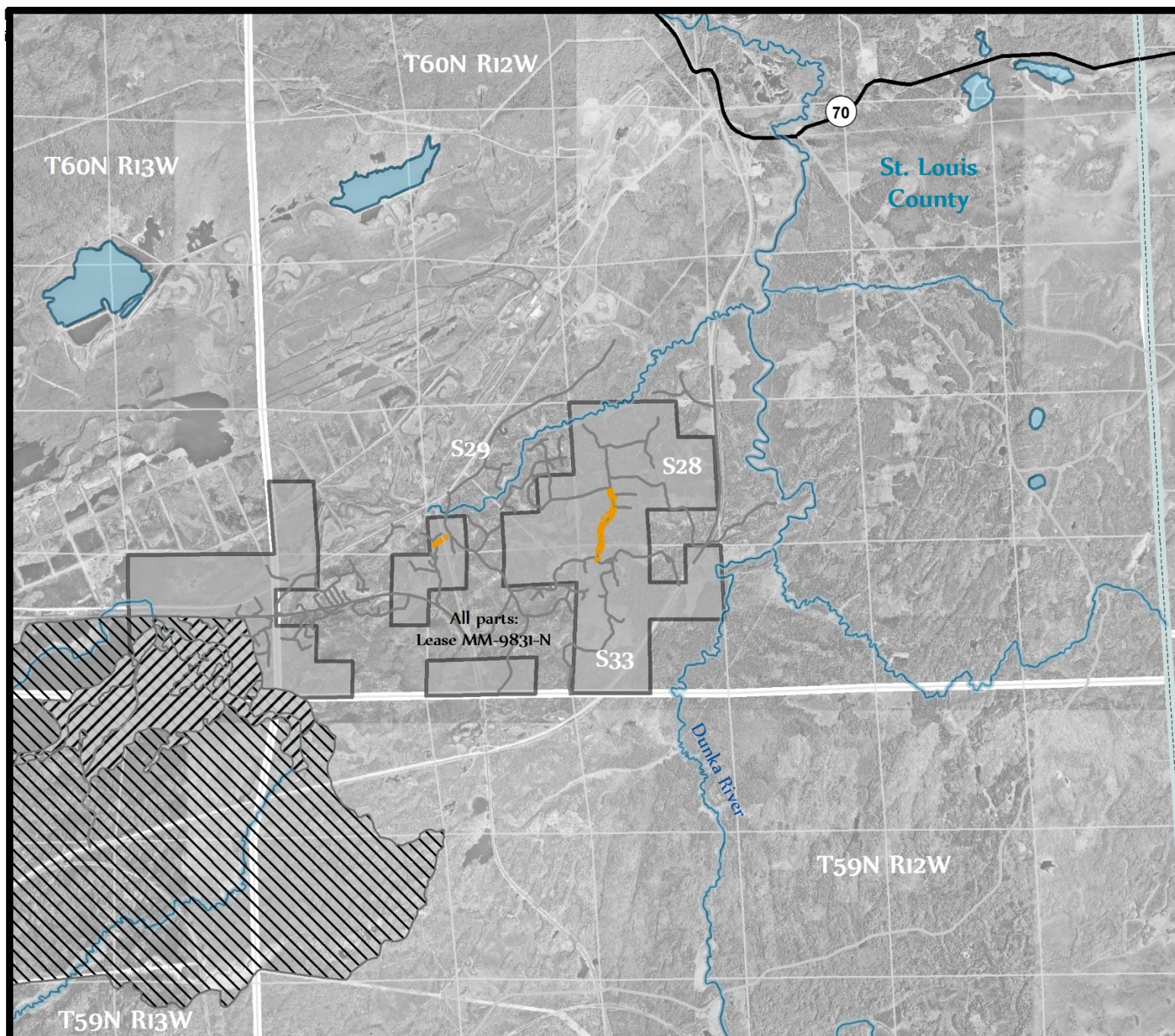








Figure 1. DNR Overview Map of Exploration Plan

-  State Nonferrous Metallic Mineral Leases
-  Native Plant Communities Potential S2
-  MBS High Biodiversity Significance

-  State, County, Local, Pit, and Forest Roads
-  Proposed Access Routes
-  Public Waters

0 0.75 1.5 3 Miles

Environmental features intersecting leases with proposed exploration are shown.

This map is for reference purposes only. The State of Minnesota's land and mineral interests GIS data including lease boundaries is mapped at 40 acre Public Land Survey resolution.

GIS Data Sources - Exploration areas as provided by the Explorer. State minerals leases, public waters inventory, and PLS boundaries from DNR. Highways and roads from MnDOT. Aerial photography from Farm Service Agency.

