



Minerals Exploration Plan on State Nonferrous Metallic Minerals Leases

Submitted by Talon Nickel (USA) LLC on May 15, 2020 and summarized here by DNR Division of Lands and Minerals

Narrative: Talon Nickel (USA) LLC (Talon) proposes to continue exploration for metallic mineral deposits in Aitkin County in an area extending from about ½ mile south-southeast to about 5 miles north-northeast of Tamarack, Minnesota (Figure 1). Kennecott Exploration Company (Kennecott) and now Talon have explored in this area since the early 2000's.

Talon plans to do ground and down-hole geophysical work. Down-hole geophysical work will occur in select existing borings that are temporarily sealed. If any of these borings are found to be blocked at depth, a drill rig will be used to clear the blockage before inserting the geophysical probes.

Kennecott holds the state leases and has designated Talon as the operator for the exploration activity proposed. DNR has approved the operating agreement between Kennecott and Talon.

Exploration is proposed on the following State nonferrous metallic minerals leases: MM-9765-P, MM-9766-P, MM-9767-P, MM-9768-P, MM-9849-N, MM-10002-N, MM-10005-N, MM-10007-N, MM-10008-N, MM-10010-N, MM-10202-N, MM-10203-N, and MM-10253-N

Public Land Survey location: Sections 22, 23, 26, 27, 28, 34 and 35 of T49N R22W (Haugen Township); Sections 2, 3, 10, 11, 14 and 15 of T48N R22W (Clark Township)

Types of exploration activity: Down-hole and ground geophysics

Expected time period of activity: Upon authorization by DNR through April 15, 2021

Access: The operator will use public roads, forest roads, other existing access routes, and existing drill sites. No new access routes are proposed. Geophysical equipment will be transported by foot where there is no existing access. Plastic flotation mats may be placed as needed to enable safe access.

Surface ownership: Exploration may occur on DNR and County-administered state lands as well as on private lands. Work will not begin on private lands without the explicit permission of the landowner, according to the exploration plan. Upon DNR approval, which may include stipulations, the operator may proceed as described in the exploration plan on state-owned surface lands.

Explorer contact: Brian Goldner, (218) 768-3292 or goldner@talonmetals.com

This report is posted on the [DNR's exploration plan webpage](#).

Maps and Data Disclaimer

The State of Minnesota makes no representations or warranties express or implied, with respect to the use of the information contained herein regardless of its format or the means of its transmission. There is no guarantee or representation to the user as to the accuracy, currency, suitability, completeness, usefulness, or reliability of this information for any purpose. The user accepts the information "as is." The State of Minnesota assumes no responsibility for loss or damage incurred as a result of any user's reliance on this information. All maps, reports, data, and other information contained herein are protected by copyright. Permission is granted to copy and use the materials herein for any lawful noncommercial purpose. Any user of this information agrees not to transmit or provide access to all or any part of this information to another party unless the user shall include with the information a copy of this disclaimer.

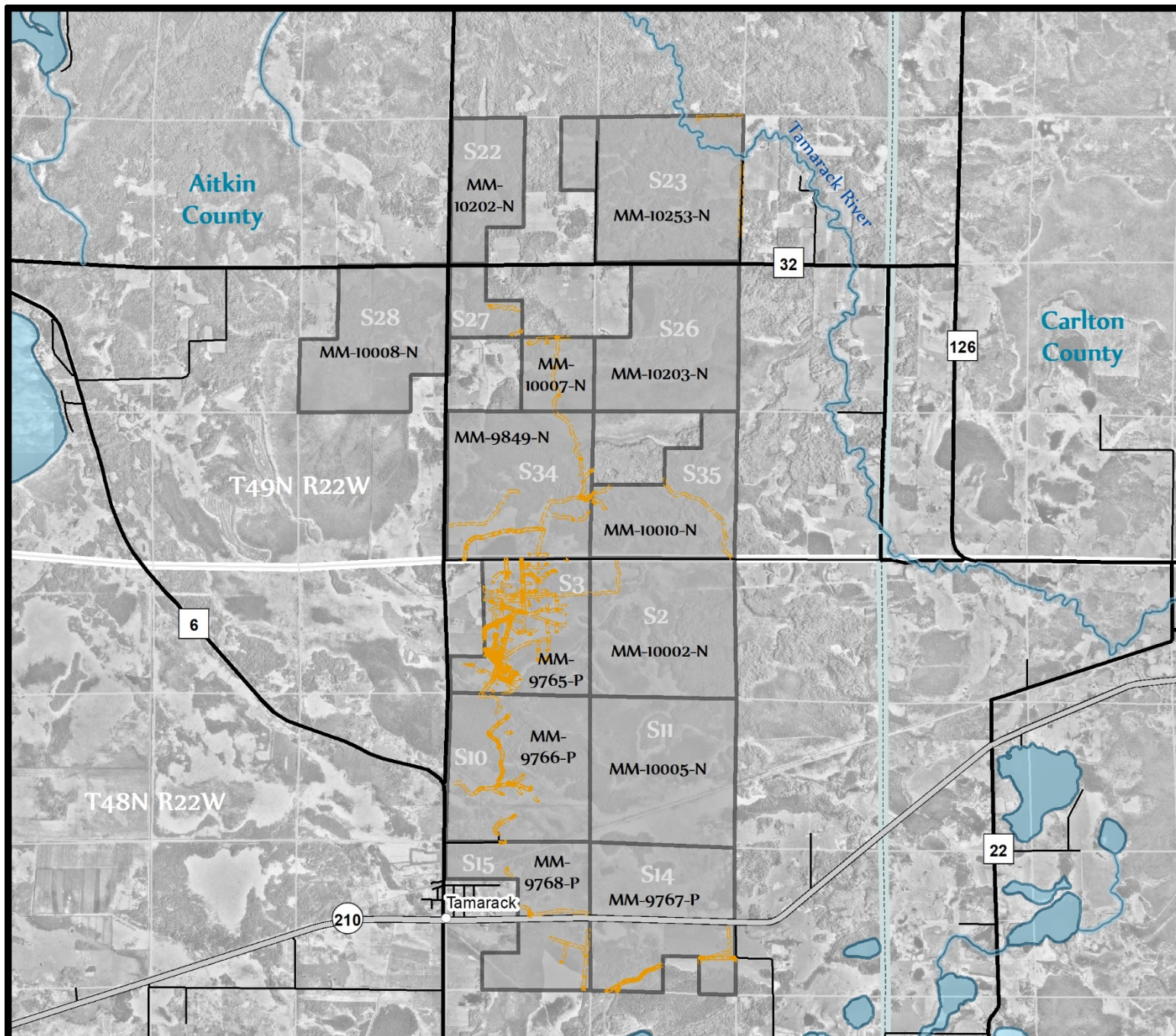


Figure 1. DNR Overview Map of Exploration Plan



Existing Access Trails



Public Waters



State Nonferrous Metallic Mineral Leases



State, County, Local, Pit, and Forest Roads

0 0.75 1.5 3 Miles

No exclusion areas or special features occur within or bordering the leases proposed for exploration.

This map is for reference purposes only. The State of Minnesota's land and mineral interests GIS data including lease boundaries is mapped at 40 acre Public Land Survey resolution.

GIS Data Sources - Exploration areas as provided by the Explorer. State minerals leases, public waters inventory, and PLS boundaries from DNR. Highways and roads from MnDOT. Aerial photography from Farm Service Agency.

Exploration Plan Area

