



Minerals Exploration Plan on State Nonferrous Metallic Minerals Leases

Submitted by Twin Metals Minnesota on January 15, 2019 and summarized here by the DNR Division of Lands and Minerals

Narrative: Twin Metals Minnesota (TMM) proposes to explore for metallic mineral deposits in Lake and Saint Louis Counties, Minnesota in areas about five miles east of Babbitt and eight miles southeast of Ely, Minnesota (Figure 1). TMM proposes to establish 6 new drill pads upon which monitoring wells will be installed. Each drill pad will be about 75 feet by 75 feet in size. The plan indicates that wells will not exceed 200 feet in depth. TMM states that water discharged from the wells will be captured, tested and, if warranted, disposed of at a Publically Owned Treatment Works or a licensed treatment/disposal facility.

Exploration is proposed on the following State nonferrous metallic minerals leases: MM-9755-P, MM-9756-P, MM-9764-N, and MM-9722-N.

Public Land Survey location: Sections 3 and 4 of T61N R11W; Section 34 of T62N R11W, and Section 36 of T61N R12W.

Types of exploration activity: Install monitoring wells and then conduct aquifer tests and collect routine water levels and water samples.

Expected time period of activity: Construction and installation may commence on approval and will be completed in 2019. Monitoring and maintenance will continue beyond 2019.

Access: The proposed drill pads are adjacent to state forest access roads and existing access trails. TMM does not propose new roads or trails.

Surface ownership: Upon DNR approval, which may include stipulations, TMM will have the right to explore as described in the exploration plan on state-owned surface lands. Where applicable, TMM will have the right to explore on other lands covered by state mineral leases upon gaining access.

Explorer contact: Dean DeBeltz, (651) 842-6800 or ddebeltz@twin-metals.com

This report is posted on the [DNR's exploration plan webpage](#).

Maps and Data Disclaimer

The State of Minnesota makes no representations or warranties express or implied, with respect to the use of the information contained herein regardless of its format or the means of its transmission. There is no guarantee or representation to the user as to the accuracy, currency, suitability, completeness, usefulness, or reliability of this information for any purpose. The user accepts the information "as is." The State of Minnesota assumes no responsibility for loss or damage incurred as a result of any user's reliance on this information. All maps, reports, data, and other information contained herein are protected by copyright. Permission is granted to copy and use the materials herein for any lawful noncommercial purpose. Any user of this information agrees not to transmit or provide access to all or any part of this information to another party unless the user shall include with the information a copy of this disclaimer.

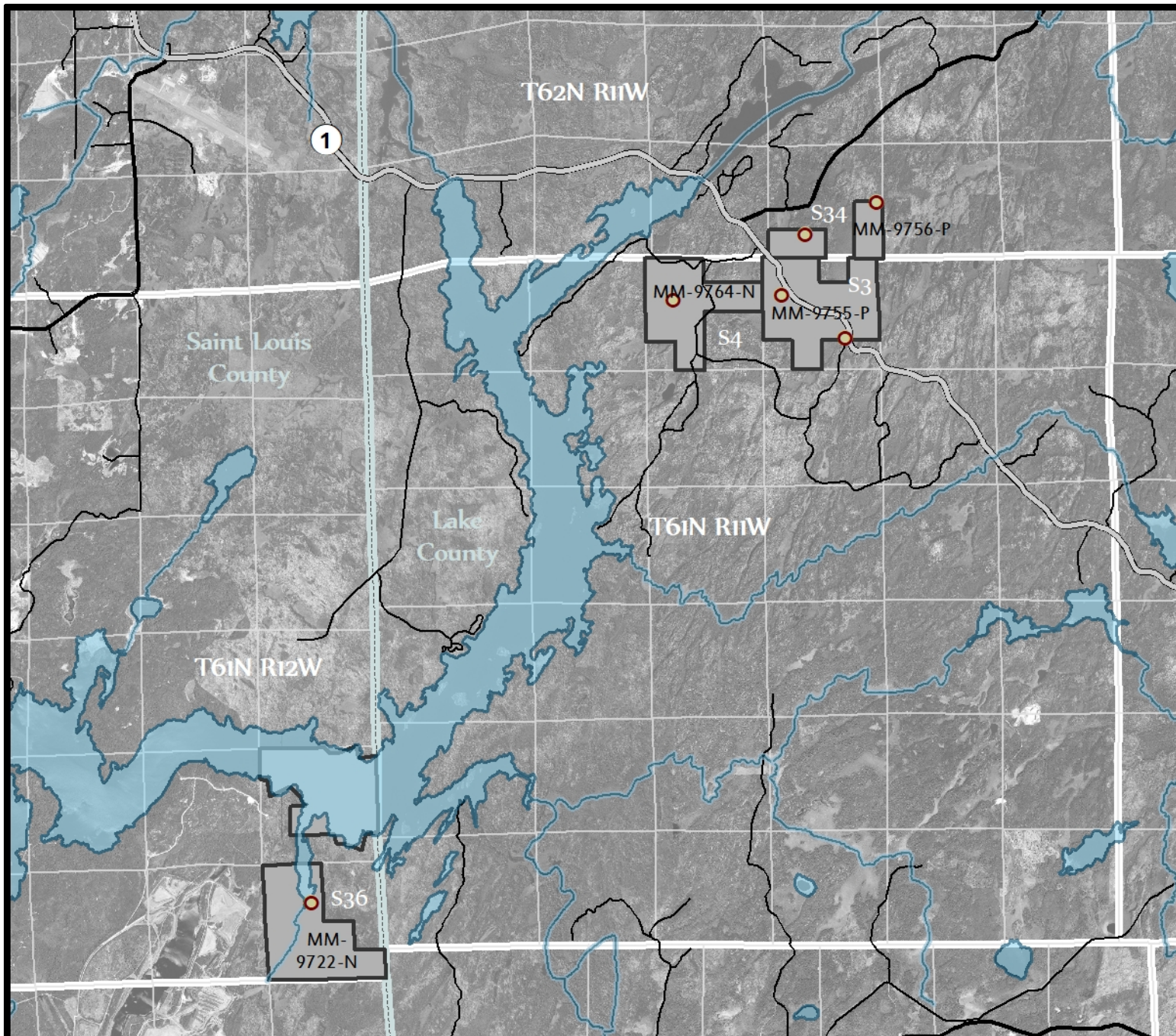


Figure 1. DNR Overview Map of Exploration Plan

