



Exploration Plan on State Nonferrous Metallic Minerals Leases

Submitted by Talon Nickel USA LLC, on November 22, 2019 and summarized here by the DNR Division of Lands and Minerals

Narrative: Talon Nickel USA LLC (Talon) proposes to explore for metallic mineral deposits in Aitkin County in an area extending from about ½ mile north-northeast to about 3.5 miles north-northeast of Tamarack, Minnesota (Figure 1). Talon plans to drill exploratory borings in bedrock at four sites using the diamond core drilling method. The borings will be drilled and then temporarily or permanently sealed following regulations set by the Department of Health. Talon, based on exploration results, may add or move drill sites within the designated leases up to 1200 feet from the sites depicted in Figure 1. Kennecott Exploration Company, the lessee of the state leases, has designated Talon as the operator for the exploration proposed. The DNR has approved the operating agreement between Kennecott Exploration Company and Talon.

State nonferrous metallic mineral lease ids: Exploration is proposed on 8 leases: MM-9765-P, MM-9766-P, MM-9767-P, MM-9768-P, MM-9849-N, MM-10002-N, MM-10005-N, MM-10010-N.

Public Land Survey location: Sections 34 and 35 of T49N R22W (Haugen Township); and Sections 2, 3, 10, 11, 14 and 15 of T48N R22W (Clark Township).

Types of exploration activity: Exploratory borings (diamond core drilling), and down-hole geophysical surveys.

Expected time period of activity: Upon authorization by DNR through approximately April 15, 2020.

Access: The operator will use public roads, forest roads, and other existing access routes and existing drill sites. Where existing access to new drill sites does not exist, one will be cleared. Temporary matting may be placed as needed for safety purposes.

Surface ownership: Exploration may occur on County and DNR-administered lands and private lands. The exploration plan states that work will not begin on private lands without the explicit permission of the landowner. Upon DNR approval, which may include stipulations, the operator may proceed as described in the exploration plan on state-owned surface lands.

Explorer contact: Brian Goldner, (218) 768-3292 or goldner@talonmetals.com

This report is posted on the [DNR's exploration plan webpage](#).

Maps and Data Disclaimer

The State of Minnesota makes no representations or warranties express or implied, with respect to the use of the information contained herein regardless of its format or the means of its transmission. There is no guarantee or representation to the user as to the accuracy, currency, suitability, completeness, usefulness, or reliability of this information for any purpose. The user accepts the information "as is." The State of Minnesota assumes no responsibility for loss or damage incurred as a result of any user's reliance on this information. All maps, reports, data, and other information contained herein are protected by copyright. Permission is granted to copy and use the materials herein for any lawful noncommercial purpose. Any user of this information agrees not to transmit or provide access to all or any part of this information to another party unless the user shall include with the information a copy of this disclaimer.

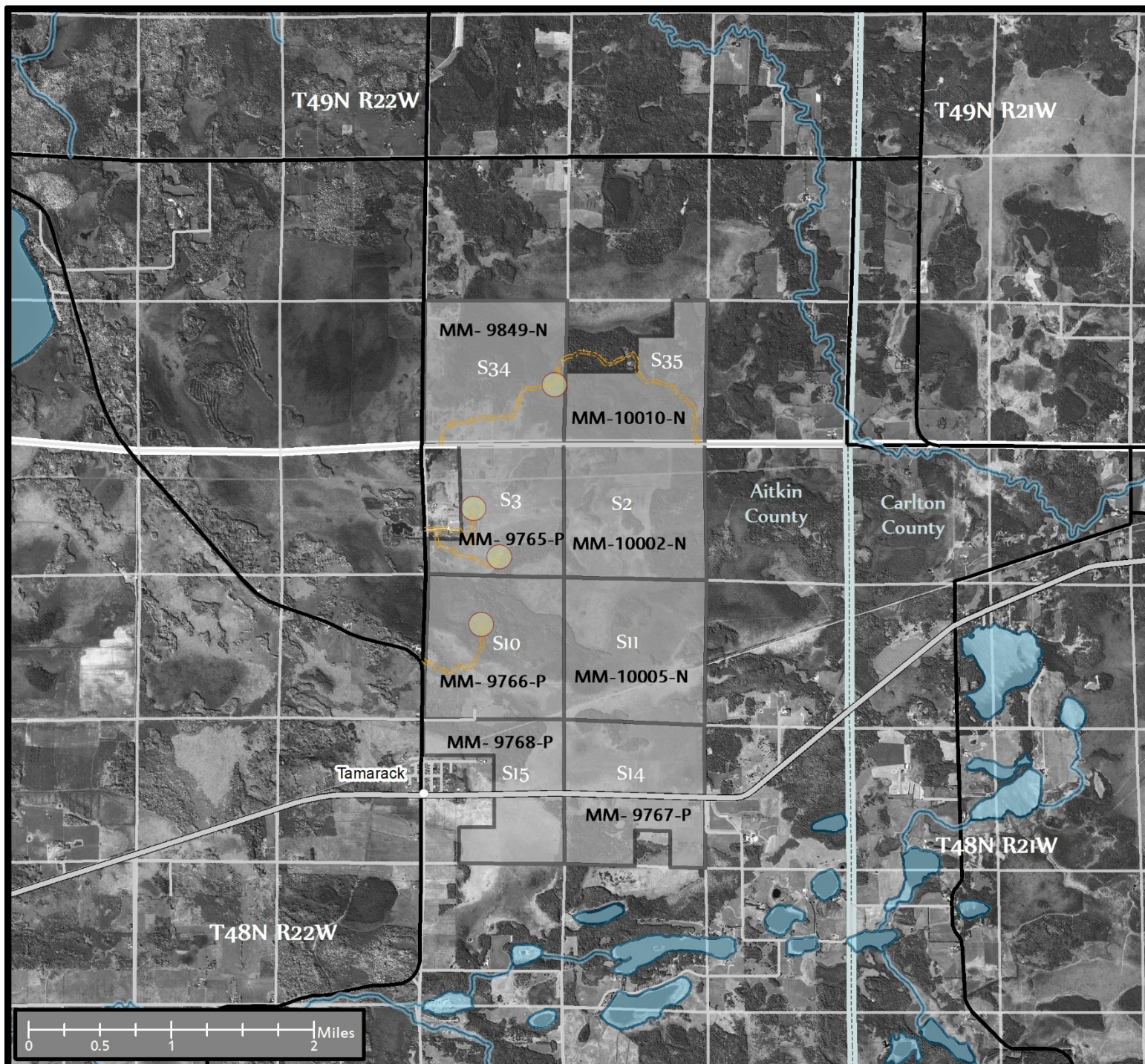


Figure 1. DNR Summary Map of Exploration Plan

-  Proposed Exploratory Boring Sites
-  Access Trails
-  State Nonferrous Metallic Mineral Leases
-  State, County, Local, and Forest Roads
-  Public Waters
- No exclusion areas or special features occur within or bordering the leases proposed for exploration.*

This map is for reference purposes only. The State of Minnesota's land and mineral interests GIS data including lease boundaries is mapped at 40 acre Public Land Survey resolution.

GIS Data Sources: Exploration areas as described by the Explorer. State minerals leases, public waters inventory and access, and PLS boundaries from DNR. Highways and roads from MnDOT. 2010 aerial photography from Farm Service Agency.

