



Exploration Plan on State Nonferrous Metallic Minerals Leases

Submitted by Talon Nickel USA LLC on November 6, 2019
and summarized here by the DNR Division of Lands and Minerals

Narrative: Talon Nickel USA LLC (Talon) proposes to explore for metallic mineral deposits in Aitkin County in an area extending from about ½ mile south-southeast to about 3.5 miles north-northeast of Tamarack, Minnesota (Figure 1). Exploration will include ground and down-hole geophysical work. Down-hole geophysical work will occur in selected existing borings that are temporarily sealed. If any of these borings are found to be blocked at depth, a drill rig will be used to clear the blockage before inserting the geophysical probes. Kennecott Exploration Company, the lessee of the state leases, has designated Talon as the operator for the exploration proposed. The DNR has approved the operating agreement between Kennecott Exploration Company and Talon.

State nonferrous metallic mineral lease ids: Exploration is proposed on 8 leases: MM-9765-P, MM-9766-P, MM-9767-P, MM-9768-P, MM-9849-N, MM-10002-N, MM-10005-N, MM-10010-N.

Public Land Survey location: Sections 34 and 35 of T49N R22W (Haugen Township); and Section 2, 3, 10, 11, 14, 15 of T48N R22W (Clark Township).

Types of exploration activity: Down-hole and ground geophysics

Expected time period of activity: Upon authorization by DNR through April 15, 2020.

Access: The operator will use public roads, forest roads, and other existing access routes and existing drill sites. No new access routes are proposed. Geophysical equipment will be transported by foot where there is no existing access. Temporary matting may be placed as needed to enable safe access.

Surface ownership: Exploration may occur on County and DNR-administered lands and private lands. The exploration plan states that work will not begin on private lands without the explicit permission of the landowner. Upon DNR approval, which may include stipulations, the operator may proceed as described in the exploration plan on state-owned surface lands.

Explorer contact: Brian Goldner, (218) 768-3292 or goldner@talonmetals.com

This report is posted on the [DNR's exploration plan webpage](#).

Maps and Data Disclaimer

The State of Minnesota makes no representations or warranties express or implied, with respect to the use of the information contained herein regardless of its format or the means of its transmission. There is no guarantee or representation to the user as to the accuracy, currency, suitability, completeness, usefulness, or reliability of this information for any purpose. The user accepts the information "as is." The State of Minnesota assumes no responsibility for loss or damage incurred as a result of any user's reliance on this information. All maps, reports, data, and other information contained herein are protected by copyright. Permission is granted to copy and use the materials herein for any lawful noncommercial purpose. Any user of this information agrees not to transmit or provide access to all or any part of this information to another party unless the user shall include with the information a copy of this disclaimer.

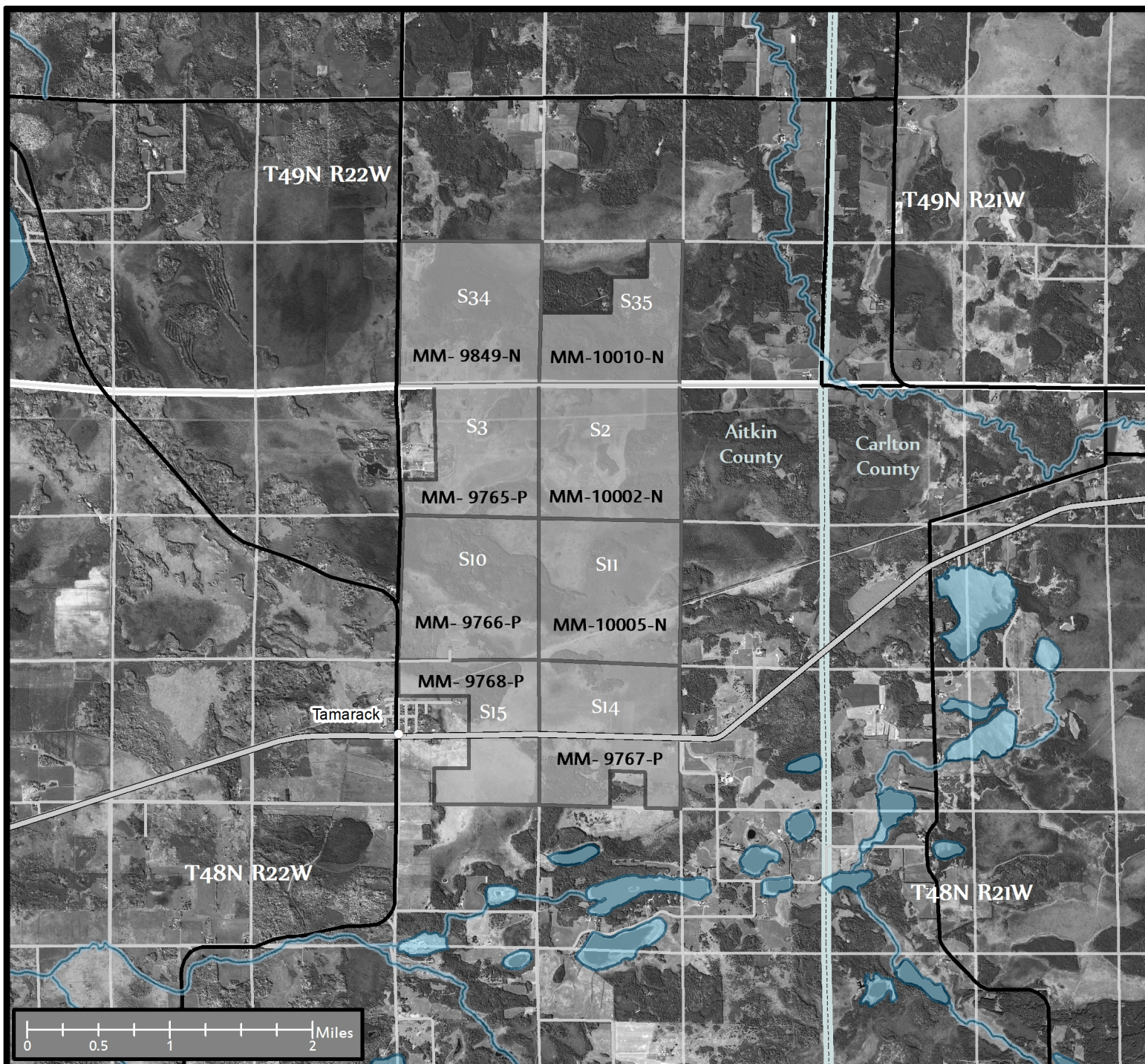


Figure 1. DNR Summary Map of Exploration Plan

State, County, Local, and Forest Roads

Public Waters

This map is for reference purposes only. The State of Minnesota's land and mineral interests GIS data including lease boundaries is mapped at 40 acre Public Land Survey resolution.

State Nonferrous Metallic Mineral Leases

No exclusion areas or special features occur within or bordering the leases proposed for exploration.

GIS Data Sources - Exploration areas as described by the Explorer. State minerals leases, public waters inventory and access, and PLS boundaries from DNR. Highways and roads from MnDOT. 2010 aerial photography from Farm Service Agency.

