



Minerals Exploration Plan on State Nonferrous Metallic Minerals Leases

Submitted by AngloGold Ashanti Minnesota on December 20, 2018 and summarized here by the DNR Division of Lands and Minerals

Narrative: AngloGold Ashanti Minnesota (AGAM) proposes to explore for metallic mineral deposits in northeast Itasca County, Minnesota in an area within about five miles of the junction of State Highways 1 and 65 (Figure 1). AGAM plans to drill exploratory borings at 28 sites using the rotosonic drilling method. Rotosonic drilling uses high frequency vibration of the drill bit to advance and collect cores of soils, glacial sediments, and a short length of the underlying bedrock. The borings will end shortly after the top of bedrock is encountered and then be permanently sealed. Some sites require frozen ground before drilling can occur.

Exploration is proposed on the following State nonferrous metallic minerals leases: MLMB000047, MLMB000050, MLMB000052, MLMB000053, MLMB000054, MLMB000056, MLMB000062, MLMB000086, MLMB000089, MLMB000091, MLMB000092, MLMB000097, MLMB000098, MLMB000130, MLMB000132, MLMB000140, and MLMB000141.

Public Land Survey location: Sections 1, 4, 6, 7, 8, 10, and 16 of T61N R22W; Sections 1 and 3 of T61N R23W, Sections 26, 29, 31, and 32 of T62N R22W, and Sections 25, 27, 35, and 36 of T62N R23W.

Types of exploration activity: Exploratory borings (rotosonic drilling).

Expected time period of activity: January 2019 through October 2019.

Access: AGAM will use existing public roads, state forest access roads, and other access trails to get to the drill sites. Mowing and brushing are anticipated at the boring sites and some access trails. AGAM does not propose new roads or trails.

Surface ownership: AGAM will coordinate with the Itasca County Land Department for access. Upon DNR approval, which may include stipulations, AGAM will have the right to explore as described in the exploration plan on state-owned surface lands. AGAM will have the right to explore on other lands covered by state mineral lease upon gaining access.

Explorer contact: Jonathan Gorman, (303) 889-1461 or jgorman@anglogoldashanti.com

This report is posted on the [DNR's exploration plan webpage](#).

Maps and Data Disclaimer

The State of Minnesota makes no representations or warranties express or implied, with respect to the use of the information contained herein regardless of its format or the means of its transmission. There is no guarantee or representation to the user as to the accuracy, currency, suitability, completeness, usefulness, or reliability of this information for any purpose. The user accepts the information "as is." The State of Minnesota assumes no responsibility for loss or damage incurred as a result of any user's reliance on this information. All maps, reports, data, and other information contained herein are protected by copyright. Permission is granted to copy and use the materials herein for any lawful noncommercial purpose. Any user of this information agrees not to transmit or provide access to all or any part of this information to another party unless the user shall include with the information a copy of this disclaimer.

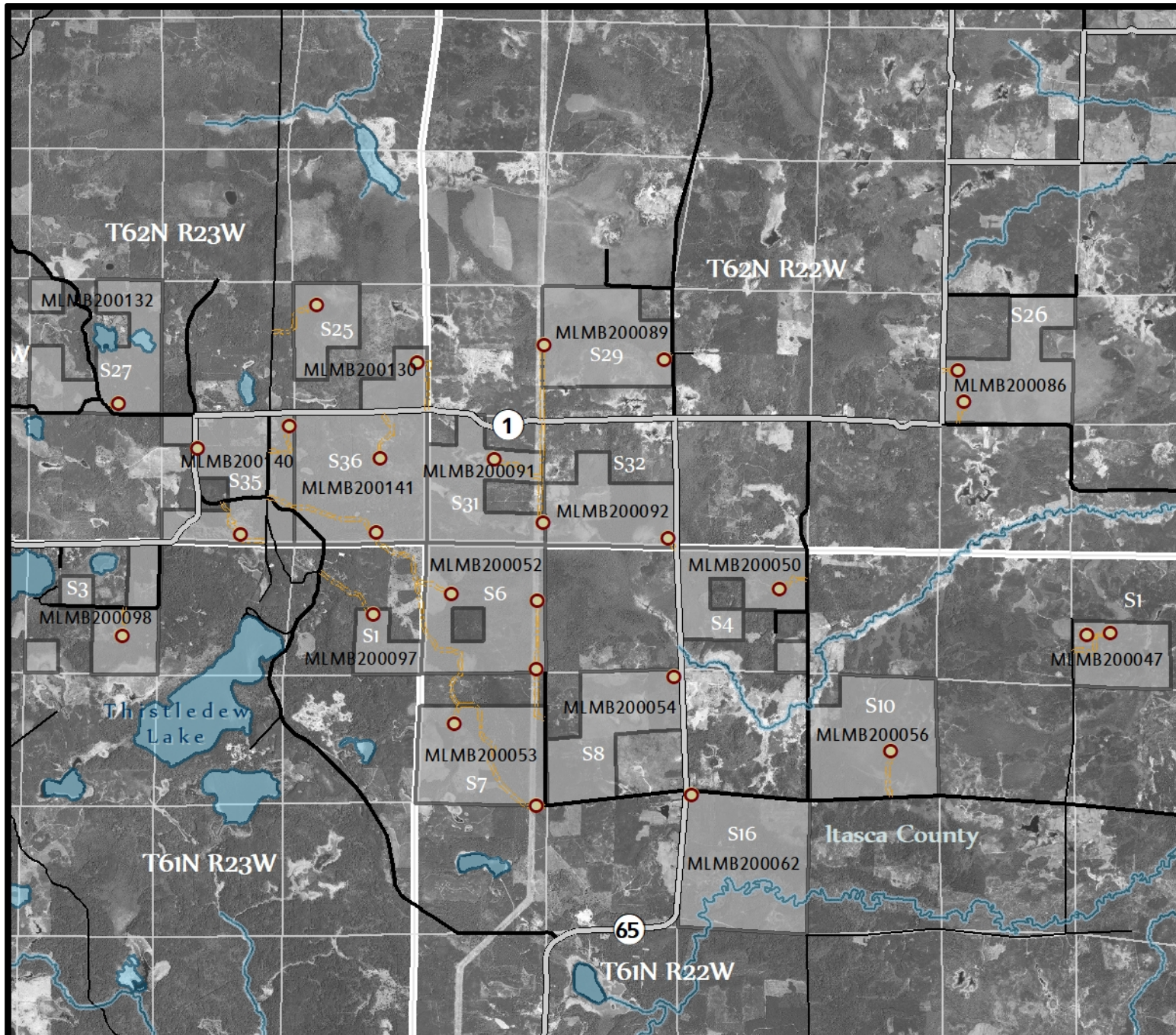


Figure 1. DNR Overview Map of Exploration Plan

