



Minerals Exploration Plan on State Nonferrous Metallic Minerals Leases

Submitted by AngloGold Ashanti Minnesota on November 9, 2018 and summarized here by the DNR Division of Lands and Minerals

Narrative: AngloGold Ashanti Minnesota (AGAM) proposes to explore for metallic mineral deposits near the Itasca—Koochiching County border located about 7 miles east of Effie, Minnesota (Figure 1). AGAM plans to drill exploratory borings at 12 sites using the rotosonic drilling method. Rotosonic drilling uses high frequency vibration of the drill bit to advance and collect cores of soils, glacial sediments, and a short length of the underlying bedrock. The borings will end shortly after the top of bedrock is encountered and then be permanently sealed. Some sites require frozen ground before drilling can occur.

State nonferrous metallic mineral lease ids: Exploration is proposed on 11 leases: MLMB200178, MLMB200179, MLMB200180, MLMB200181, MLMB200182, MLMB200183, MLMB200184, MLMB200189, MLMB200191, MLMB200251, and MLMB200252.

Public Land Survey location: Sections 4, 5, 6, 7, 8, 9, 10, 18, and 21 of T62N R24W; and Sections 35 and 36 of T63N R25W.

Types of exploration activity: Exploratory borings (rotosonic drilling).

Expected time period of activity: December 2018 through October 2019.

Access: AGAM will use existing public roads, state forest access roads, and other access trails to get to the drill sites. Mowing and brushing are anticipated at the boring sites and some access trails. AGAM does not propose new roads or trails.

Surface ownership: All drill sites are on County or DNR-administered lands. Upon DNR approval, which may include stipulations, AGAM will have the right to explore as described in the exploration plan on state-owned surface lands.

Explorer contact: Jonathan Gorman, (303) 889-1461 or jgorman@anglogoldashanti.com

This report is posted on the [DNR's exploration plan webpage](#).

Maps and Data Disclaimer

The State of Minnesota makes no representations or warranties express or implied, with respect to the use of the information contained herein regardless of its format or the means of its transmission. There is no guarantee or representation to the user as to the accuracy, currency, suitability, completeness, usefulness, or reliability of this information for any purpose. The user accepts the information "as is." The State of Minnesota assumes no responsibility for loss or damage incurred as a result of any user's reliance on this information. All maps, reports, data, and other information contained herein are protected by copyright. Permission is granted to copy and use the materials herein for any

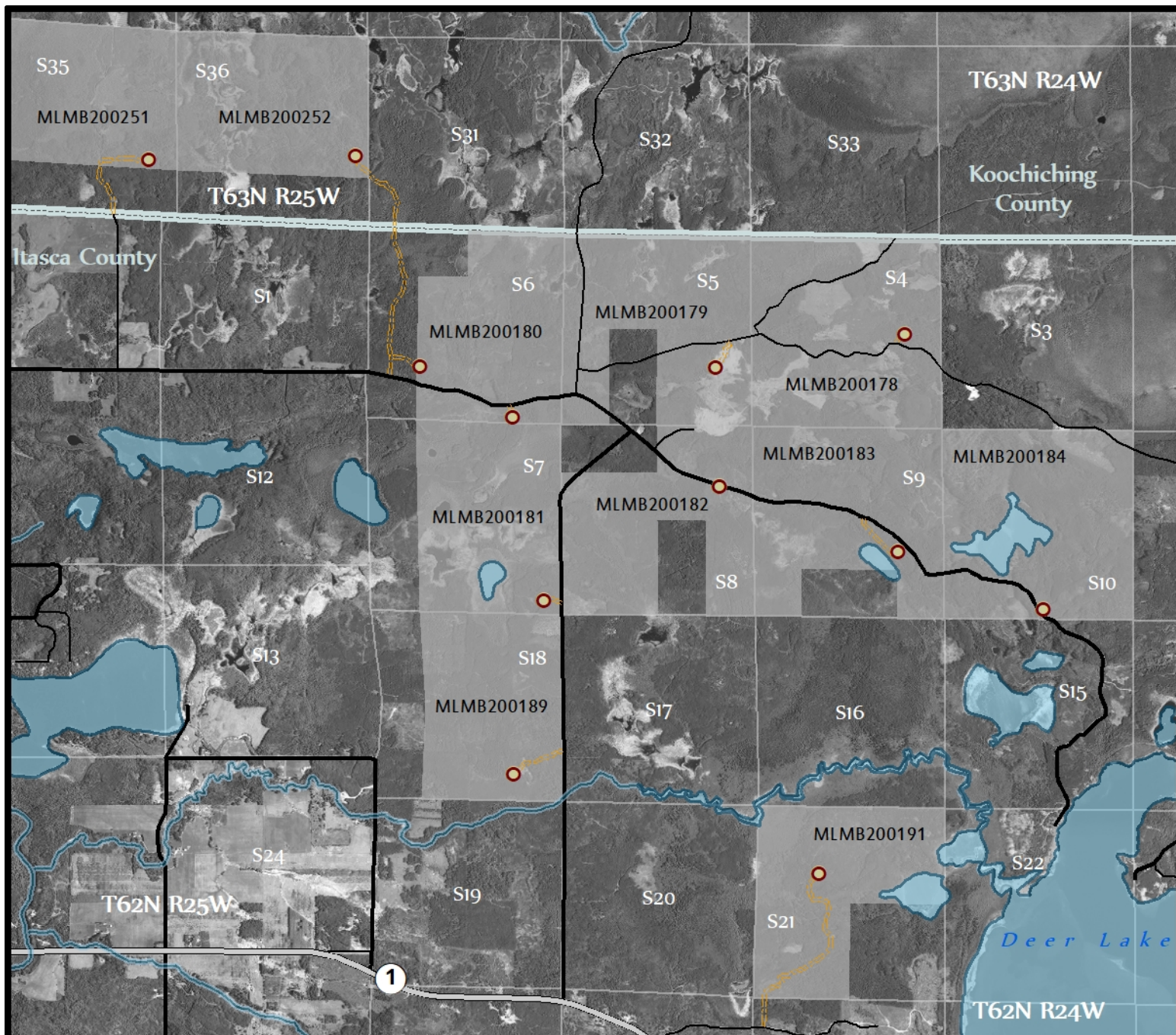


Figure 1. DNR Summary Map of Exploration Plan

