



# Minerals Exploration Plan on State Nonferrous Metallic Minerals Leases

Submitted by Encampment Minerals, Inc. on October 29, 2018 and summarized here by the DNR Division of Lands and Minerals

**Narrative:** Encampment Minerals, Inc. (Encampment) proposes to explore for metallic mineral deposits in an area about 5 miles south of Hoyt Lakes in St. Louis County (see Figure 1). Encampment plans to drill exploratory borings on up to 15 drill sites. Some drill sites may be moved up to 500 feet from where they are proposed due to new data or site conditions. Encampment indicates that all drill sites will be outside the shoreland of public waters. Drilling will occur in winter when the ground is frozen. Encampment has drilled in this project area since 2009 on an intermittent basis.

**State nonferrous metallic mineral lease ids:** Exploration is proposed on 3 leases: MM-10256-N, 10207-N, and 10208-N.

**Public Land Survey location:** Exploration may occur in Sections 3 and 4 of T57N R14W.

**Types of exploration activity:** Exploratory borings and down hole geophysical surveys.

**Expected time period of activity:** January 2019 and continuing as long as the ground is sufficiently frozen.

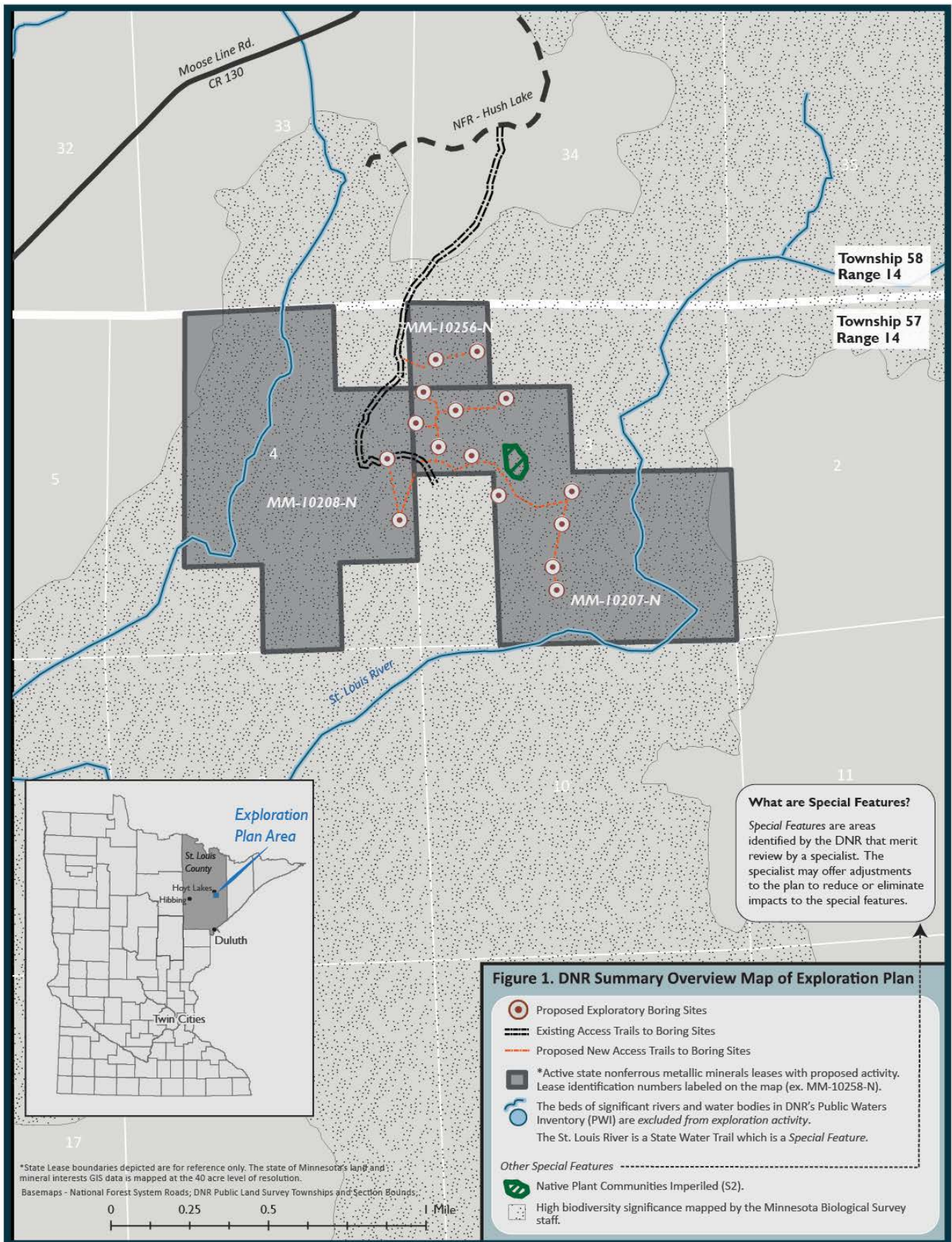
**Surface ownership:** Upon DNR approval, which may include stipulations, Encampment will have the right to explore as described in the exploration plan on state-owned surface lands and other lands covered by state leases after coordinating with the affected landowners for access.

**Explorer contact:** Ted DeMatties, (763) 232-8281 or [tdematties@aol.com](mailto:tdematties@aol.com)

This report is posted on the [DNR's exploration plan webpage](#).

**Maps and Data Disclaimer**

The State of Minnesota makes no representations or warranties express or implied, with respect to the use of the information contained herein regardless of its format or the means of its transmission. There is no guarantee or representation to the user as to the accuracy, currency, suitability, completeness, usefulness, or reliability of this information for any purpose. The user accepts the information "as is." The State of Minnesota assumes no responsibility for loss or damage incurred as a result of any user's reliance on this information. All maps, reports, data, and other information contained herein are protected by copyright. Permission is granted to copy and use the materials herein for any lawful noncommercial purpose. Any user of this information agrees not to transmit or provide access to all or any part of this information to another party unless the user shall include with the information a copy of this disclaimer.



Encampment Minerals, Inc., Exploration Plan 10/29/2018

Figure 1 by DNR - Lands and Minerals Division 11/01/2018

DNR Summary Report for Encampment Minerals Inc., Exploration Plan Submitted on October 29, 2018 and Published by DNR's Lands and Minerals Division on November 2, 2018