



Minerals Exploration Plan on State Nonferrous Metallic Minerals Leases

Submitted by [Kennecott Exploration Company](#) on November 16, 2017 and summarized here by the DNR Division of Lands and Minerals

Narrative: Kennecott Exploration Company (Kennecott) submitted an Exploration Plan to explore for metallic mineral deposits by drilling this winter and early spring. Kennecott plans to drill exploratory borings at 6 to 10 sites in an area about 1.5 to 4 miles north of Tamarack, Minnesota (Figure 1). Seven drill sites are depicted in Figure 1. Kennecott may add more drill sites on state mineral leases, depending on drilling results. The additional drill sites will be within 1200 feet of the drill sites depicted in Figure 1.

Kennecott will use a diamond core drilling method. Kennecott plans to run down-hole geophysical surveys in each exploratory boring that is drilled.

State nonferrous metallic mineral lease ids: Drilling is proposed on 4 leases: MM-9765-P, MM-9849-N, MM-10007-N, and MM-10010-N.

Public Land Survey location: Section 3 of T48N R22W and Sections 27, 34 and 35 of T49N R22W in Aitkin County.

Types of exploration activity: Exploratory borings (diamond core drilling), and down-hole geophysical surveys.

Expected time period of activity: Upon approval through approximately April 15, 2018.

Access: Kennecott will use existing trails and develop some new trails to access the exploratory boring sites.

Surface ownership: Pending DNR approval, which may include stipulations, Kennecott will have the right to explore as described in the exploration plan on state-owned surface lands. Kennecott has coordinated or will coordinate with the Aitkin County Land Department as well as any other affected private landowners for access to tax-forfeited and private lands.

Explorer contact: Brian Goldner, Kennecott Exploration Company, (218) 768-3292 or brian.goldner@riotinto.com

This report is posted on the [DNR's exploration plan webpage](#).

DNR Summary Report for Kennecott Exploration Company, Exploration Plan Submitted on November 16, 2017 and Published by DNR's Lands and Minerals Division on November 27, 2017

Maps and Data Disclaimer

The State of Minnesota makes no representations or warranties express or implied, with respect to the use of the information contained herein regardless of its format or the means of its transmission. There is no guarantee or representation to the user as to the accuracy, currency, suitability, completeness, usefulness, or reliability of this information for any purpose. The user accepts the information "as is." The State of Minnesota assumes no responsibility for loss or damage incurred as a result of any user's reliance on this information. All maps, reports, data, and other information contained herein are protected by copyright. Permission is granted to copy and use the materials herein for any lawful noncommercial purpose. Any user of this information agrees not to transmit or provide access to all or any part of this information to another party unless the user shall include with the information a copy of this disclaimer.

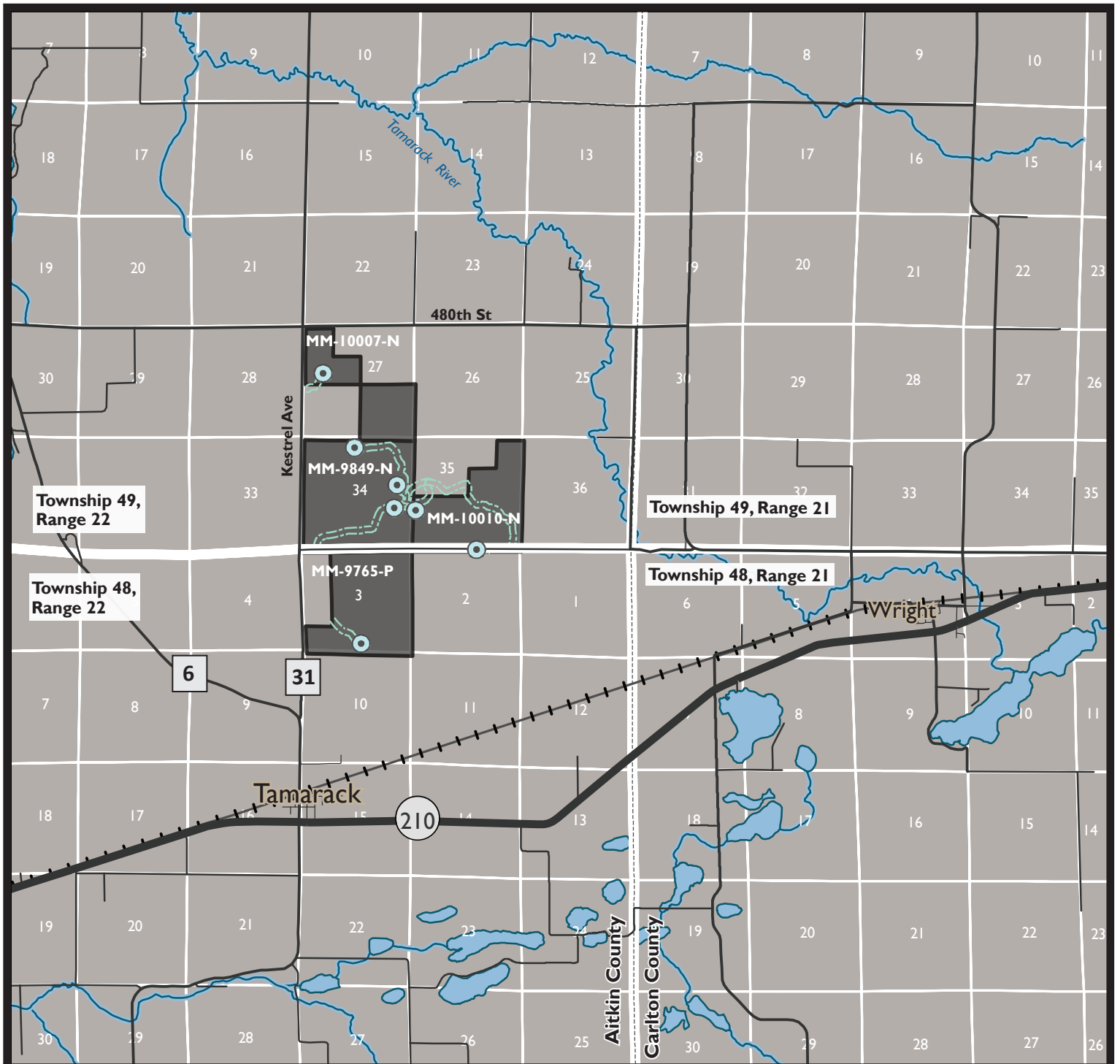


Figure 1. DNR Summary Map of Exploration Plan

- Proposed exploratory boring sites
- Proposed access trails
- State nonferrous metallic minerals leases that have proposed exploration activity
- The beds of significant rivers and water bodies in DNR's Public Waters Inventory are excluded from exploration activity

Natural Heritage Features and Historic & Archaeologic Sites are not shown because they are non-public data.

Data Notes:
 State lease boundaries depicted are for reference only. The GIS data of the state of Minnesota's land and mineral interests is mapped at the 40 acre Public Land Survey level or government lot. The map is not showing special features data because the proposed activity areas do not have any public special features data.

