



Minnesota Department of Natural Resources (DNR)

Minerals Exploration Plan on State Nonferrous Metallic Minerals Leases

*AngloGold Ashanti Minnesota
Exploration Plan Submitted on 05/27/2016*

DNR Summary Report and Associated Maps

An exploration plan was submitted by AngloGold Ashanti Minnesota (AGAM) on May 27, 2016 and summarized here by the DNR on June 6, 2016. The locations of proposed exploration activities by this state nonferrous metallic minerals lessee are shown in a standard format and legend. This report and associated maps were created by the Minnesota DNR, Division of Lands and Minerals.

This report and associated maps are posted on the DNR's exploration plan website at:
http://www.dnr.state.mn.us/lands_minerals/metallic_nf/regulations.html

This summary report and associated maps should be distributed as a complete document due to the relative nature of the content.

Minerals Exploration Plan on State Nonferrous Metallic Mineral Leases

AngloGold Ashanti Minnesota Exploration Plan

Summarized by the Minnesota DNR

May 27, 2016

Narrative: AngloGold Ashanti Minnesota is conducting exploration activities to search for metallic mineral deposits, such as gold, in the bedrock on its existing 33 state mineral leases in Koochiching County (see location map). It submitted an Exploration Plan to the DNR for review on May 27, 2016.

State Minerals Lease Numbers: MLMB-200004 to MLMB-200036 (33 leases seen on following map)

Public Land Survey Location: Township 63, Range 22, Sections 1-4, 7, 9-36

Types of exploration activity: The Explorer will perform such activities as geological mapping, which involves visual examination of bedrock outcrops, collection of samples of bedrock outcrops and/or glacial sediments, and geophysical surveys. The explorer will use hand tools such as a hammer and chisel, hand shovels, hand augers, or portable hand-held power tools such as a posthole digger to collect samples. The Explorer will conduct ground-based geophysical surveys, including gravity, magnetics, electromagnetics, and seismic methods. These methods use portable sensors to measure properties of the Earth such as gravity.

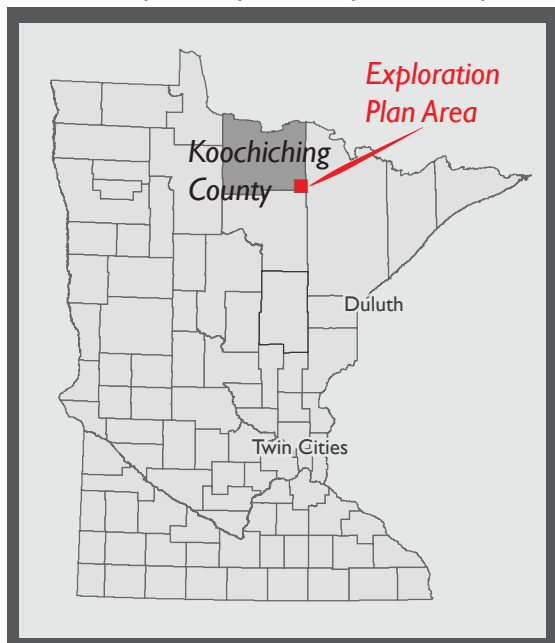
Expected time period of activity: Approval of exploration plan through December 31, 2016

Plans to access exploration sites: The Explorer will use existing roads and trails either by foot, automobile, or ATV.

Surface Ownership: Upon DNR approval the Explorer has the right to work on state-owned surface, which covers most of these state mineral leases. There are private surface owners over some of the state mineral parcels. The Explorer is working to obtain access agreements with the surface owners and will not do exploration work on a specific parcel until an agreement with the surface owner is in effect there. The Explorer will also obtain access from the Koochiching County Land department for the county-administered surface parcels.

Explorer contact: Paul J. Bartos, AngloGold Ashanti Minnesota, (303) 889-1408 or PBartos@AngloGoldAshantiNA.com

Locator map for exploration plan activity



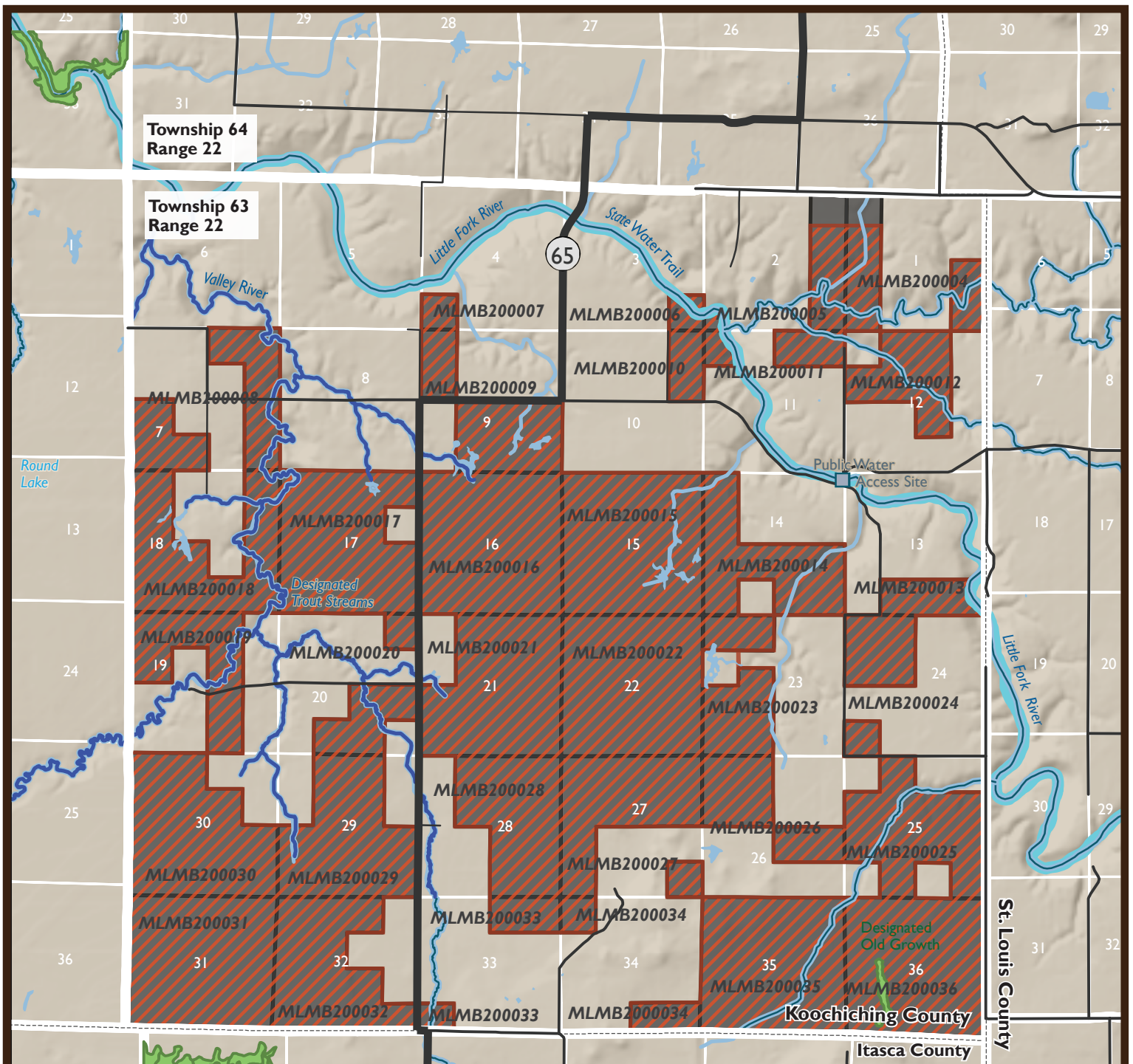
Exploration Plan Area

This small scale map displays the general location of the exploration plan relative to other cities in northern Minnesota. The following two maps provide more details on the proposed exploration area.

See following pages 3 and 4 for detailed maps

Maps and Data Disclaimer

The State of Minnesota makes no representations or warranties express or implied, with respect to the use of the information contained herein regardless of its format or the means of its transmission. There is no guarantee or representation to the user as to the accuracy, currency, suitability, completeness, usefulness, or reliability of this information for any purpose. The user accepts the information "as is." The State of Minnesota assumes no responsibility for loss or damage incurred as a result of any user's reliance on this information. All maps, reports, data, and other information contained herein are protected by copyright. Permission is granted to copy and use the materials herein for any lawful noncommercial purpose. Any user of this information agrees not to transmit or provide access to all or any part of this information to another party unless the user shall include with the information a copy of this disclaimer.



Narrative: AngloGold Ashanti Minnesota is conducting exploration activities to search for metallic mineral deposits, such as gold, in the bedrock on its existing 33 state mineral leases in Koochiching County. It submitted an Exploration Plan to the DNR for review on May 27, 2016.

Exploration activities: The Explorer will perform such activities as geological mapping, which involves visual examination of bedrock outcrops, collection of samples of bedrock outcrops and/or glacial sediments, and geophysical surveys. The Explorer will use hand tools such as a hammer and chisel, hand shovels, hand augers, or portable hand-held power tools such as a posthole digger to collect samples. The Explorer will conduct ground-based geophysical surveys, including gravity, magnetics, electromagnetics, and seismic methods. These methods use portable sensors to measure properties of the Earth such as gravity.

Plans to access exploration sites: The Explorer will gain access to the lands via existing trails and roads and will also walk in where needed. No new access trails will be built by the Explorer. No trees will be cut for this work.

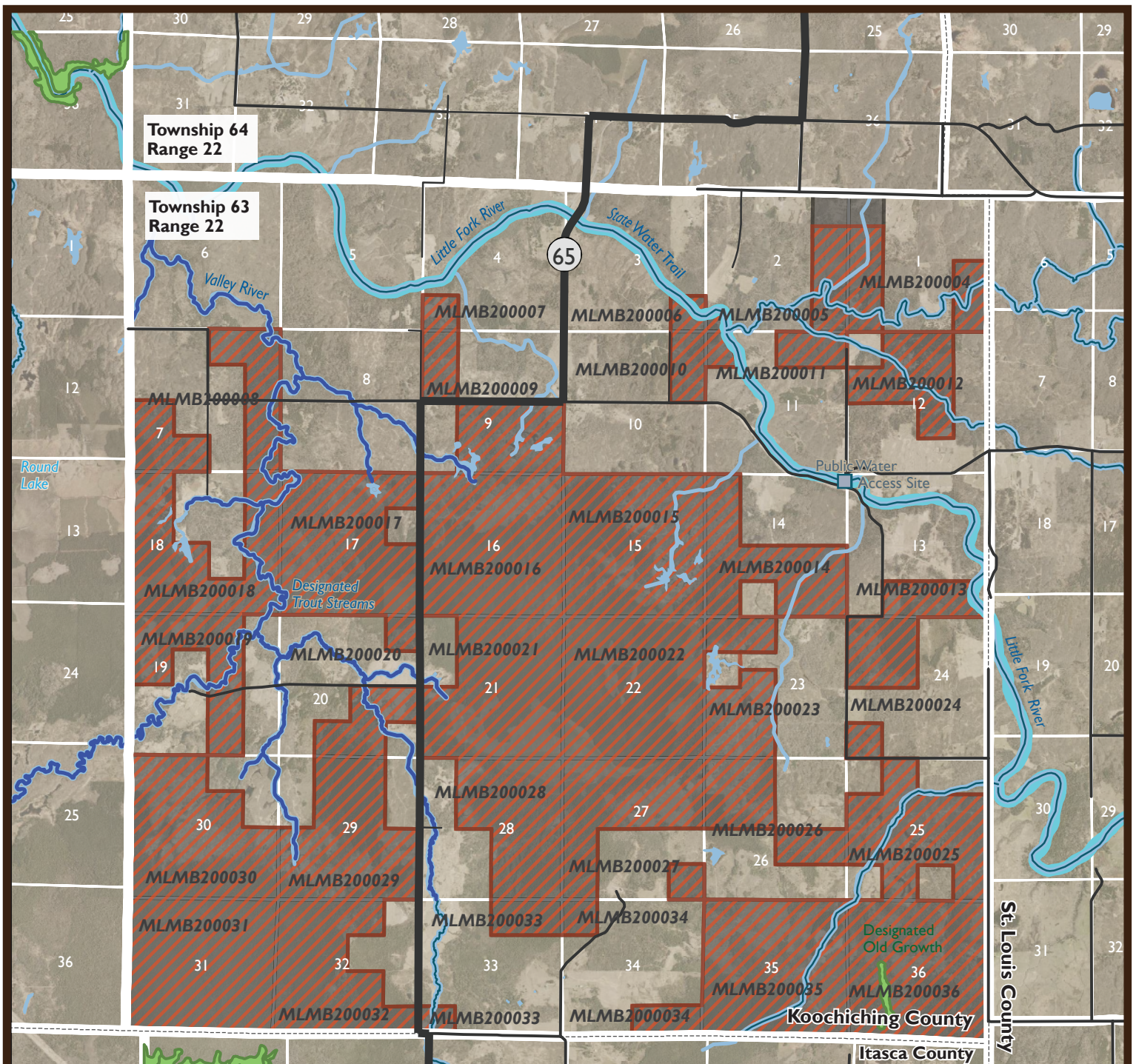
Surface Ownership: Upon approval by DNR the Explorer has the right to work on state-owned surface, which covers most of these state mineral leases. The Explorer is working to obtain access agreements with the surface owners and will not do exploration work on a specific parcel until an agreement with the surface owner is in effect there. The Explorer will also obtain access from the Koochiching County Land department for the county-administered surface parcels.

DNR Summary Overview Map of Exploration Plan Submitted by AngloGold Ashanti Minnesota

- Proposed areas of exploration activities on *Active State Leases
- *Active state nonferrous metallic minerals leases
Lease identification numbers labeled on the map (ex. MLMB200008).
- The beds of significant rivers and water bodies in DNR's Public Waters Inventory (PWI) are excluded from exploration activity.
- Designated Trout Streams are Special Features.
- The Little Fork River is a PWI and State Water Trail which is a Special Feature.
- Designated Old Growth Stands in Section 36 are excluded from surface activities.
- Public Water Access Sites are Special Features.

Other Special Features including Natural Heritage Features and Historic & Archaeologic Sites are not shown because they are non-public data. *Lease boundaries are for reference only. The state of Minnesota's land and mineral interests GIS data is mapped at the 40 acre level of resolution. Lease MLMB200023 has been modified for this map only to better represent the actual lease boundary.

Scale 1:63,360 0 0.5 1 2 Miles



Narrative: AngloGold Ashanti Minnesota is conducting exploration activities to search for metallic mineral deposits, such as gold, in the bedrock on its existing 33 state mineral leases in Koochiching County. It submitted an Exploration Plan to the DNR for review on May 27, 2016.

Exploration activities: The Explorer will perform such activities as geological mapping, which involves visual examination of bedrock outcrops, collection of samples of bedrock outcrops and/or glacial sediments, and geophysical surveys. The Explorer will use hand tools such as a hammer and chisel, hand shovels, hand augers, or portable hand-held power tools such as a posthole digger to collect samples. The Explorer will conduct ground-based geophysical surveys, including gravity, magnetics, electromagnetics, and seismic methods. These methods use portable sensors to measure properties of the Earth such as gravity.

Plans to access exploration sites: The Explorer will gain access to the lands via existing trails and roads and will also walk in where needed. No new access trails will be built by the Explorer. No trees will be cut for this work.

Surface Ownership: Upon approval by DNR the Explorer has the right to work on state-owned surface, which covers most of these state mineral leases. The Explorer is working to obtain access agreements with the surface owners and will not do exploration work on a specific parcel until an agreement with the surface owner is in effect there. The Explorer will also obtain access from the Koochiching County Land department for the county-administered surface parcels.

DNR Summary Air Photo Map of Exploration Plan Submitted by AngloGold Ashanti Minnesota

- Proposed areas of exploration activities on *Active State Leases
- *Active state nonferrous metallic minerals leases
Lease identification numbers labeled on the map (ex. MLMB200008).
- The beds of significant rivers and water bodies in DNR's Public Waters Inventory (PWI) are excluded from exploration activity.
- Designated Trout Streams are Special Features.
- The Little Fork River is a PWI and State Water Trail which is a Special Feature.
- Designated Old Growth Stands in Section 36 are excluded from surface activities.
- Public Water Access Sites are Special Features.

Other Special Features including Natural Heritage Features and Historic & Archaeologic Sites are not shown because they are non-public data. *Lease boundaries are for reference only. The state of Minnesota's land and mineral interests GIS data is mapped at the 40 acre level of resolution. Lease MLMB200023 has been modified for this map only to better represent the actual lease boundary.

Scale 1:63,360 0 0.5 1 2 Miles