



Minnesota Department of Natural Resources (DNR)

Minerals Exploration Plan on State Nonferrous Metallic Minerals Leases

*Kennecott Exploration Company
Exploration Plan Submitted on 11/19/2015*

DNR Summary Report and Associated Maps

The exploration plan was submitted by Kennecott Exploration Company (Kennecott) on November 19th, 2015 and summarized here by the DNR on November 24th, 2015. The locations of proposed exploration activities by this state nonferrous metallic minerals lessee are shown in a standard format and legend. Report and associated maps by Minnesota DNR, Lands and Minerals Division.

This report and associated maps are posted on the DNR's exploration plan website at:
http://www.dnr.state.mn.us/lands_minerals/metallic_nf/regulations.html

This summary report and associated maps should be distributed as a complete document due to the relative nature of the content.

Minerals Exploration Plan on State Nonferrous Metallic Mineral Leases

Kennecott Exploration Company Exploration Plan Summarized by the Minnesota DNR

November 19th, 2015

Narrative: Kennecott Exploration Company (explorer) submitted an Exploration Plan on November 19, 2015 for exploration activities to be conducted on 4 state nonferrous metallic mineral leases in Aitkin County near the city of Tamarack. The company proposes to drill approximately 10 to 20 drill holes (exploratory borings). The explorer has also proposed to conduct down-the-hole geophysical surveys in the exploratory borings.

State Minerals Lease Numbers: MM-9765-P, MM-9770-P, MM-9849-N, MM-10010-N

Public Land Survey Location: Sections 3 and 23 in Township 48, Range 22 in Aitkin County, Minnesota; Sections 34 and 35 in Township 49, Range 22 in Aitkin County, Minnesota.

Types of exploration activity: Exploratory borings and down-the-hole geophysical surveys

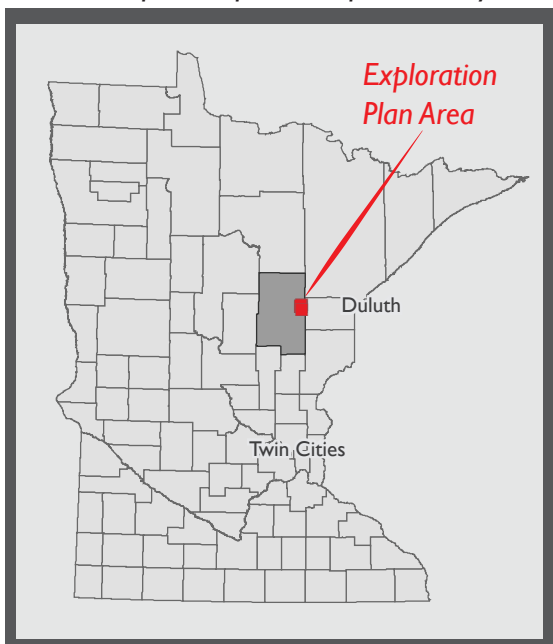
Expected time period of activity: December 16, 2015 - April 30, 2016

Plans to access exploration sites: The explorer will use existing access trails for the majority of drill sites. The explorer will need to extend an existing trail approximately 300 feet to access one of the exploratory boring sites. When ground conditions are frozen, drill sites in the wetlands will be built by packing or clearing snow so that the ground is sufficiently frozen and stable; composite mats may be placed, if it is deemed necessary for safety reasons. New exploration information obtained through the drilling program may indicate new drilling targets nearby. If necessary existing access trails will be extended on the order of several hundred feet to access new drilling locations.

Surface Ownership: The explorer has agreements or leases for the surface and mineral ownership on the parcels involved.

Explorer contact: John Storie, Kennecott Exploration Company, (218) 768-3292 or john.storie@riotinto.com

Locator map for exploration plan activity



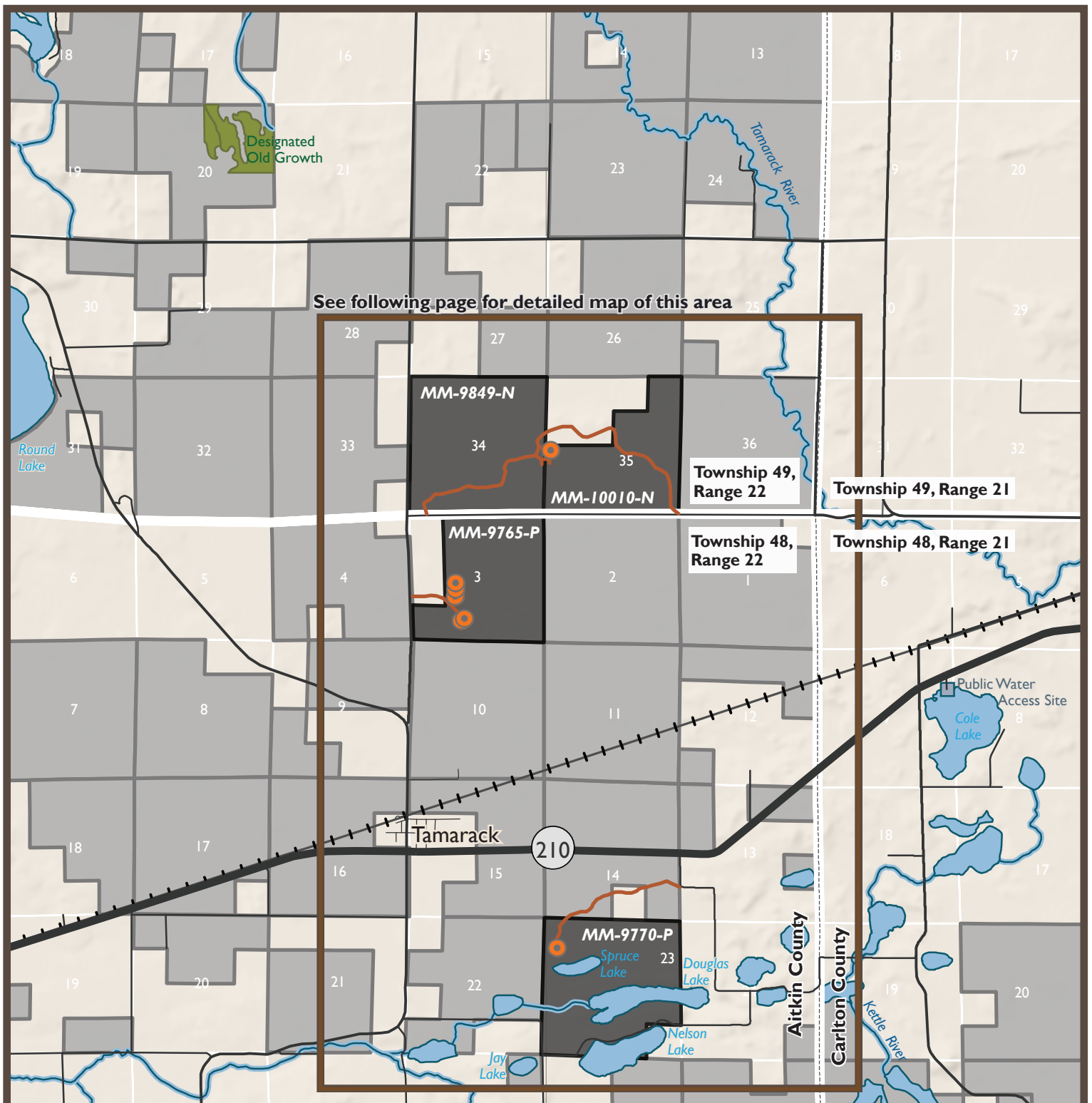
Exploration Plan Area

This small scale map displays the general location of the exploration plan relative to other cities in northern Minnesota. The following two maps provide more details on the exploration area including general locations of the drill holes, access trails, active state mineral leases, public land survey locations, cities, water bodies, special features, and excluded lands.

See following pages 3 and 4 for detailed maps

Maps and Data Disclaimer

The State of Minnesota makes no representations or warranties express or implied, with respect to the use of the information contained herein regardless of its format or the means of its transmission. There is no guarantee or representation to the user as to the accuracy, currency, suitability, completeness, usefulness, or reliability of this information for any purpose. The user accepts the information "as is." The State of Minnesota assumes no responsibility for loss or damage incurred as a result of any user's reliance on this information. All maps, reports, data, and other information contained herein are protected by copyright. Permission is granted to copy and use the materials herein for any lawful noncommercial purpose. Any user of this information agrees not to transmit or provide access to all or any part of this information to another party unless the user shall include with the information a copy of this disclaimer.



DNR Summary Overview Map of Exploration Plan Submitted by Kennecott Exploration on November 19, 2015

Narrative: Kennecott Exploration Company (explorer) submitted an Exploration Plan on November 19, 2015 for exploration activities to be conducted on 4 state nonferrous metallic mineral leases in Aitkin County near the city of Tamarack. The company proposes to drill approximately 10 to 20 drill holes (exploratory borings). The explorer has also proposed to conduct down-the-hole geophysical surveys in the exploratory borings.

Plans to access exploration sites: The explorer will use existing access trails for the majority of drill sites. The explorer will need to extend an existing trail approximately 300 feet to access an exploratory boring site seen on the detailed map. When ground conditions are frozen, drill sites in the wetlands will be built by packing or clearing snow so that the ground is sufficiently frozen and stable; composite mats may be placed, if it is deemed necessary for safety reasons. New exploration information obtained through the drilling program may indicate new drilling targets nearby. If necessary existing access trails will be extended on the order of several hundred feet to access new drilling locations.

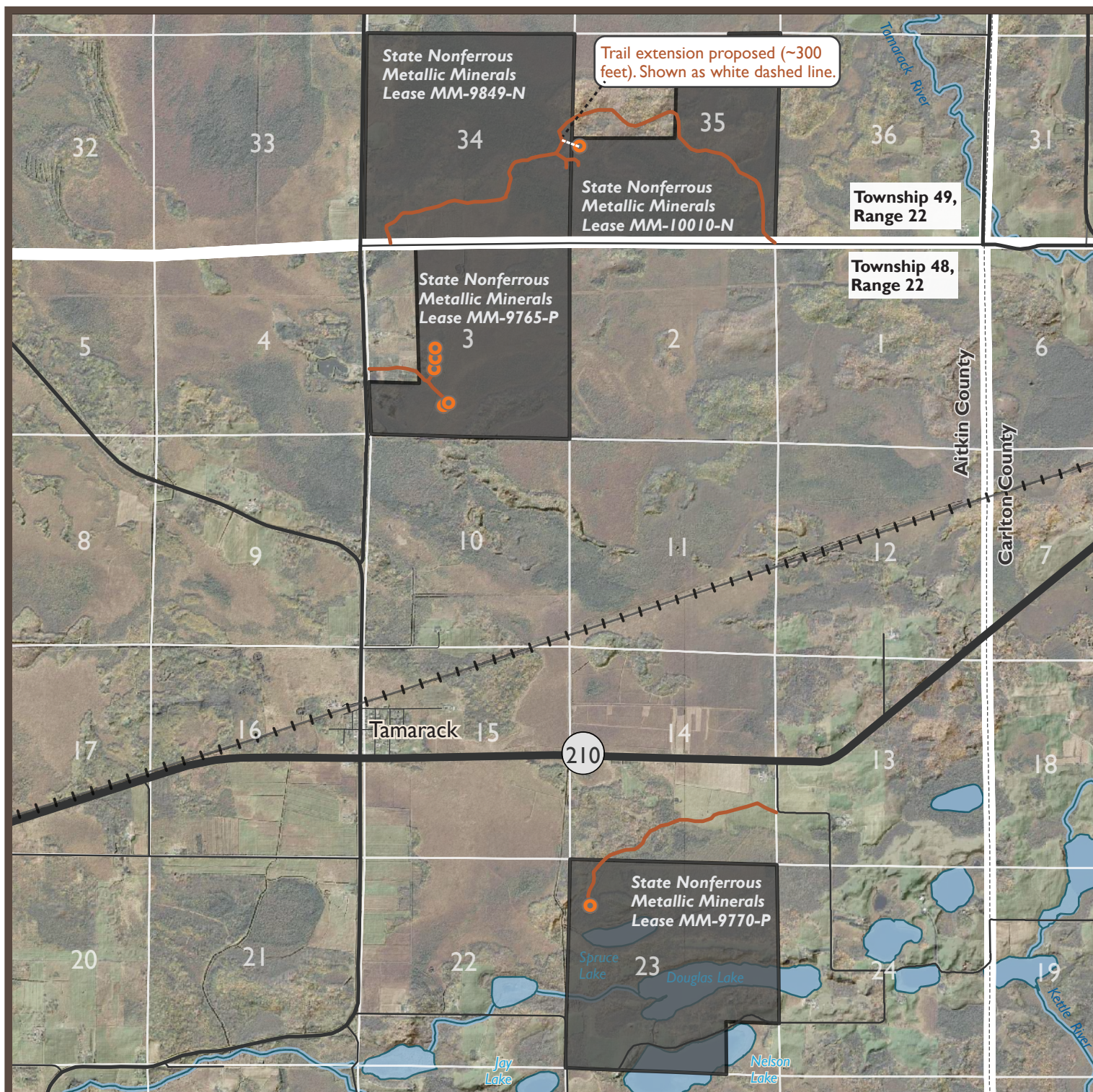
Surface Ownership: The explorer has agreements or leases for the surface and mineral ownership on the parcels involved.

- Proposed exploratory boring sites (10-20 borings planned at 4 locations)
- Existing access trails
Proposed trail extension not shown due to map scale, see following page.
- Active state minerals lease with proposed exploration activity in this plan. Lease identification numbers labeled on the map (ex. MM-9849-N).
- Active state leases with no proposed exploration activity in this plan.
- ~ The beds of significant rivers and water bodies in DNR's Public Waters Inventory are excluded from exploration activity
- Designated Old Growth Stands are Special Features
- Public Water Access Sites are Special Features

Natural Heritage Features and Historic & Archaeologic Sites are not shown because they are non-public data.

Scale 1:63,360





DNR Summary Detailed Map of Exploration Plan Submitted by Kennecott Exploration on November 19, 2015

Narrative: Kennecott Exploration Company (explorer) submitted an Exploration Plan on November 19, 2015 for exploration activities to be conducted on 4 state nonferrous metallic mineral leases in Aitkin County near the city of Tamarack. The company proposes to drill approximately 10 to 20 drill holes (exploratory borings). The explorer has also proposed to conduct down-the-hole geophysical surveys in the exploratory borings.

Plans to access exploration sites: The explorer will use existing access trails for the majority of drill sites. The explorer will need to extend an existing trail approximately 300 feet to access an exploratory boring site seen on the map. When ground conditions are frozen, drill sites in the wetlands will be built by packing or clearing snow so that the ground is sufficiently frozen and stable; composite mats may be placed, if it is deemed necessary for safety reasons. New exploration information obtained through the drilling program may indicate new drilling targets nearby. If necessary existing access trails will be extended on the order of several hundred feet to access new drilling locations.

Surface Ownership: The explorer has agreements or leases for the surface and mineral ownership on the parcels involved.

- Proposed exploratory boring sites (10-20 borings planned at 4 locations)
- Existing access trails
- Proposed access trail extension (~300 feet)
- Active state minerals lease with proposed exploration activity in this plan. Lease identification numbers labeled on the map (ex. MM-9849-N).
- The beds of significant rivers and water bodies in DNR's Public Waters Inventory are excluded from exploration activity

Natural Heritage Features and Historic & Archaeologic Sites are not shown because they are non-public data. Base map air photo image from 2011 DNR East-Central and Southeast MN 50cm Resolution True Color and Color Infrared Imagery and LiDAR hillshade topographic relief from DNR.

Scale 1:44,000

0 0.25 0.5 1 Miles