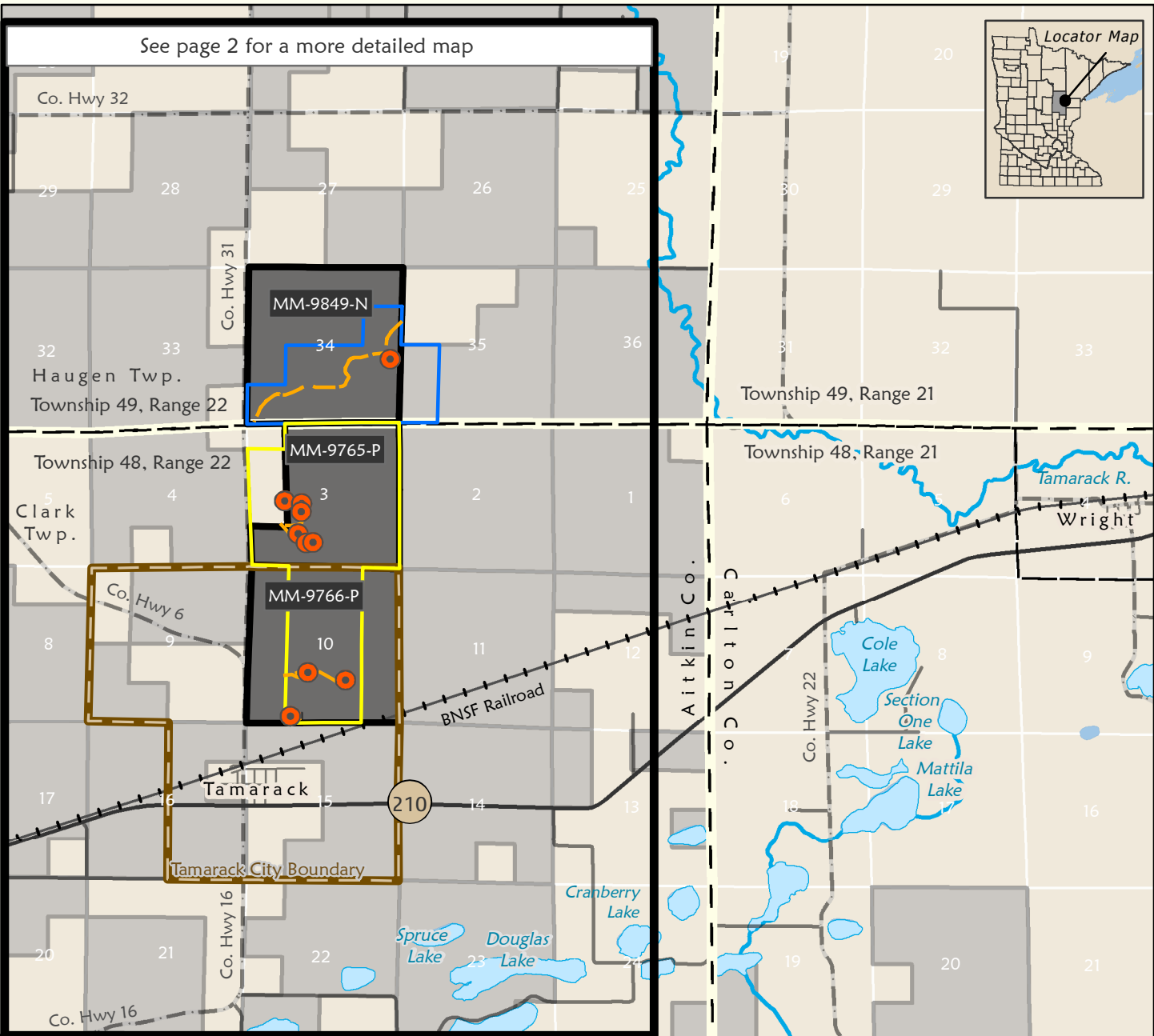
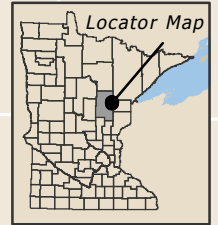


See page 2 for a more detailed map



**Map for Kennecott Exploration Company's Exploration Plan, Page 1**  
**Date Submitted to DNR: 04/15/2015**

**Proposed Exploration Activities on State Leases**

- Proposed Drilling Areas:  
Exploratory Borings and down-hole geophysics
- Existing access trails
- The explorer proposes to also conduct ground geophysical surveys near the proposed drilling areas.*
- State Leases for Nonferrous Metallic Minerals**
- Active Lease for this Exploration Plan: Kennecott Exploration Co., Labeled by Mineral Lease (e.g. MM-9765-P)
- Other Active Leases

**Exclusionary Features at this map extent**

- The beds of lakes in the DNR's Public Waters Inventory
- The beds of major or significant rivers in DNR's Public Waters Inventory

**Special Features at this map extent**

Natural Heritage Features and Historic or Archaeologic Sites are not shown because they are non-public data.

**Other symbols**

- Township and Range Boundaries
- Section Boundaries
- State Highway
- County Roads
- Other Roads (Township, Muni, Forest)
- Political Township Boundaries
- Municipal Boundaries

0 0.5 1 2 Miles Scale 1:63,360



**Wetland Permits from US Army Corp of Engineers**

- Permit Boundary: USACE (U.S. Army Corps of Engineers) wetland permits to Kennecott
- Proposed Permit Boundary: Kennecott submitted application to USACE for wetlands permit in this area

**Purpose:** The locations of proposed exploration activities by state mineral lessees are shown in a standard format and legend. Map created by DNR, Lands and Minerals Division, April 2015.

**Date Proposal Submitted to DNR:** April 15, 2015

**Lessee:** Kennecott Exploration Company

**Lessee Contact Person:** John Storie: (218) 768-3292 or john.storie@riotinto.com

**State Mineral Lease Numbers:** MM-9765-P, MM-9766-P, MM-9849-N

**Location on Public Land Survey:** T48N-R22W Sections 3, and 10; T49N-R22W

Section 34, Aitkin County.

**Types of Activity:** Exploratory borings, sealing the borings, down-hole geophysics, and ground geophysics.

**Time period for activity:** Commence on or after May 15, 2015 and all activities completed by November 6, 2015.

**Access Trails:** Explorer will use existing trails.

**Narrative:** The explorer proposes to drill approximately 10 to 25 exploratory borings. The explorer has also proposed to conduct geophysical surveys in the bore holes and on the ground. Kennecott has submitted a request to the US Army Corp of Engineers for a wetlands permit, which includes section 34 of T. 49, R. 22. The explorer has agreements or leases for the surface and mineral ownership on the parcels involved. Kennecott Exploration Company has been exploring for copper, nickel and platinum group elements in this area since the year 2000.

**Overview Map for Kennecott Exploration Plan, page 2**  
 Date Submitted to DNR:  
 04/15/2015

**Purpose:** The locations of proposed exploration activities by state mineral lessees are shown in a standard format and legend. Map created by DNR, Lands and Minerals Division, April 2015.  
**Date Proposal Submitted to DNR:** April 15, 2015  
**Lessee:** Kennecott Exploration Company  
**Lessee Contact Person:** John Storie: (218) 768-3292 or john.storie@riotinto.com  
**State Mineral Lease Numbers:** MM-9765-P, MM-9766-P, MM-9849-N  
**Location on Public Land Survey:** T48N-R22W Sections 3, and 10; T49N-R22W Section 34, Aitkin County.  
**Types of Activity:** Exploratory borings, sealing the borings, down-hole geophysics, and ground geophysics.  
**Time period for activity:** Commence on or after May 15, 2015 and all activities completed by November 6, 2015.  
**Access Trails:** Explorer will use existing trails.  
**Narrative:** The explorer proposes to drill approximately 10 to 25 exploratory borings. The explorer has also proposed to conduct geophysical surveys in the bore holes and on the ground. Kennecott has submitted a request to the US Army Corp of Engineers for a wetlands permit, which includes section 34 of T. 49, R. 22. The explorer has agreements or leases for the surface and mineral ownership on the parcels involved. Kennecott Exploration Company has been exploring for copper, nickel and platinum group elements in this area since the year 2000.

**Map Symbols**  
*Proposed Exploration Activities on State Leases*

- Proposed Drilling Areas: Exploratory Borings and down-hole geophysics
- Existing access trails

*The explorer proposes to also conduct ground geophysical surveys near the proposed drilling areas.*

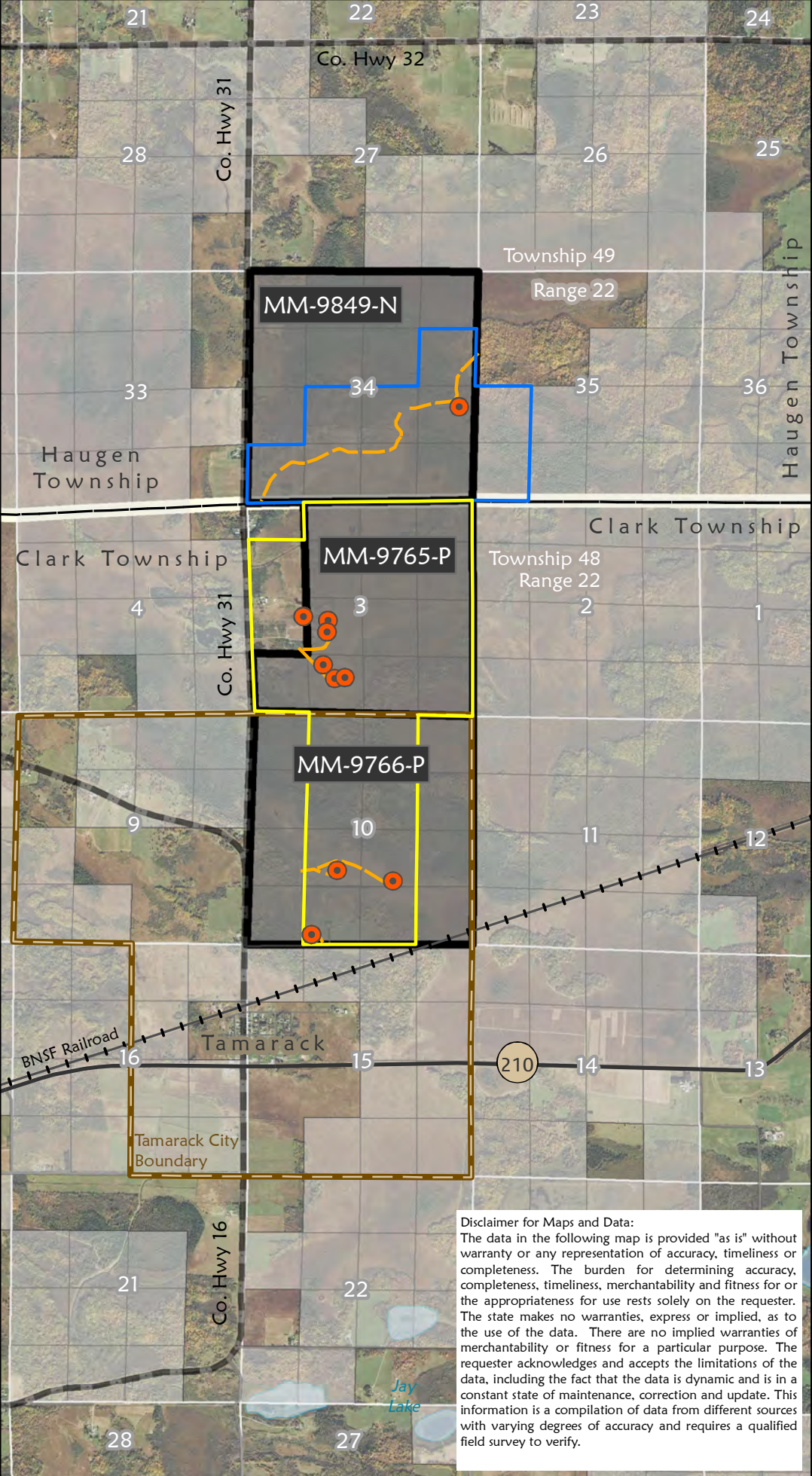
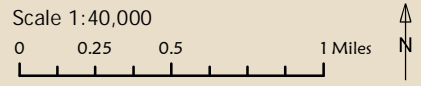
**State Leases for Nonferrous Metallic Minerals**

- Active Lease for this Exploration Plan: Kennecott Exploration Co. - Labeled by Mineral Lease# (e.g. MM-9765-P)
- Other Active Leases

**Wetland Permits from US Army Corp of Engineers**

- Permit Boundary: USACE (U.S. Army Corps of Engineers) wetland permits to Kennecott
- Proposed Permit Boundary: Kennecott submitted application to USACE for wetlands permit in this area

Basemap: 2011 DNR 50cm True color Air Photo.  
 See page 1 legend for other map symbol descriptions shown here (roads, political bounds, etc.).



**Disclaimer for Maps and Data:**  
 The data in the following map is provided "as is" without warranty or any representation of accuracy, timeliness or completeness. The burden for determining accuracy, completeness, timeliness, merchantability and fitness for or the appropriateness for use rests solely on the requester. The state makes no warranties, express or implied, as to the use of the data. There are no implied warranties of merchantability or fitness for a particular purpose. The requester acknowledges and accepts the limitations of the data, including the fact that the data is dynamic and is in a constant state of maintenance, correction and update. This information is a compilation of data from different sources with varying degrees of accuracy and requires a qualified field survey to verify.