

Overview Map for Kennecott Exploration Plan, page 1
DNR Submittal Plan Date: 7/3/2014

Purpose: The locations of proposed exploration activities by state mineral lessees are shown in a standard format and legend. Map by DNR, Lands and Minerals Division, July 2014.

Date Proposal Submitted to DNR: July 3, 2014

Lessee: Kennecott Exploration Company

Lessee Contact Person: John Storie: (218) 768-3292 or john.storie@riotinto.com

State Mineral Lease Numbers: MM-9765-P, MM-9766-P, MM-10007-N

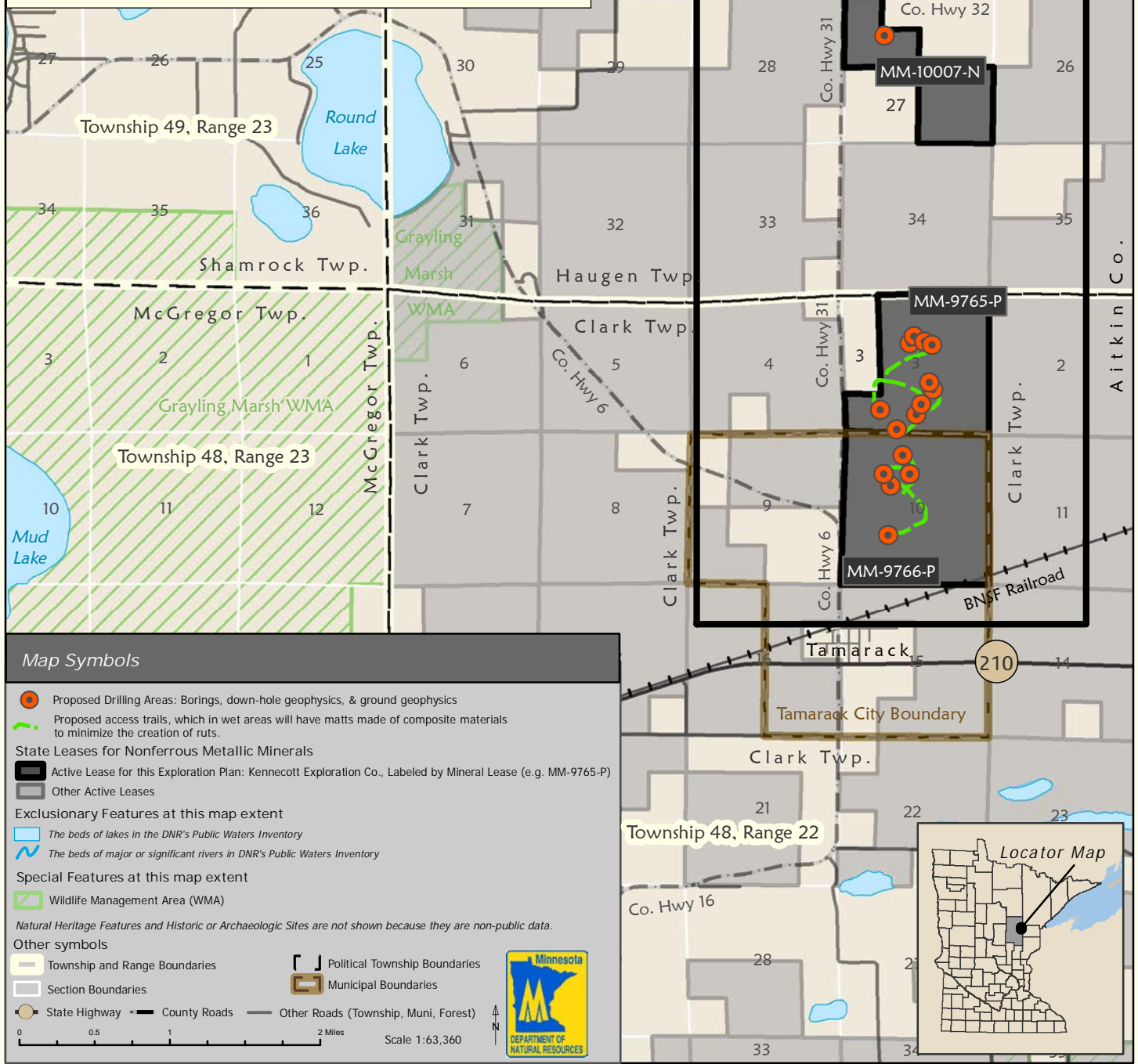
Location on Public Land Survey: T48N-R22W Sections 3 and 10 and T49N-R22W Section 27, Aitkin County

Types of Activity: Exploratory boring, down-hole geophysics and ground geophysical surveys

Time period for activity: July 28, 2014 to December 31, 2014.

New Access Trail Location: Yes, see map.

Narrative: The explorer has proposed to drill approximately 10 to 25 exploratory borings. The explorer has also proposed to conduct geophysical surveys in the bore holes and on the ground. The explorer has agreements or leases for the surface and mineral ownership on the parcels involved.



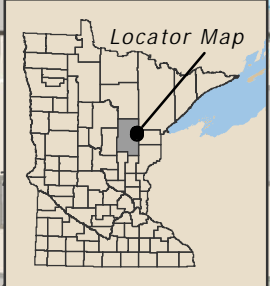
Map Symbols

- Proposed Drilling Areas: Borings, down-hole geophysics, & ground geophysics
- Proposed access trails, which in wet areas will have mats made of composite materials to minimize the creation of ruts.
- State Leases for Nonferrous Metallic Minerals**
- Active Lease for this Exploration Plan: Kennecott Exploration Co., Labeled by Mineral Lease (e.g. MM-9765-P)
- Other Active Leases
- Exclusionary Features at this map extent**
- The beds of lakes in the DNR's Public Waters Inventory
- The beds of major or significant rivers in DNR's Public Waters Inventory
- Special Features at this map extent**
- Wildlife Management Area (WMA)
- Natural Heritage Features and Historic or Archaeologic Sites are not shown because they are non-public data.*
- Other symbols**
- Township and Range Boundaries
- Political Township Boundaries
- Section Boundaries
- Municipal Boundaries
- State Highway
- County Roads
- Other Roads (Township, Muni, Forest)

0 0.5 1 2 Miles Scale 1:63,360



See page 2 for more detailed map



*Detailed Map for Kennecott Exploration Plan, page 2
DNR Submittal Plan Date: 7/3/2014*

Purpose: The locations of proposed exploration activities by state mineral lessees are shown in a standard format and legend. Map by DNR, Lands and Minerals Division, July 2014.

Date Proposal Submitted to DNR: July 3, 2014

Lessee: Kennecott Exploration Company

Lessee Contact Person: John Storie: (218) 768-3292 or john.storie@riotinto.com

State Mineral Lease Numbers: MM-9765-P, MM-9766-P, MM-10007-N

Location on Public Land Survey: T48N-R22W Sections 3 and 10 and T49N-R22W Section 27, Aitkin County

Types of Activity: Exploratory boring, down-hole geophysics and ground geophysical surveys




Time period for activity: July 28, 2014 to December 31, 2014.

New Access Trail Location: Yes, see map.


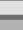
Narrative: The explorer has proposed to drill approximately 10 to 25 exploratory borings. The explorer has also proposed to conduct geophysical surveys in the bore holes and on the ground. The explorer has agreements or leases for the surface and mineral ownership on the parcels involved.

Map Symbols

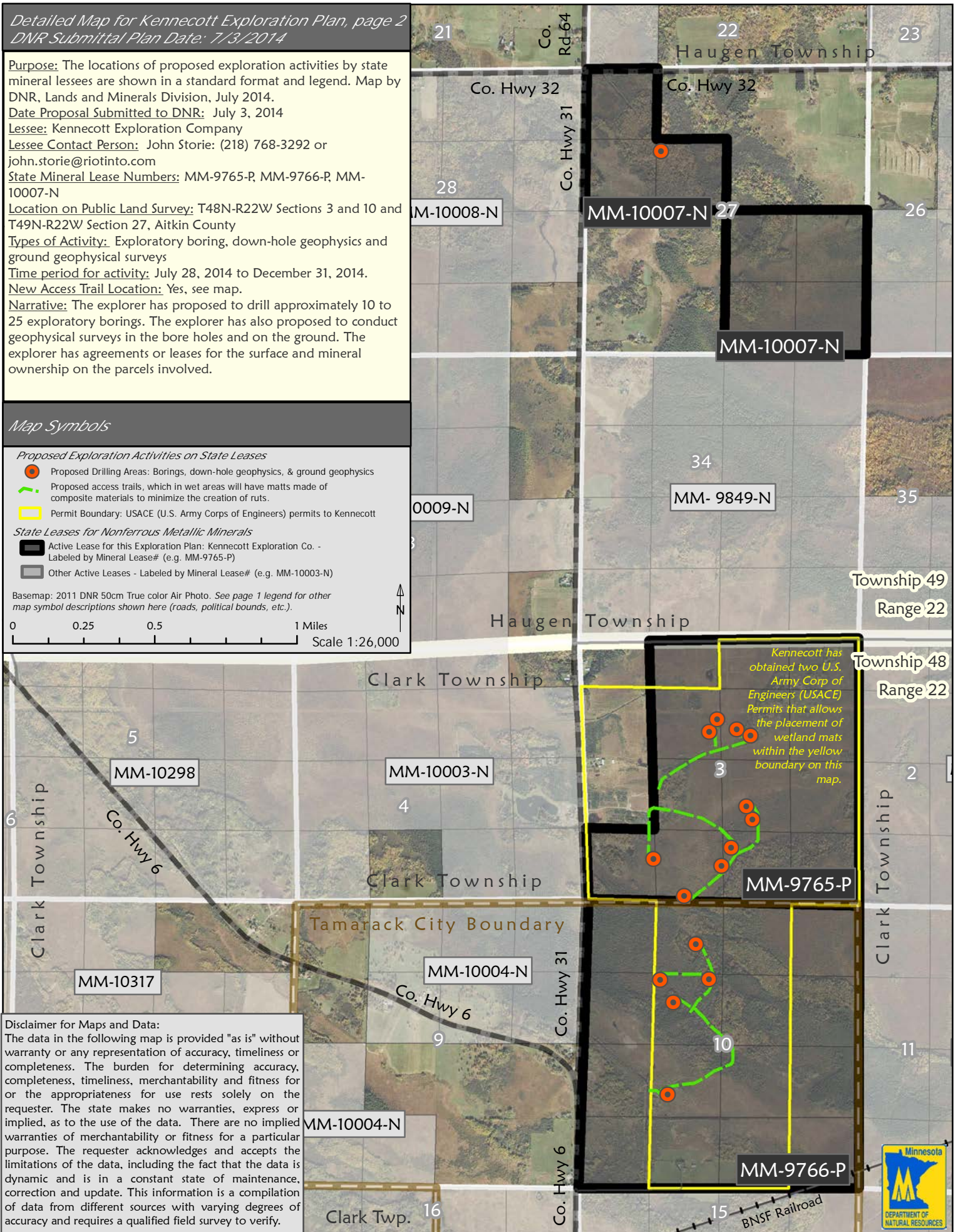
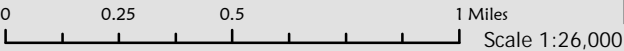
Proposed Exploration Activities on State Leases

-  Proposed Drilling Areas: Borings, down-hole geophysics, & ground geophysics
-  Proposed access trails, which in wet areas will have mats made of composite materials to minimize the creation of ruts.
-  Permit Boundary: USACE (U.S. Army Corps of Engineers) permits to Kennecott

State Leases for Nonferrous Metallic Minerals

-  Active Lease for this Exploration Plan: Kennecott Exploration Co. - Labeled by Mineral Lease# (e.g. MM-9765-P)
-  Other Active Leases - Labeled by Mineral Lease# (e.g. MM-10003-N)

Basemap: 2011 DNR 50cm True color Air Photo. See page 1 legend for other map symbol descriptions shown here (roads, political bounds, etc.).



Disclaimer for Maps and Data:
The data in the following map is provided "as is" without warranty or any representation of accuracy, timeliness or completeness. The burden for determining accuracy, completeness, timeliness, merchantability and fitness for or the appropriateness for use rests solely on the requester. The state makes no warranties, express or implied, as to the use of the data. There are no implied warranties of merchantability or fitness for a particular purpose. The requester acknowledges and accepts the limitations of the data, including the fact that the data is dynamic and is in a constant state of maintenance, correction and update. This information is a compilation of data from different sources with varying degrees of accuracy and requires a qualified field survey to verify.

