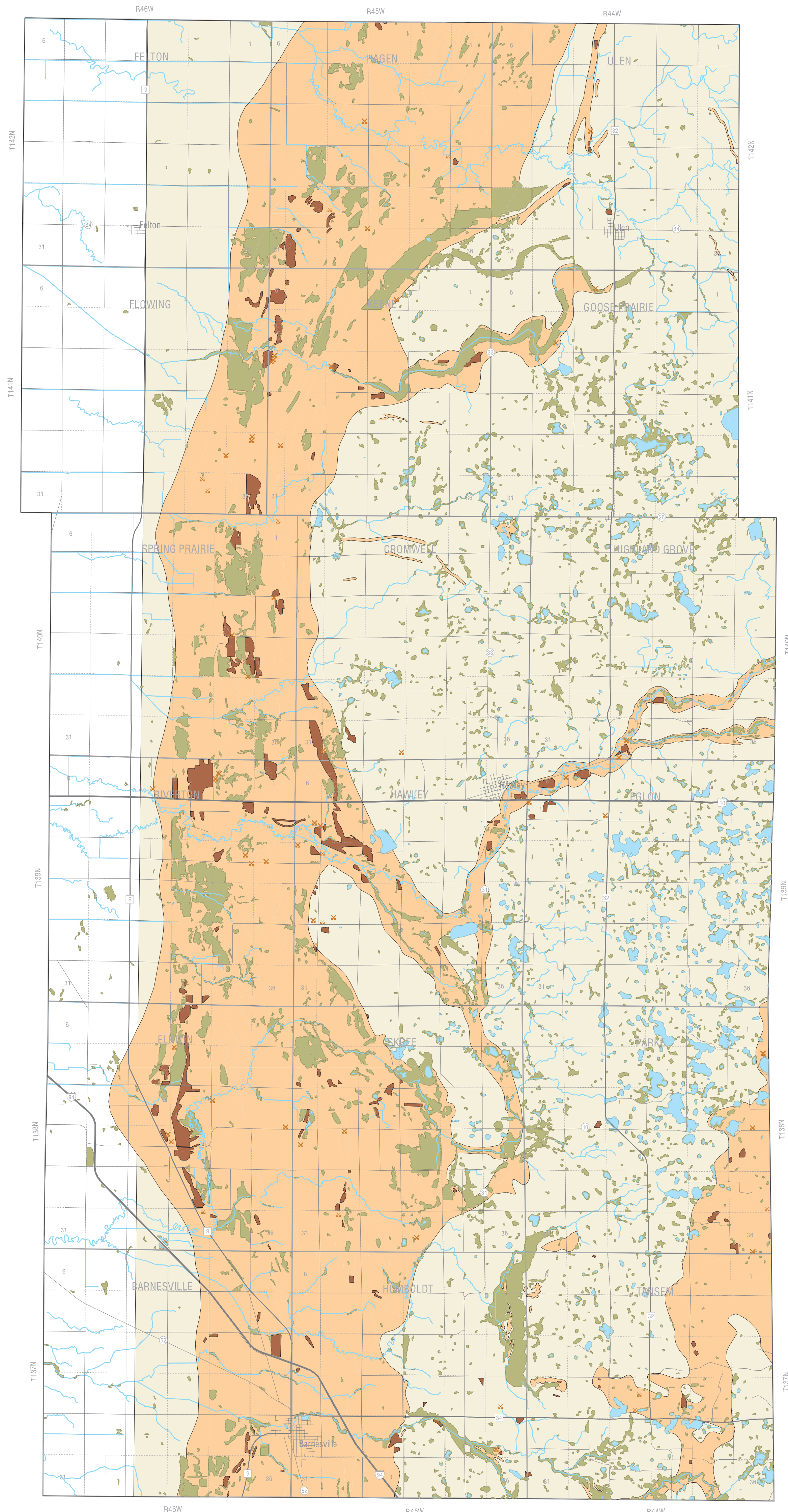
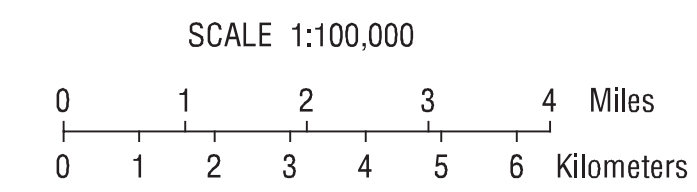


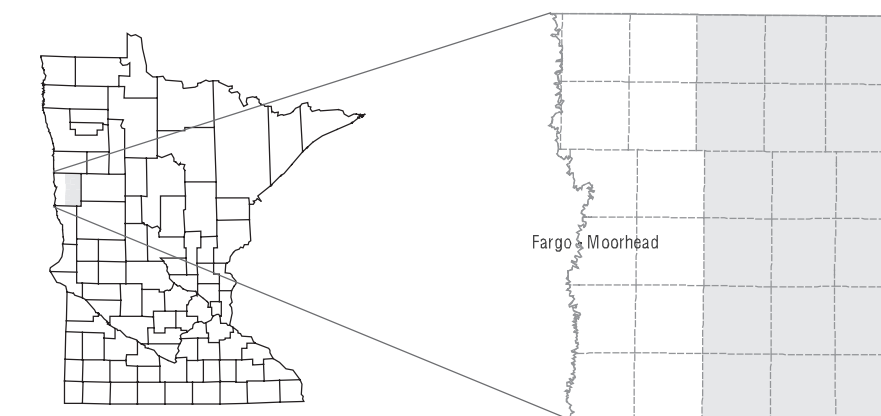
AGGREGATE RESOURCES EASTERN CLAY COUNTY, MINNESOTA



- POTENTIAL AGGREGATE RESOURCES:** Those geologic units that are inferred to contain potentially significant aggregate deposits. Gravel pit symbols indicate identified resources. The geologic units having potential for aggregate resources include terrace outwash, outwash, collapsed outwash, and ice-contact deposits.
- LIMITED POTENTIAL FOR AGGREGATE RESOURCES:** Those geologic units that generally have little or no potential for aggregate resources. In places, includes aggregate deposits either too small or extremely difficult to map.
- GRAVEL PIT:** area of pit delineated from interpretation of aerial photographs.
- GRAVEL PIT:** pit identified by field work. Area of pit not delineated because the pit was not visible on the aerial photographs.
- GRAVEL PIT:** pit identified on 1:24000 USGS topographic maps and not a part of pits delineated from interpretation of aerial photographs.
- WETLAND:** wetland area, not including open water lakes or rivers.
- WATER:** Lake or river.
- UNMAPPED AREA:** aggregate potential not mapped in this part of the study area.



(Aggregate resource mapping units were delineated at 1:50,000)



Base map: Roads, lakes, and rivers from State of Minnesota Basemap, CD-ROM produced by Minnesota Department of Transportation Surveying and Mapping BaseMap Development Group.
 Public Land Survey - PLS Project, Minnesota Department of Natural Resources, Division of Minerals.
 Wetlands from National Wetland Inventory, U.S. Fish and Wildlife Service, compiled at 1:24000 from aerial photography (1979-1988) and spot field checking.

Aggregate Resources: Interpretation of NAPP photography (National Aerial Photography Program, 1991-1992, 10"x10" color infrared photos at 1:40000), field work, and delineation by J.D. Lehr, 1994-1996.
 Aggregate Mapping Program, Minnesota Department of Natural Resources, Division of Minerals.