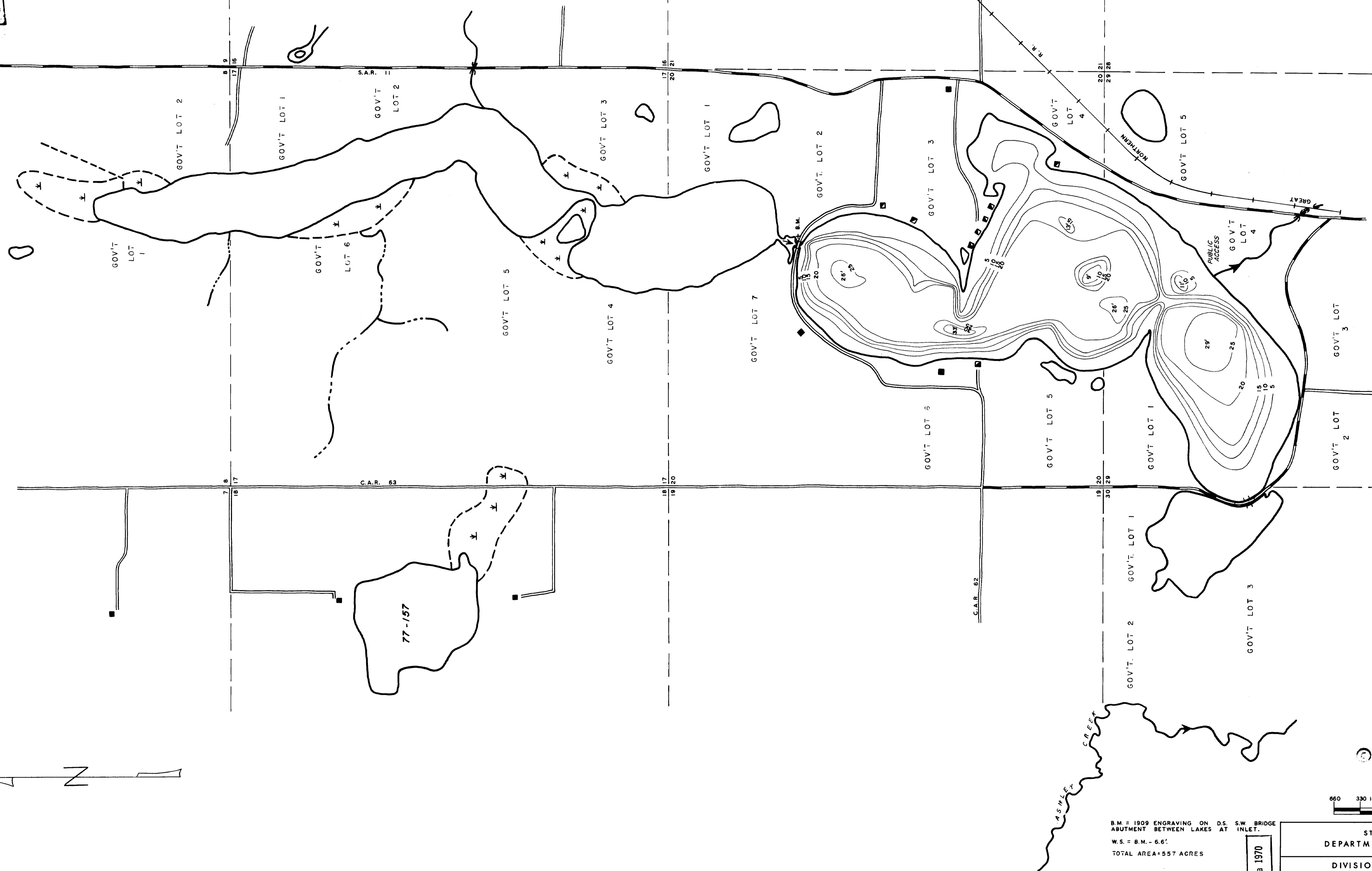
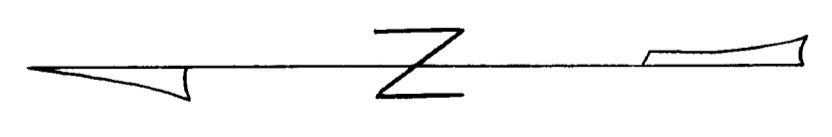


THIS MAP IS THE PROPERTY OF THE STATE OF MINNESOTA
 AND IS LOANED TO YOU FOR YOUR INFORMATION ONLY.
 IT IS NOT TO BE REPRODUCED OR TRANSMITTED IN ANY FORM OR BY ANY MEANS, ELECTRONIC OR MECHANICAL, INCLUDING PHOTOCOPYING, RECORDING, OR BY ANY INFORMATION STORAGE AND RETRIEVAL SYSTEM, WITHOUT THE WRITTEN PERMISSION OF THE STATE OF MINNESOTA.



B.M. = 1909 ENGRAVING ON D.S. S.W. BRIDGE
 ABUTMENT BETWEEN LAKES AT INLET.
 W.S. = B.M. - 6.6'
 TOTAL AREA = 557 ACRES

REVISED 2-1-68 D.B.D.

DRAWING FILE NO. 10000

OUTLINE TRACED FROM 1953 AERIAL PHOTO.

COPYRIGHT 1983
 STATE OF MINNESOTA
 DEPARTMENT OF NATURAL RESOURCES
 DIVISION OF GAME AND FISH AND WILDLIFE



STATE OF MINNESOTA DEPARTMENT OF CONSERVATION		
DIVISION OF GAME AND FISH BUREAU OF RESEARCH AND PLANNING		
FAIRY LAKE 77-154 TODD COUNTY		
TWP. 127 N.	R. 34 W.	SEC. 20-29-30
FIELDWORK G. L. DATE 8-16-56	DRAWN BY D.G.L. DATE 3-26-57	PROJ. IDENT. NO. D.J. FW-1-R-1

State of Minnesota 1970