

N

LEGEND

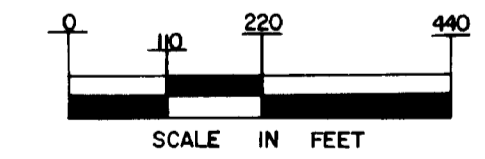
- TOWNSHIP LINE ————
- SECTION LINE ————
- SECTION NUMBER 5
- INTERMITTENT STREAM - - - - -
- BRUSH SWAMP —▲—▲—▲—
- PORTAGE TRAIL - - - - -
- BEAVER LODGE *
- BENCHMARK (B.M.) ⊕

- PLANIMETERED AREA- 16.6 ACRES
- LITTORAL AREA- 16.6 ACRES
- LENGTH OF SHORELINE- .75 MILES

B.M.#1- SPIKE IN 14" D.B.H. BLACK SPRUCE, 6' FROM WATER'S EDGE AT PORTAGE TRAIL FROM PIPE LAKE. W.S.E. WAS 4.0' BELOW B.M.#1.

LAKE OUTLINE DRAWN FROM 1961 AERIAL PHOTO # DGK-17A-165.

© COPYRIGHT 1993
STATE OF MINNESOTA
DEPARTMENT OF NATURAL RESOURCES
DIVISION OF FISH AND WILDLIFE



FINANCED WITH AID OF DINGELL-JOHNSON FUNDS

STATE OF MINNESOTA DEPARTMENT OF NATURAL RESOURCES		
DIVISION OF GAME AND FISH TECHNICAL SERVICES SECTION		
WEST PIPE (MULLIGAN) LAKE (16-387) COOK COUNTY		
T. 62, 63 N.	R. 3 W.	S. 5, 32.
FIELDWORK D.J.S. & L.V.D. DATE 9-21-74	DRAWN BY R.W.L. DATE 1-13-76	PROJ. IDENT. NO. FW-1-R-19

STATE OF MINNESOTA
Department of Administration
Minnesota's Bookstore
Part of the Department of Administration
Print Communications Division
To order reproduced copies of
Contour Lake Maps call:
612/297-3000 or our
Nationwide toll-free number
1-800-657-3757

