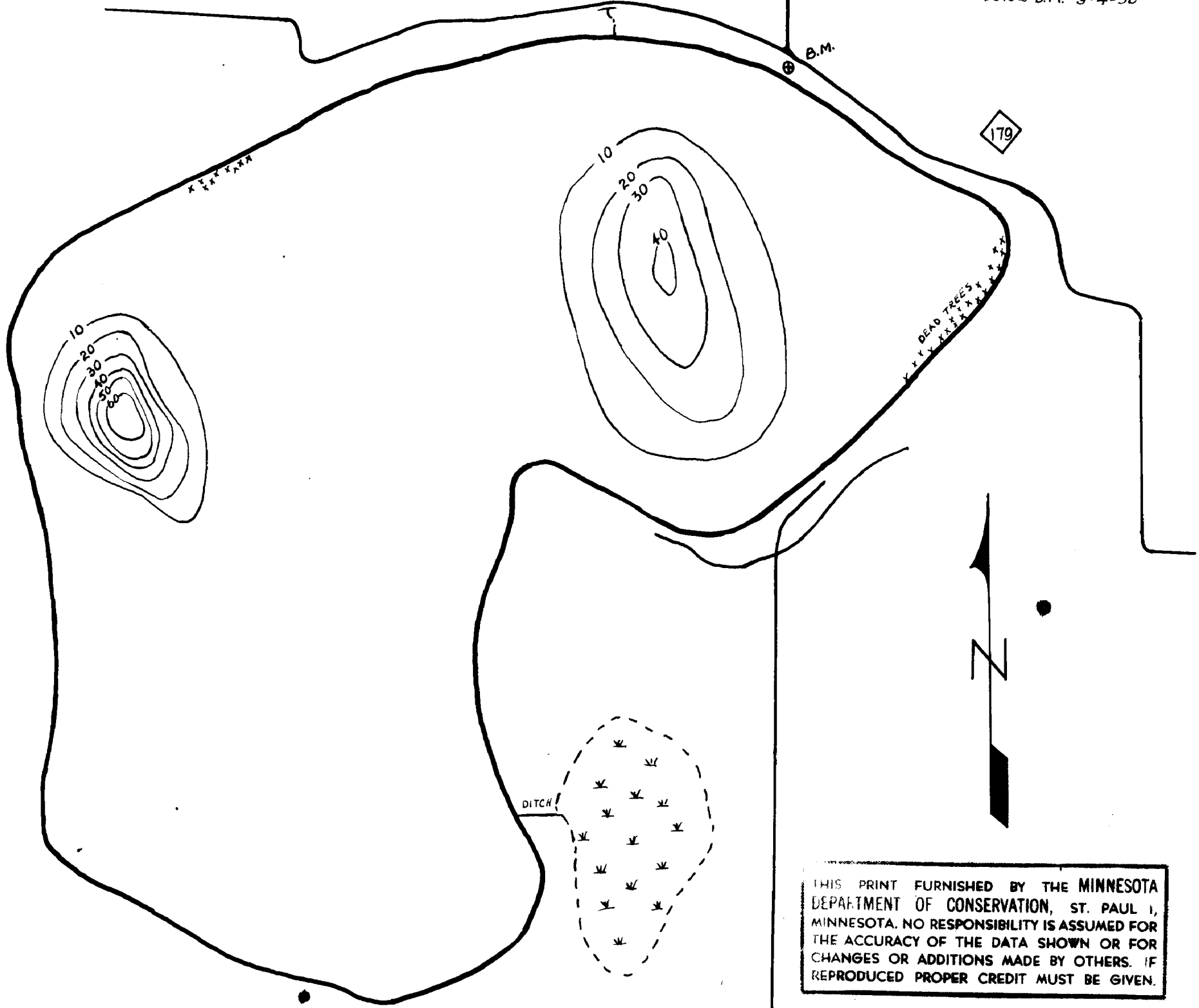


© COPYRIGHT 1983
STATE OF MINNESOTA
DEPARTMENT OF NATURAL RESOURCES
DIVISION OF FISH AND WILDLIFE

NOTE: B.M. reading from 2,40 d.
nails at base of power line pole.
LEVEL: 7'5" below B.M. 9-4-50

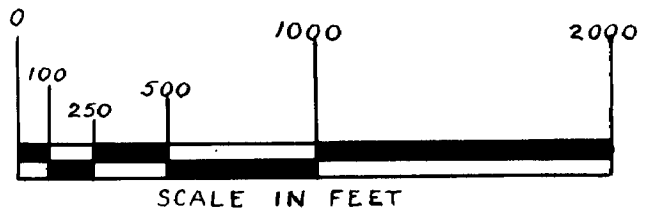


THIS PRINT FURNISHED BY THE MINNESOTA
DEPARTMENT OF CONSERVATION, ST. PAUL 1,
MINNESOTA. NO RESPONSIBILITY IS ASSUMED FOR
THE ACCURACY OF THE DATA SHOWN OR FOR
CHANGES OR ADDITIONS MADE BY OTHERS. IF
REPRODUCED PROPER CREDIT MUST BE GIVEN.

D.O.W. - 346 ACRES

20

© State of Minnesota 1964



D.O.W.
FILE
NO. 20

7-54

STATE OF MINNESOTA
DIVISION OF GAME & FISH
FISHERIES RESEARCH UNIT
BALLANTYNE LAKE
T. 109 R. 25 S. 27, 28, 33
BLUE EARTH COUNTY
FIELD WORK: 9-4-50 DRAWN BY: W.J.S.