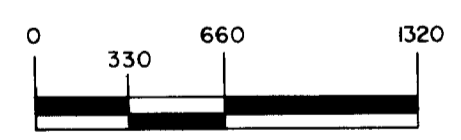


LEGEND

- BITUMINOUS ROAD
- GRAVEL ROAD
- TRAIL
- MARSH
- EMERGENT VEGETATION *EMG. VEG.*
- COUNTY HIGHWAY
- PLANIMETERED AREA = 706 ACRES
- LITTORAL AREA = 706 ACRES
- LENGTH OF SHORELINE = 9.5 MILES

B.M.#1 = BRASS CAP B.M. SET BY DEPT. OF HIGHWAYS 50' FROM SHORE AT EDGE OF PARKING AREA OF PUBLIC ACCESS ON EAST END OF LAKE
 W.S.E. = 8.6' BELOW B.M.#1

B.M.#2 = SPIKE IN FOUR-TRUNKED ELM ON POINT AT N. E. END OF LAKE 5' FROM SHORE
 W.S.E. = 2.9' BELOW B.M.#2



OUTLINE DRAWN FROM 1963 AERIAL PHOTOS - BIZ - 2DD - 136
 BIZ - 4DD - 44

© COPYRIGHT 1993
 STATE OF MINNESOTA
 DEPARTMENT OF NATURAL RESOURCES
 DIVISION OF FISH AND WILDLIFE

STATE OF MINNESOTA
 Department of Administration
Minnesota's Bookstore
 Part of the Department of Administration
 Print Communications Division
 To order reproduced copies of Contour Lake Maps call:
 612/297-3000 or our
 Nationwide toll-free number
 1-800-657-3757

STATE OF MINNESOTA DEPARTMENT OF NATURAL RESOURCES		
DIVISION OF GAME AND FISH TECHNICAL SERVICES SECTION		
EAST (SOUTH) SOLOMON 34 - 246 KANDIYOHI COUNTY		
T 120	R 35,36	S 20,21,28-30; 25
FIELDWORK FHK B RAB	DRAWN BY GMS	PROJ. IDENT. NO.
DATE 7/1/71	DATE 12/20/71	FW-1-R 16