

**LEGEND**

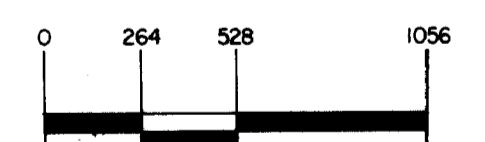
- STREAM
- INTERMITTENT STREAM
- MARSH AREA
- WOODED OR BRUSH SWAMP
- OPEN WATER *O.W.*
- CAMPSITE
- PORTAGE

PLANIMETERED AREA = 313.0 ACRES  
 LITTORAL AREA = 161.3 ACRES  
 LENGTH OF SHORELINE = 6.15 MILES  
 ISLANDS' SHORELINE = 0.15 MILE

B.M. #1 = TOP OF 20' x 15' x 9.4' ROCK IN WATER  
 50' FROM WATER'S EDGE ON SOUTH-  
 WEST SIDE OF LAKE.  
 W.S.E. = 9.4' BELOW B.M. #1.

B.M. #2 = TOP OF STEEL SPIKE IN JACKPINE ON  
 POINT ON NORTH SIDE OF LAKE 10'  
 FROM WATER'S EDGE.  
 W.S.E. = 4.0 FEET BELOW B.M. #2.

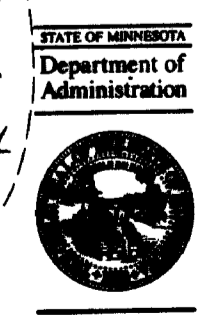
OUTLINE DRAWN FROM 1961 AERIAL PHOTO  
 CIR-26A-126.



© COPYRIGHT 1993 SCALE IN FEET  
 STATE OF MINNESOTA  
 DEPARTMENT OF NATURAL RESOURCES  
 DIVISION OF FISH AND WILDLIFE

ENTIRE MAP AREA LOCATED  
 IN  
 BOUNDARY WATERS CANOE AREA  
 AND  
 SUPERIOR NATIONAL FOREST

FOURTOWN  
 LAKE 38-813



Minnesota's Bookstore  
 Part of the Department of Administration  
 Print Communications Division  
 To order reproduced copies  
 Contour Lake Maps call:  
 612/297-3000 or our  
 Nationwide toll-free number  
 1-800-657-3767

STATE OF MINNESOTA DEPARTMENT OF CONSERVATION		
DIVISION OF GAME AND FISH TECHNICAL SERVICES SECTION		
BOOT LAKE 69-100 ST. LOUIS COUNTY		
T. 65 N.	R. 12 W.	S. 23, 25, 26
FIELDWORK C.M.H. B.F.H.K.	DRAWN BY C.M.H.	PROJ. IDENT. NO. F.W.1-R-15
DATE 10-20-70	DATE 1-11-71	