



LEGEND

- BITUMINOUS ROAD
- GRAVEL ROAD
- STATE HIGHWAY
- COUNTY ROAD
- MARSH
- STREAM

PLANIMETERED AREA 168 ACRES
 LITTORAL AREA 82 ACRES
 MILES OF SHORELINE 2.3 MILES

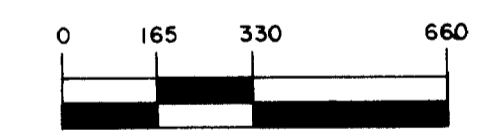
B.M. #1 = SPIKE IN 14" D.B.H. WHITE PINE, 10'
 FROM POSTS ALONG WEST BORDER OF BEACH
 AREA AND 10' FROM WATER'S EDGE ON
 SOUTHWEST SIDE OF LAKE.

W.S.ELEV. = 4.5' BELOW B.M. #1.

B.M. #2 = TOP OF EAST C.M.C. AT CONNECTING
 BOG AREA ON NORTH SIDE OF LAKE.

W.S.ELEV. = 2.1' BELOW B.M. #2.

OUTLINE DRAWN FROM 1963 AERIAL PHOTO
 # BYA - 6DD - 39.



SCALE IN FEET
 © COPYRIGHT 1993
 STATE OF MINNESOTA
 DEPARTMENT OF NATURAL RESOURCES
 DIVISION OF GAME AND FISH

STATE OF MINNESOTA
 DEPARTMENT OF CONSERVATION

DIVISION OF GAME AND FISH
 TECHNICAL SERVICES SECTION

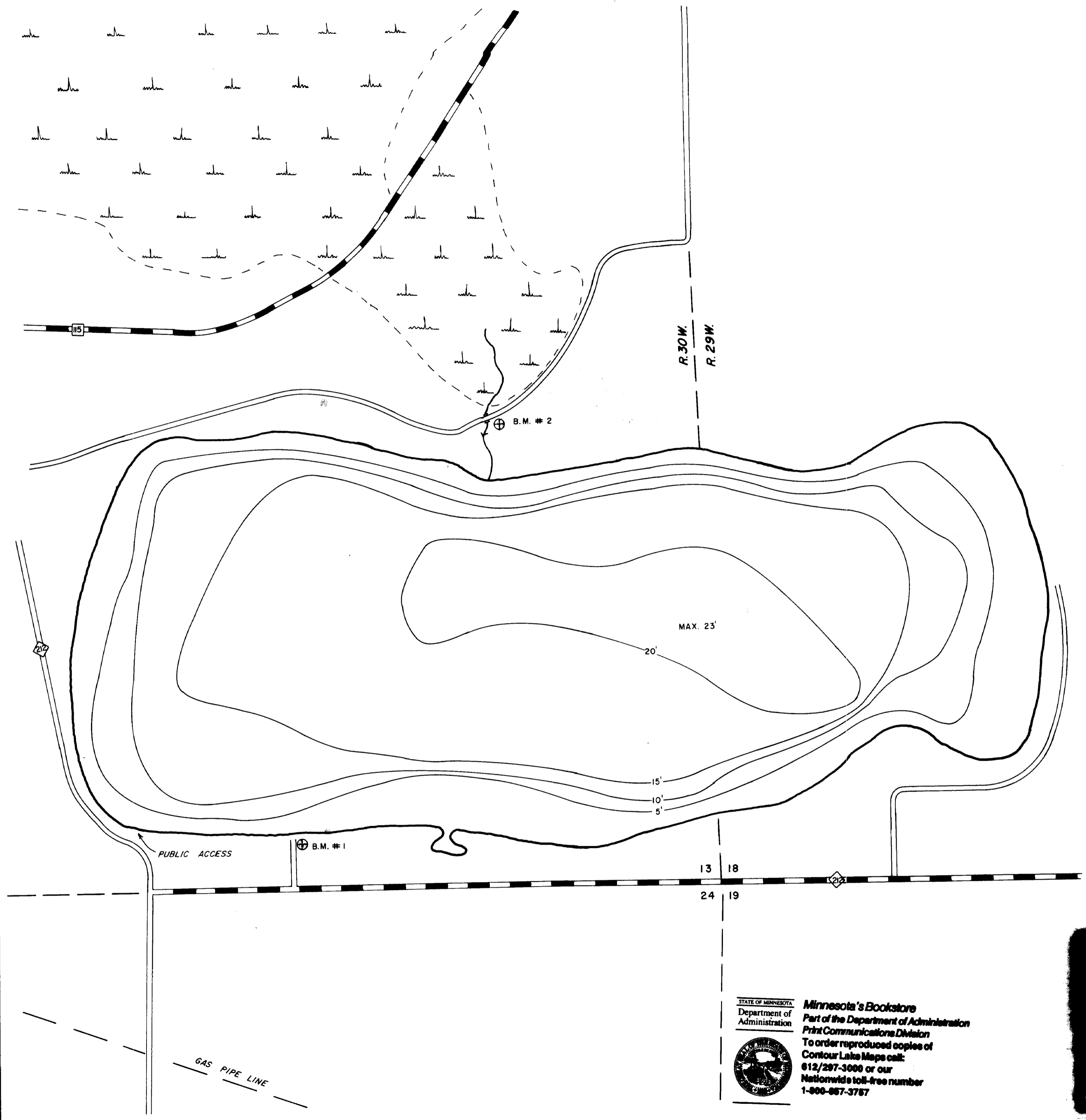
FISH (GREEN PRAIRIE FISH) LAKE 49-35
 MORRISON COUNTY

T. 130 N. R. 29, 30 W. S. 13, 18

FIELDWORK R.L.M., C.M.H.
 DATE 7/22/70

DRAWN BY F.H.K.
 DATE 11/16/70

PROJ. IDENT. NO.
 F.W.1-R-15



STATE OF MINNESOTA
 Department of
 Administration
Minnesota's Bookstore
 Part of the Department of Administration
 Print Communications Division
 To order reproduced copies of
 Contour Lake Maps call:
 612/297-3000 or our
 Nationwide toll-free number
 1-800-657-3757

