

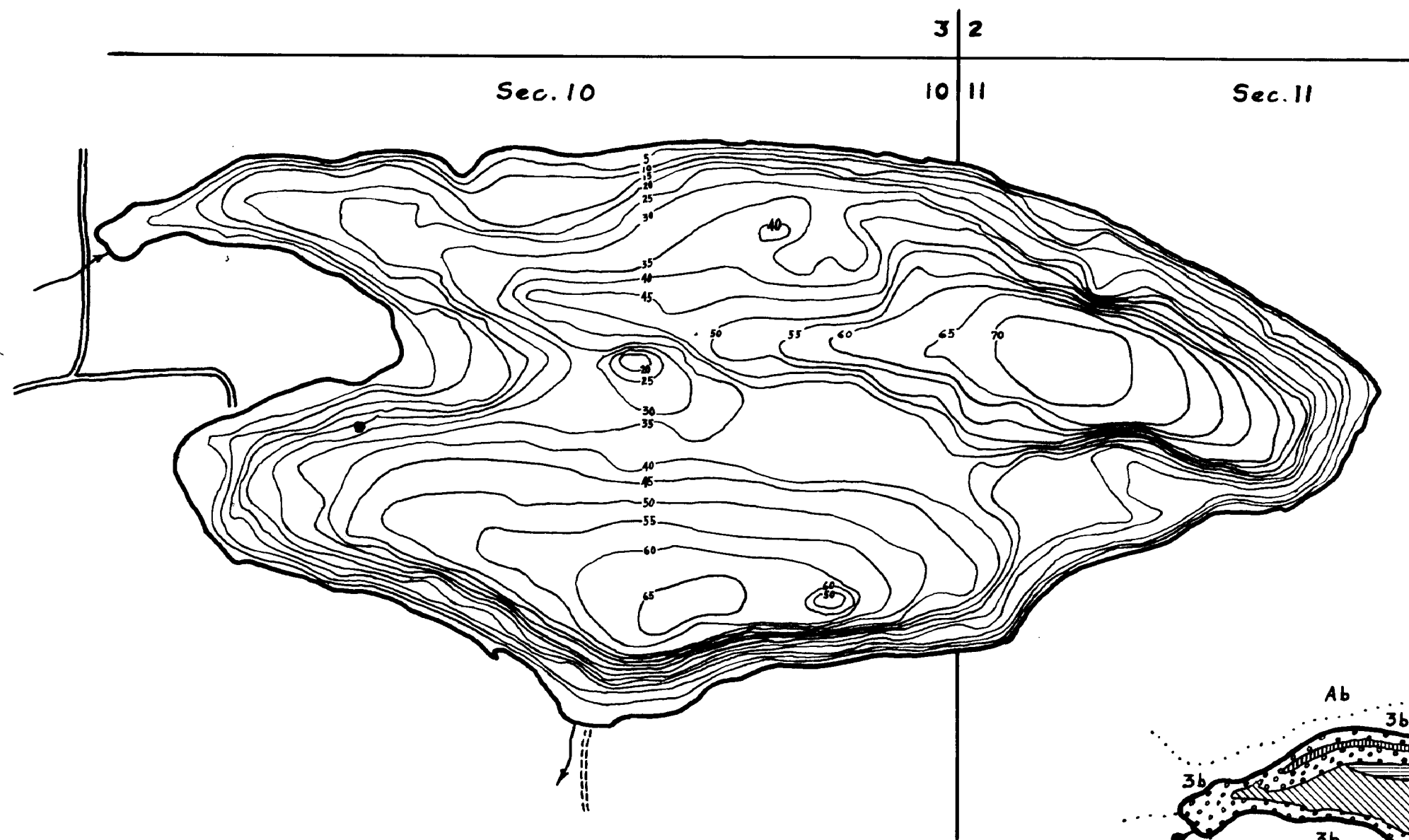
THIS PRINT FURNISHED BY THE MINNESOTA DEPARTMENT OF CONSERVATION, ST. PAUL 1, MINNESOTA. NO RESPONSIBILITY IS ASSUMED FOR THE ACCURACY OF THE DATA SHOWN OR FOR CHANGES OR ADJUSTMENTS MADE BY OTHERS. IF REPRODUCED PROPER CREDIT MUST BE GIVEN.

R-9  
U.S. Department of Agriculture  
Forest Service  
LAKE AND STREAM SURVEY  
TROUT LAKE  
Superior National Forest  
Minnesota

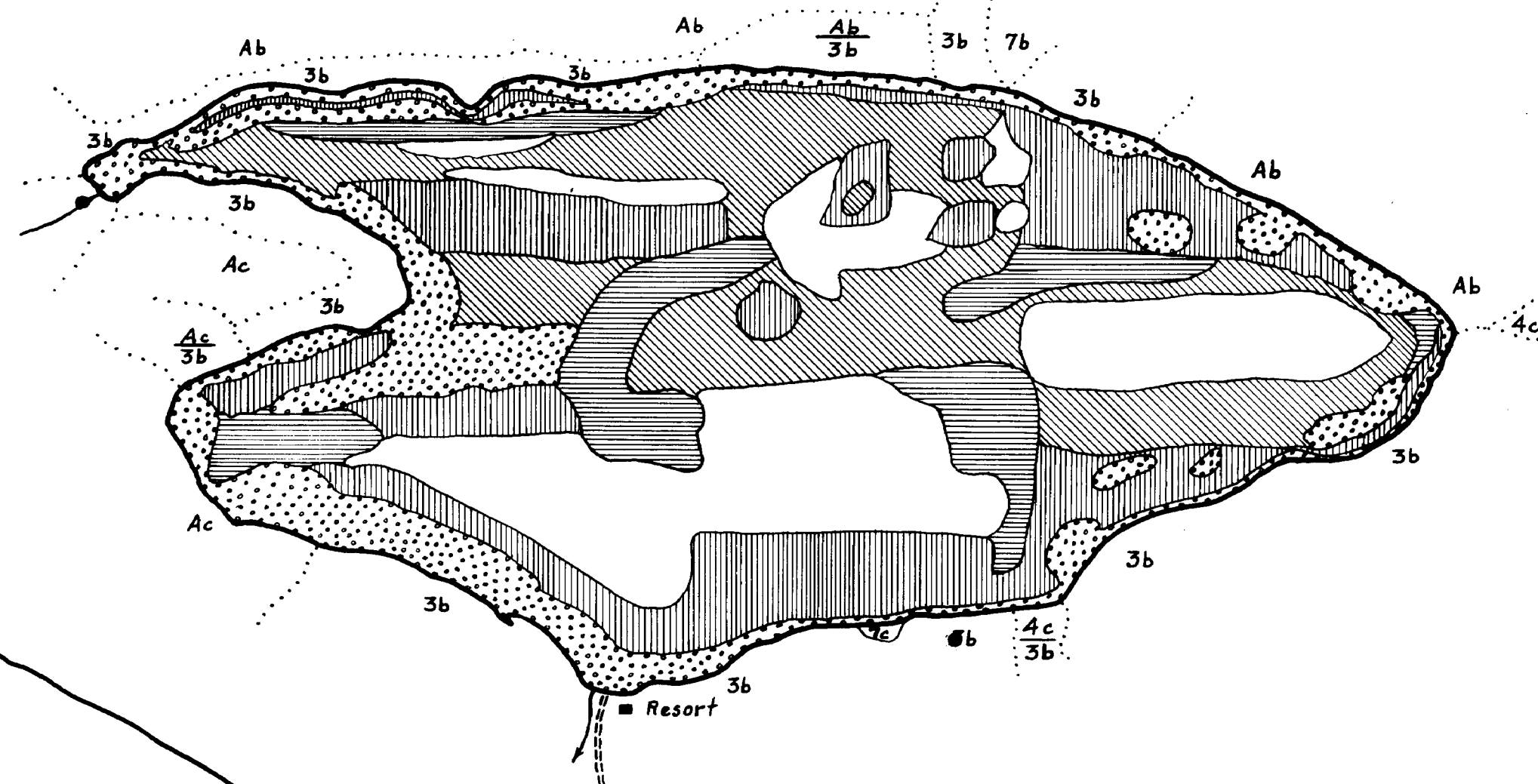
Copyright 1990  
STATE OF MINNESOTA  
DEPARTMENT OF NATURAL RESOURCES  
DIVISION OF FISH AND WILDLIFE

Location: Sec. 10-11 T. 62 N. R. 2 E.  
Scale: 8 Inches = 1 Mile

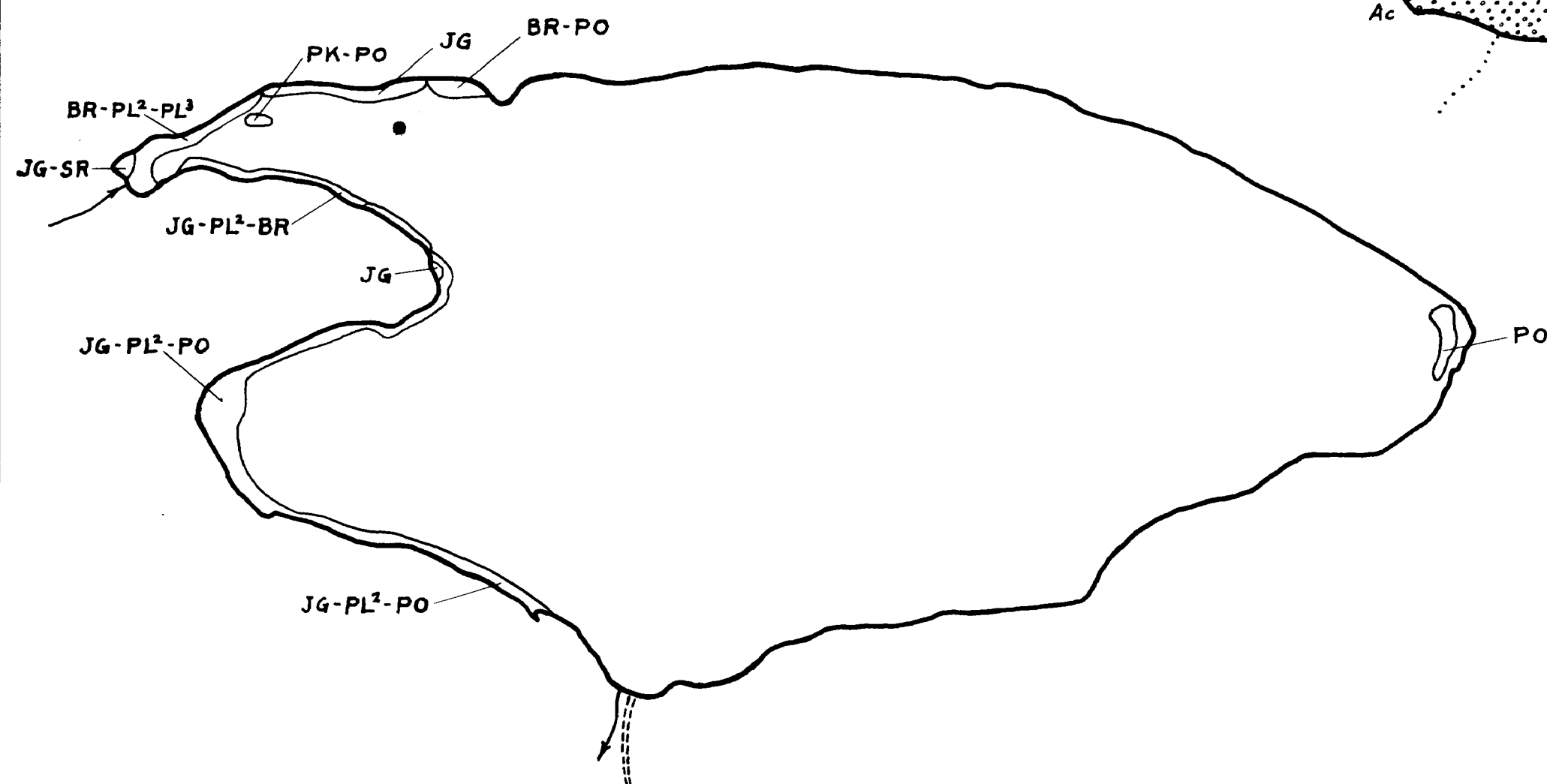
Area: 256.6 Acres  
Length of Shoreline: 3.19 Miles



Contour Map  
Contour Interval-5'



Cover Type and  
Lake Bottom Soil Type Map



Aquatic Vegetation Map

Handwritten notes and markings on the left margin.