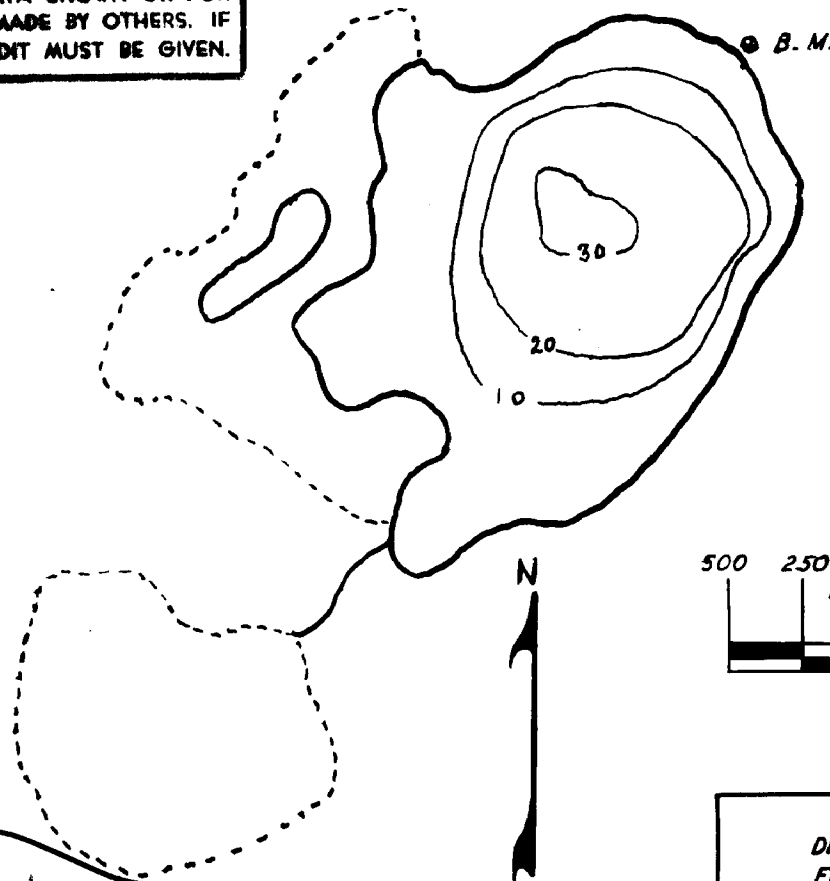


B.M.: SPIKE IN BASE OF PINE TREE 15"
8'6" ABOVE WATER LEVEL

5-24-49

© COPYRIGHT 1938
STATE OF MINNESOTA
DEPARTMENT OF NATURAL RESOURCES
DIVISION OF FISH AND GAME

THIS PRINT FURNISHED BY THE MINNESOTA
DEPARTMENT OF CONSERVATION, ST. PAUL 1,
MINNESOTA. NO RESPONSIBILITY IS ASSUMED FOR
THE ACCURACY OF THE DATA SHOWN OR FOR
CHANGES OR ADDITIONS MADE BY OTHERS. IF
REPRODUCED PROPER CREDIT MUST BE GIVEN.



500 250 150 0 500 1000
SCALE IN FEET

D.O.W.
FILE
NO.

19

STATE OF MINNESOTA
DIVISION OF GAME & FISH
FISHERIES RESEARCH UNIT
FAWN LAKE
T. 34 R. 22 S. 26
ANOKA CO.
FIELD WORK 5-24-49 DRAWN BY L.B.