
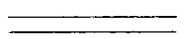

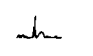




N

LEGEND

- BITUMINOUS ROAD 
- GRAVEL ROAD 
- COUNTY ROAD 
- MARSH 
- EMERGENT VEGETATION 
- SUBMERGED VEGETATION 
- PLANIMETERED AREA = 309 ACRES
- LITTORAL AREA = 185 ACRES
- LENGTH OF SHORELINE = 4.4 MILES

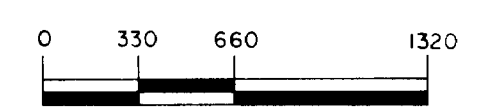
B.M. #1 = TOP OF STEEL STAKE 30' FROM SHORE, AT BASE OF 4" DB.H. PINE, IN N.E. CORNER OF LAKE, ALONG S. BORDER OF E. SWANSON'S CLEARING. (1966 B.M.)

W.S. ELEV. = 5.2' BELOW B.M. #1

B.M. #2 = TOP OF STEEL STAKE ON E. END OF WOODEN FENCE, 40' FROM SHORE AND 15' FROM COUNTY ROAD #9, ON N. SIDE OF LAKE.

W.S. ELEV. = 6.1' BELOW B.M. #2

OUTLINE DRAWN FROM 1955 AERIAL PHOTO # CWC-2-65.



SCALE IN FEET

© COPYRIGHT 1993  
 STATE OF MINNESOTA  
 DEPARTMENT OF NATURAL RESOURCES  
 DIVISION OF FISH AND WILDLIFE

STATE OF MINNESOTA  
 DEPARTMENT OF NATURAL RESOURCES

DIVISION OF GAME AND FISH  
 TECHNICAL SERVICES SECTION

**BASS LAKE 18-256**  
 CROW WING COUNTY

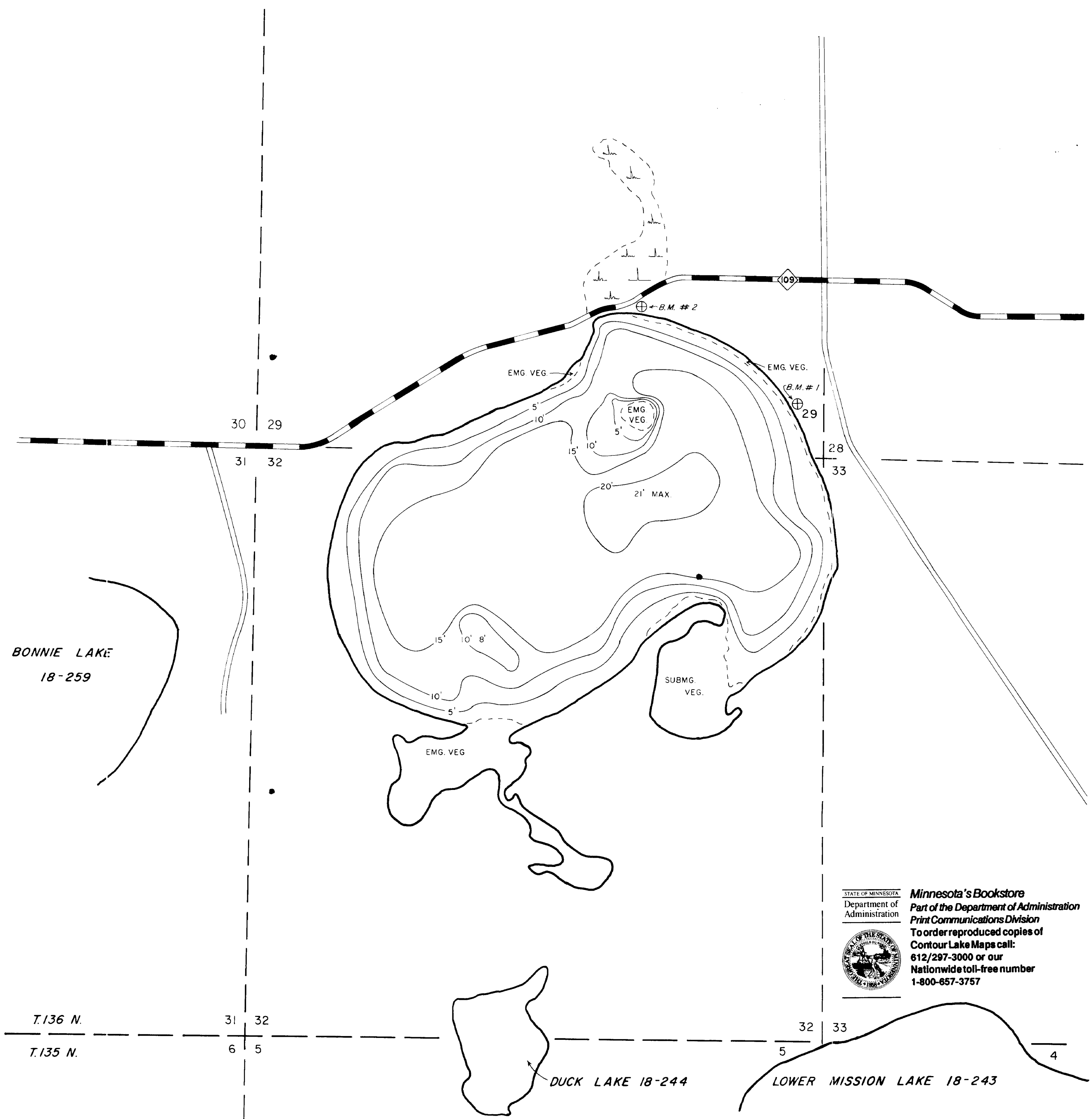
T. 136 N. R. 27 W. S. 29, 32, 33

FIELDWORK C.M.H., R.L.M.  
 DATE 7/14/71

DRAWN BY R.L.M.  
 DATE 1/11/72

PROJ. IDENT. NO.  
 FW 1 P-16

STATE OF MINNESOTA  
 Department of Administration  
 Minnesota's Bookstore  
 Part of the Department of Administration  
 Print Communications Division  
 To order reproduced copies of  
 Contour Lake Maps call:  
 612/297-3000 or our  
 Nationwide toll-free number  
 1-800-657-3757



BONNIE LAKE  
 18-259

DUCK LAKE 18-244

LOWER MISSION LAKE 18-243