

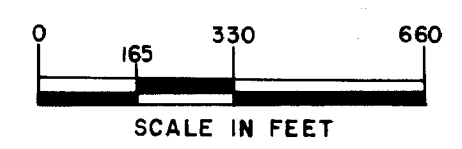
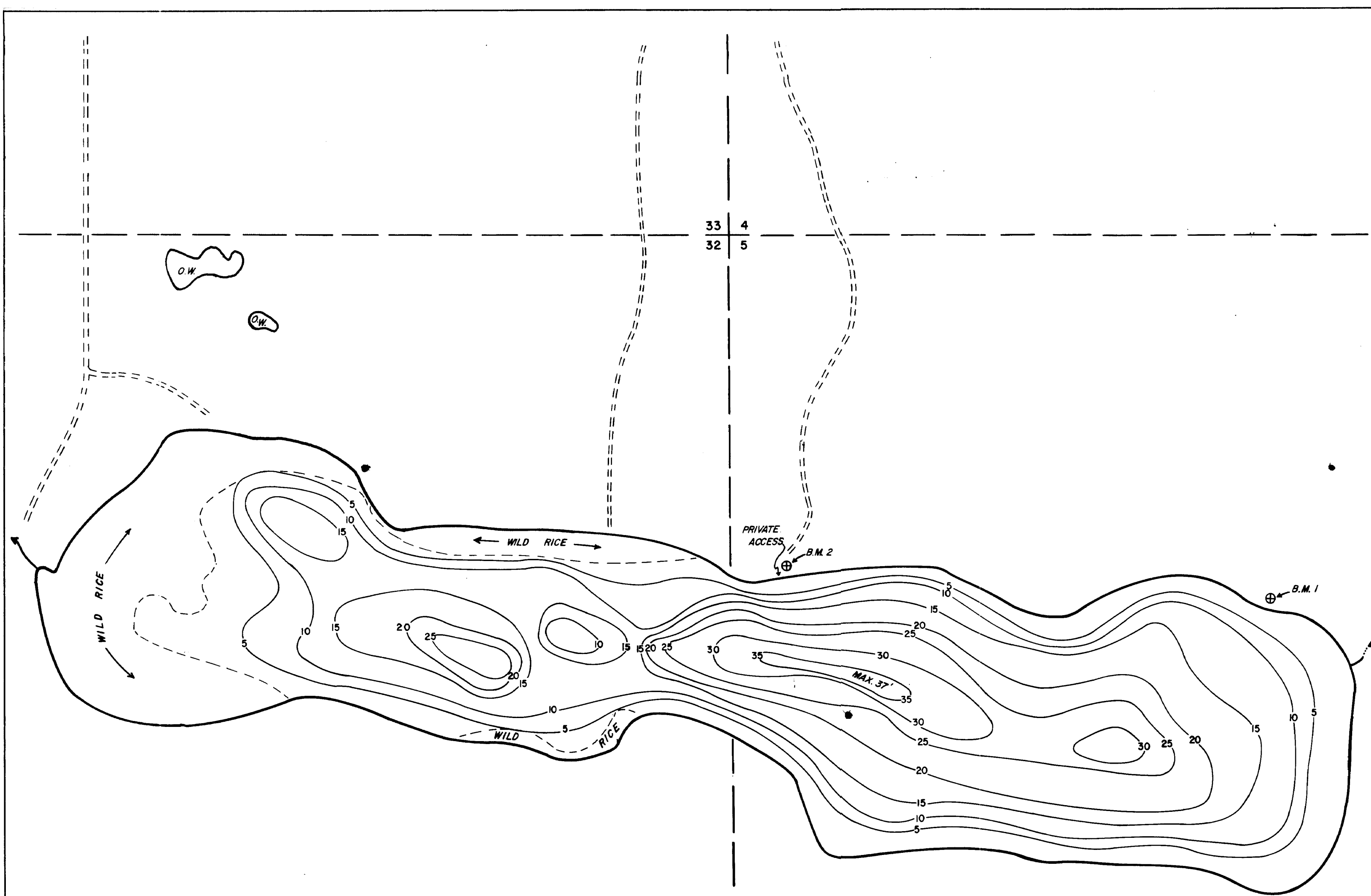
LEGEND

- UNIMPROVED ROAD = = = = =
- STREAM ~~~~~
- INTERMITTENT STREAM - - - - -
- OPEN WATER O.W.
- LITTORAL AREA 78 ACRES
- PLANIMETERED AREA 116 ACRES
- SHORELINE LENGTH 2.4 MILES

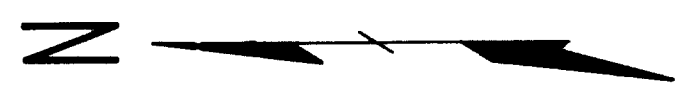
B.M. 1 = TOP OF CEMENT BLOCK HOLDING RAILING POLE CLOSEST TO WATER AT CABIN STEPS ON SOUTHEAST SIDE OF LAKE
 W.S. ELEV. = 10.9' BELOW B.M. 1

B.M. 2 = SPIKE IN SPRUCE TREE 70' FROM SHORE AT BOAT LANDING ON EAST SIDE OF LAKE
 W.S. ELEV. = 10.9' BELOW B.M. 2

OUTLINE DRAWN FROM 1966 & 1968 AERIAL PHOTOS # BXU-166-90, BLH-124.



© COPYRIGHT 1983
 STATE OF MINNESOTA
 DEPARTMENT OF NATURAL RESOURCES
 DIVISION OF FISH AND WILDLIFE



R. 143 N.
 R. 142 N.

STATE OF MINNESOTA
 Department of Administration
Minnesota's Bookstore
 Part of the Department of Administration
 Print Communications Division
 To order reproduced copies of
 Contour Lake Maps call:
 612/297-3000 or our
 Nationwide toll-free number
 1-800-657-3767



STATE OF MINNESOTA DEPARTMENT OF CONSERVATION		
DIVISION OF GAME AND FISH TECHNICAL SERVICES SECTION		
SCHOOLCRAFT LAKE (29-215) HUBBARD COUNTY		
T. 142, 143 R. 34 S. 5, 32		
FIELDWORK C.M.H. & F.H.K. DATE 8-4-70	DRAWN BY R.L.M. DATE 1-28-71	PROJ. IDENT. NO. FW-1-R-15