

61-91-9

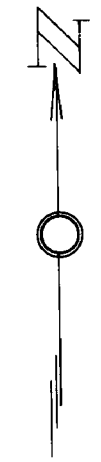
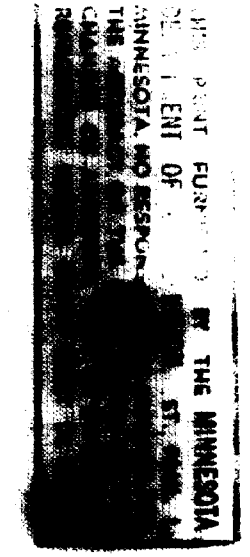
Sheet 3 of 3

© COPYRIGHT 1993  
STATE OF MINNESOTA  
DEPARTMENT OF NATURAL RESOURCES  
DIVISION OF FISH AND WILDLIFE

R-9  
U.S. Department of Agriculture  
Forest Service  
LAKE AND STREAM SURVEY  
**OYSTER LAKE**  
Superior National Forest  
Minnesota

Location Secs. 2-3-10-11 T. 66N. R. 14W.  
Scale 8 Inches = 1 Mile

Area 714.3 Acres  
Length of Shore Line 8.2 Miles



*Oyster Lake  
Aquatic Vegetation Map*

Aquatic Vegetation Map

G 843

J-16-19

6-4-87