

OYSTER LAKE 69-330

Location Sec. 2-3-10-11 T. 66 N. R. 14 W.
Scale 8 Inches = 1 Mile

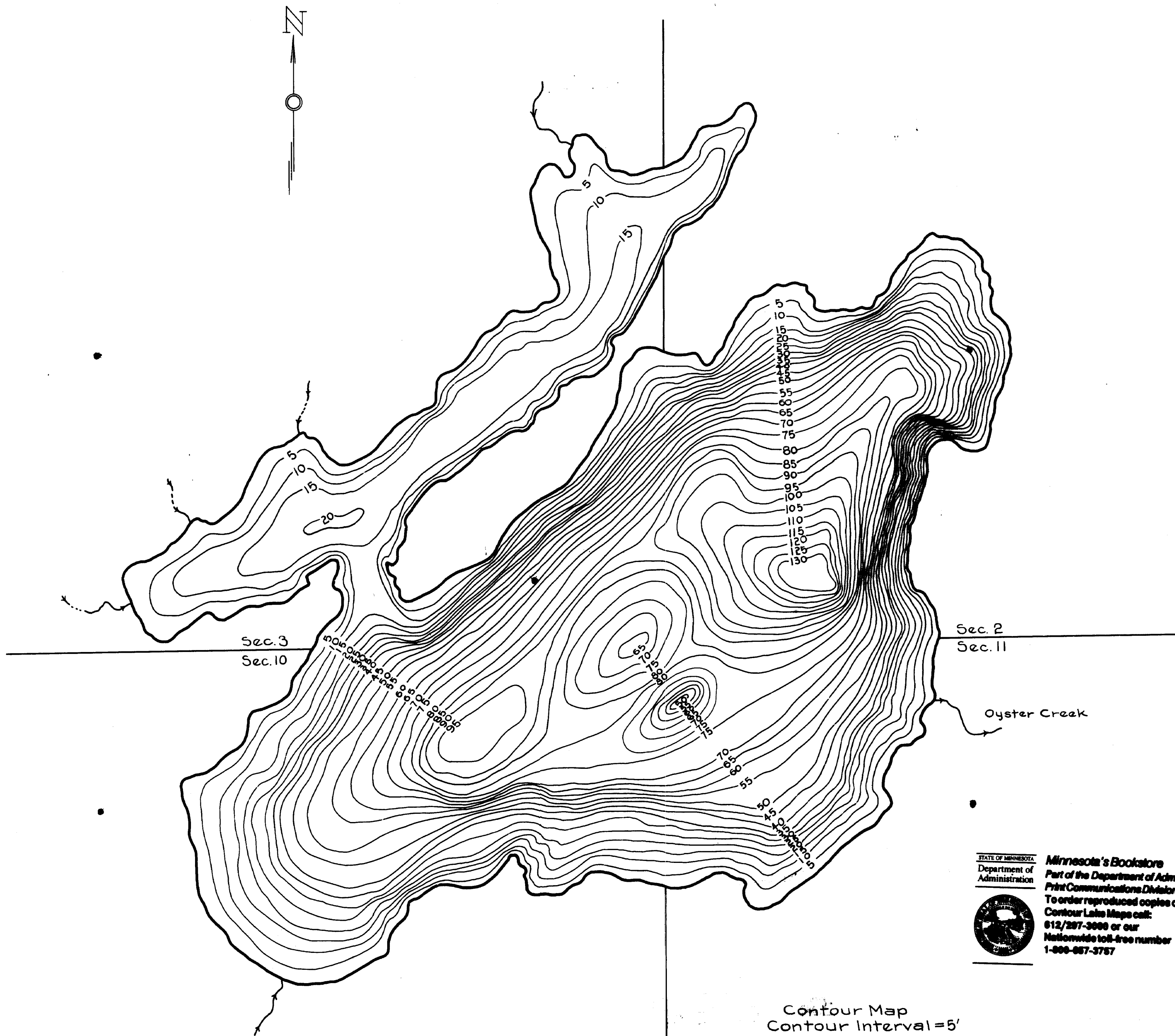
ST. LOUIS COUNTY

Superior National Forest
Minnesota

© COPYRIGHT 1993
STATE OF MINNESOTA
DEPARTMENT OF NATURAL RESOURCES
DIVISION OF FISH AND WILDLIFE

Area 714.3 Acres
Length of Shore Line 8.2 Miles

THIS MAP WAS REPRODUCED BY THE
STATE OF MINNESOTA. THE
ACCURACY OF THE INFORMATION
CONTAINED HEREIN IS NOT
GUARANTEED.



STATE OF MINNESOTA
Department of
Administration

Minnesota's Bookstore
Part of the Department of Administration
Print Communications Division
To order reproduced copies of
Contour Lake Maps call:
612/297-3000 or our
Nationwide toll-free number
1-800-657-3757



Contour Map
Contour Interval = 5'

© State of Minnesota

© State of Minnesota 1964

C 843

J-16-20

OYSTER LAKE