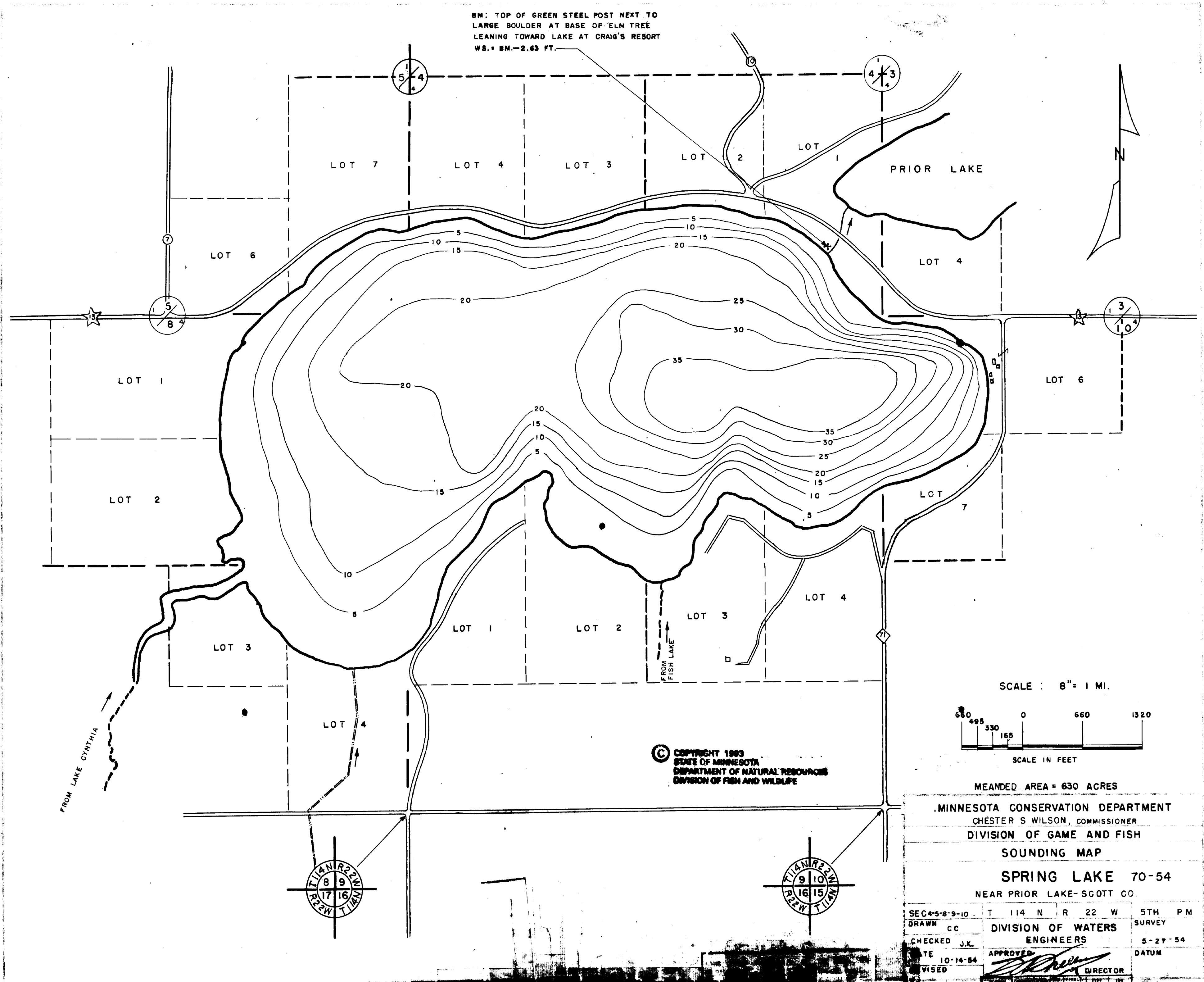
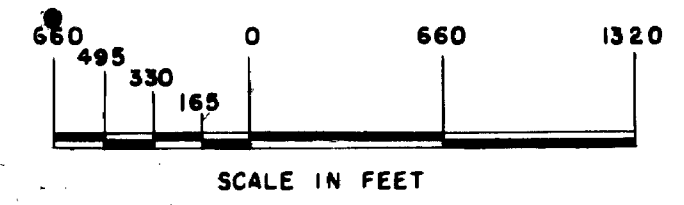


BM: TOP OF GREEN STEEL POST NEXT TO
LARGE BOULDER AT BASE OF ELM TREE
LEANING TOWARD LAKE AT CRAIG'S RESORT
WS. BM. - 2.63 FT.



SCALE : 8" = 1 MI.



MEANDED AREA = 630 ACRES

MINNESOTA CONSERVATION DEPARTMENT
CHESTER S WILSON, COMMISSIONER
DIVISION OF GAME AND FISH

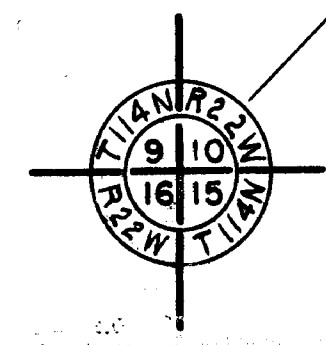
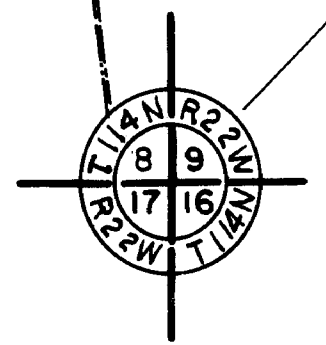
SOUNDING MAP

SPRING LAKE 70-54
NEAR PRIOR LAKE-SCOTT CO.

SEC 4-5-8-9-10	T 114 N R 22 W	5TH PM
DRAWN CC	DIVISION OF WATERS	SURVEY
CHECKED J.K.	ENGINEERS	5-27-54
DATE 10-14-54	APPROVED	DATUM
REVISED	<i>[Signature]</i>	DIRECTOR

43	0	10	0	1	OF 1
----	---	----	---	---	------

© COPYRIGHT 1963
STATE OF MINNESOTA
DEPARTMENT OF NATURAL RESOURCES
DIVISION OF FISH AND WILDLIFE



LISTED IN THE RECORDS OF THE STATE OF MINNESOTA