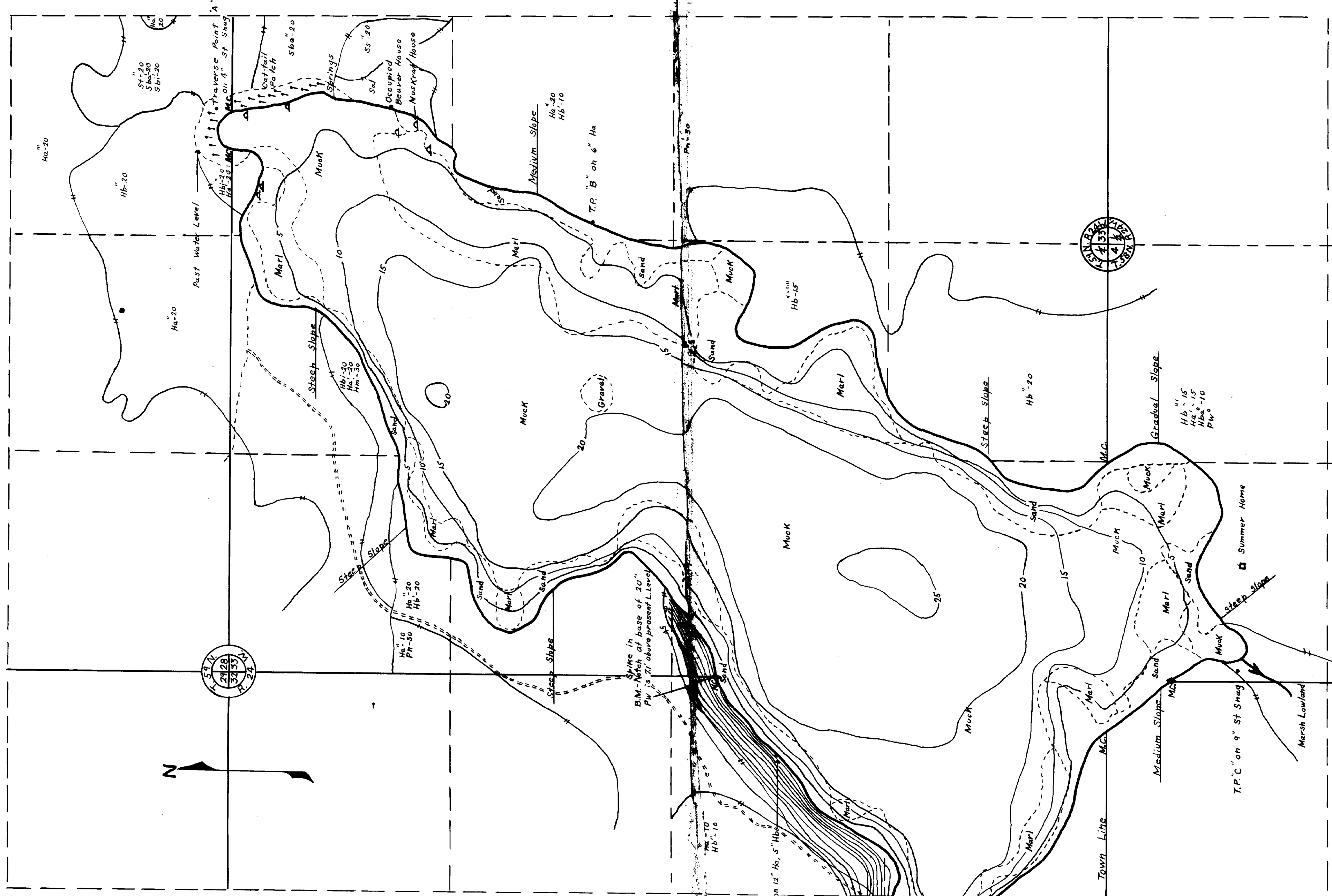


C-637



THIS PRINT FURNISHED BY THE MINNESOTA DEPARTMENT OF CONSERVATION, ST. PAUL, MINNESOTA. NO RESPONSIBILITY IS ASSUMED FOR ERRORS OR OMISSIONS. THE USER OF THIS PRINT ACCEPTS ALL LIABILITY FOR ANY DAMAGE TO PERSONS OR PROPERTY. CREDIT MUST BE GIVEN TO THE MINNESOTA DEPARTMENT OF CONSERVATION.

MINNESOTA STATE CCC
 LAKE INVESTIGATIONS
 ITASCA COUNTY
KING LAKE 31-258
 George Washington State Forest
 Owen Lake Camp, S-54
 Area of Lake - 2956 Acres
 Contour Interval 5 ft.
 Scale 1" = 400 ft.
 Surveyed March, 1938 by M. Morse
 Drawn - April, 1938
 Class III Lake

© COPYRIGHT 1933
 STATE OF MINNESOTA
 DEPARTMENT OF NATURAL RESOURCES
 DIVISION OF FISH AND WILDLIFE

© State of Minnesota 1967

MINNESOTA'S BIODIVERSITY
 Department of Administration
 Part of the Department of Administration
 Print Communications Division
 To order high school copies of
 Customer Lake Maps call
 612/737-3888 or our
 toll-free number
 1-800-657-0787



ITASCA COUNTY

C-637

14-169

637

King Lake 14-169