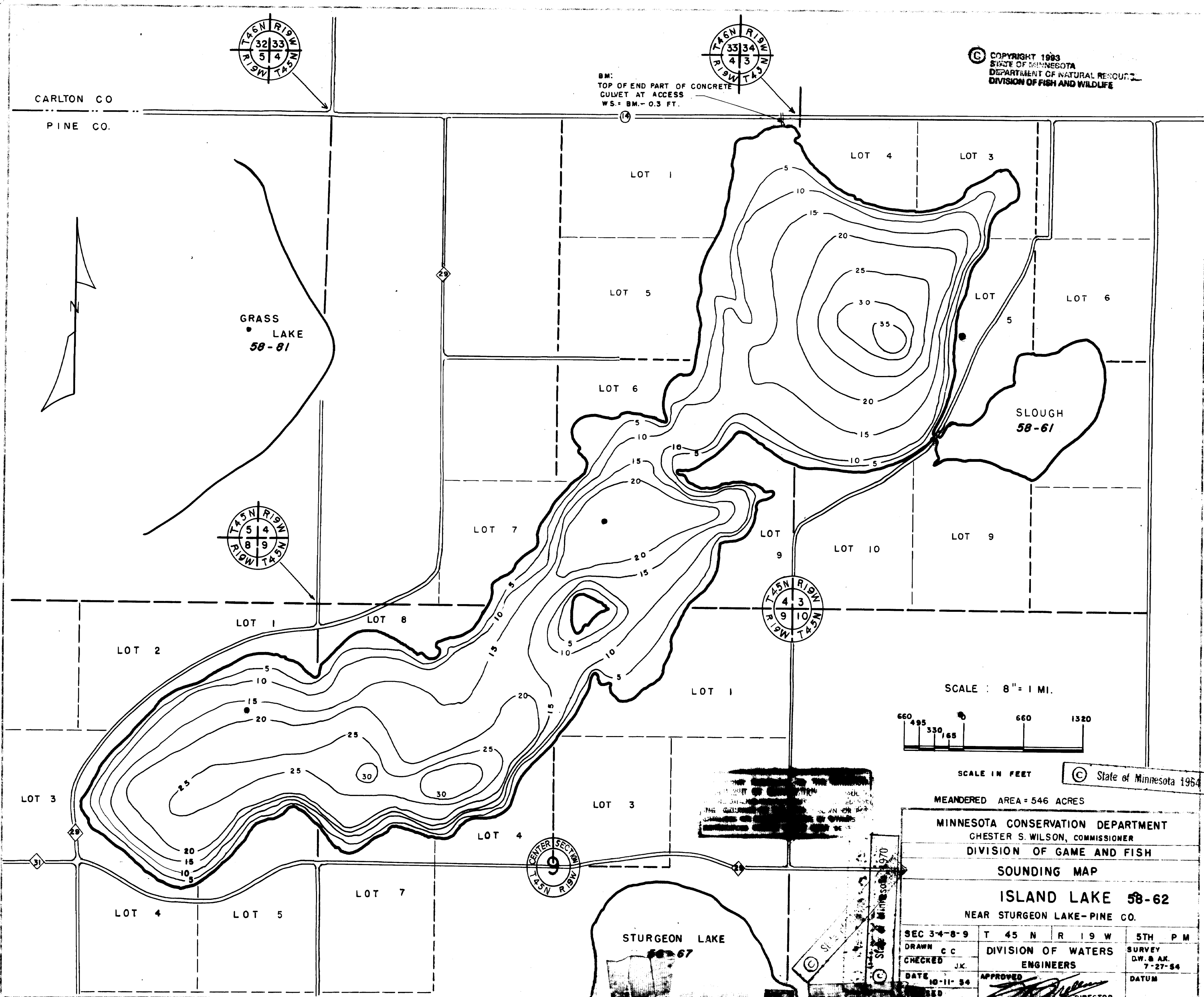


© COPYRIGHT 1983
 STATE OF MINNESOTA
 DEPARTMENT OF NATURAL RESOURCES
 DIVISION OF FISH AND WILDLIFE



SCALE : 8" = 1 MI.



SCALE IN FEET © State of Minnesota 1964

MEANDERED AREA = 546 ACRES

MINNESOTA CONSERVATION DEPARTMENT
 CHESTER S. WILSON, COMMISSIONER
 DIVISION OF GAME AND FISH

SOUNDING MAP

ISLAND LAKE 58-62
 NEAR STURGEON LAKE - PINE CO.

SEC 3-4-8-9	T 45 N	R 19 W	5TH P M
DRAWN c c	DIVISION OF WATERS		SURVEY
CHECKED J.K.	ENGINEERS		D.W. & A.K.
DATE 10-11-84	APPROVED		DATUM
	DIRECTOR		

10081 1 OF 1