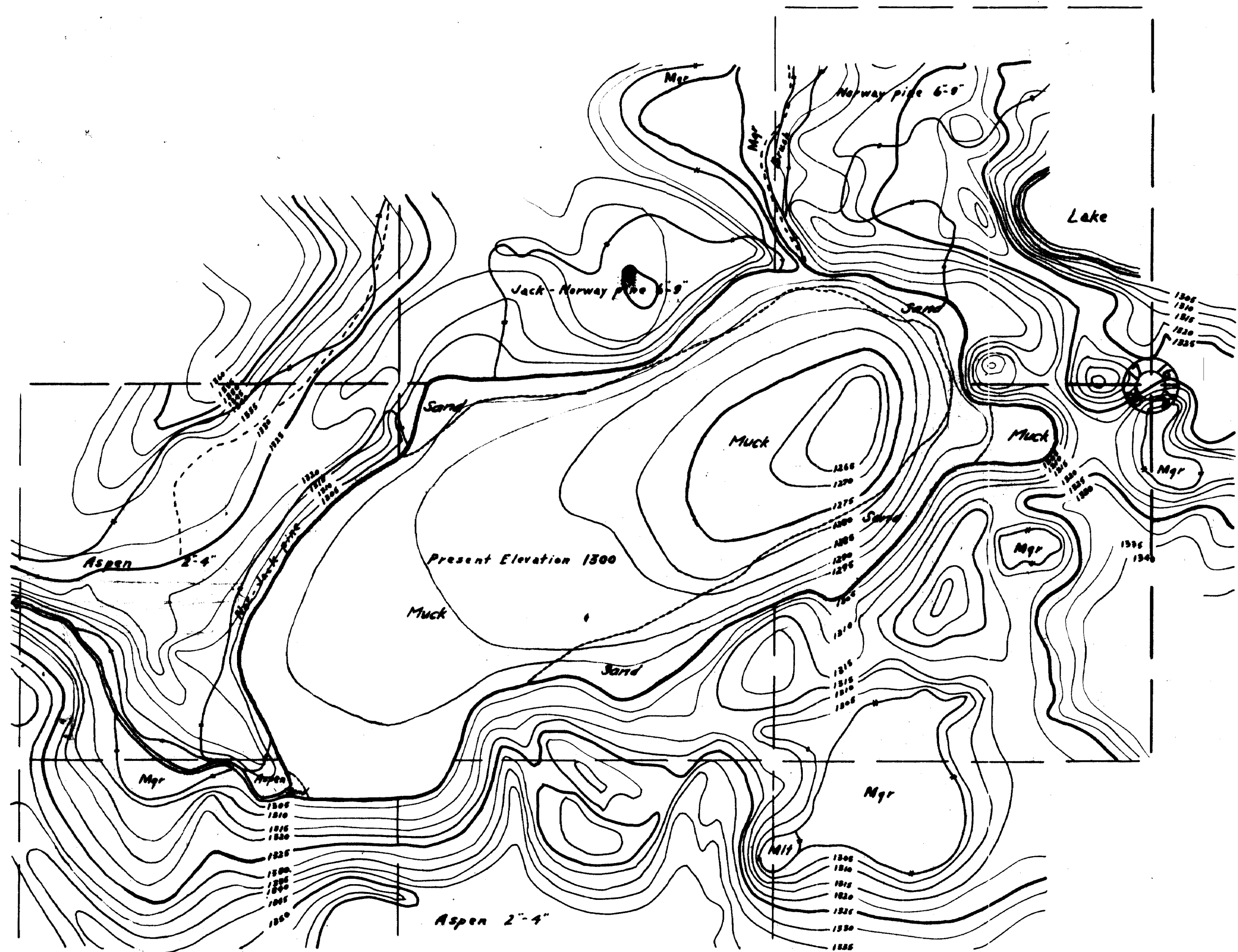


RECEIVED  
MAY 1 1937  
U.S. GEOLOGICAL SURVEY



D.O.W.  
FILE NO. 9 -



Minnesota State E. C. W.  
Lake Investigations  
**MULE LAKE 11-1007**  
T. 139 N. R. 26 W. Cass County  
Scale: 1 inch = 5 chains  
Mapped by H. Nihon  
E. C. W. Camp 3-97 5-5-34

1A-9