

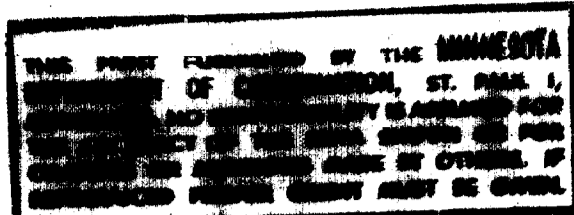
U.S. Department of Agriculture
Forest Service
LAKE AND STREAM SURVEY
TRAP & TABLE & BENCH
Superior National Forest
Minnesota

BENCH LAKE: Area: 25.7 Acres
Length of Shoreline: 1.02 Miles
Intensity of Soundings: .47 Per Acre
TABLE LAKE: Area: 20.4 Acres
Length of Shoreline: .9 Miles
Intensity of Soundings: .34 Per Acre
TRAP LAKE: Area: 59 Acres
Length of Shoreline: 1.7 Miles
Intensity of Soundings: .47 Per Acre

Location: Trap - Sec. 31, T64N, R2W ~ Table & Bench - Sec. 6, T64N, R2E

TABLE & BENCH LAKES

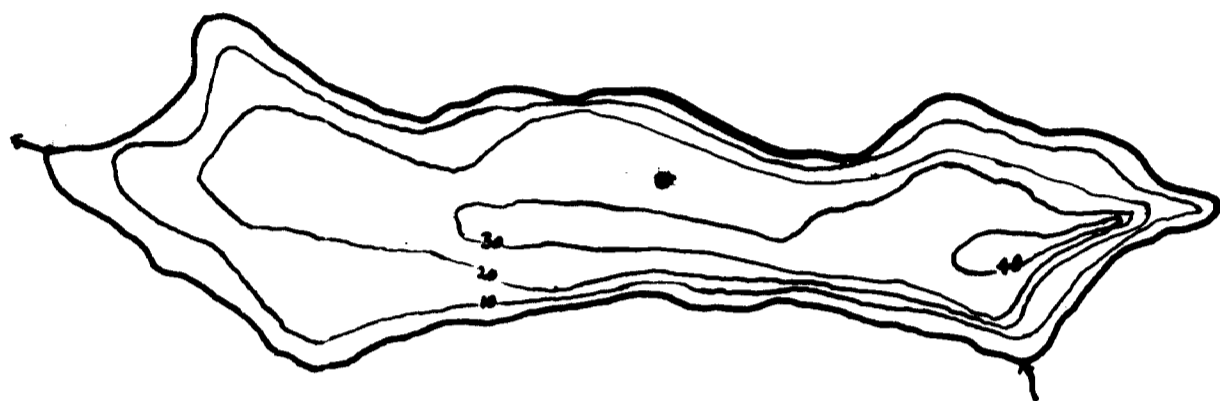
Date of Depth Survey: 8-10-39
Trap Lake
Date of Depth Survey: 7-20-38
Scale: 8 inches = 1 Mile



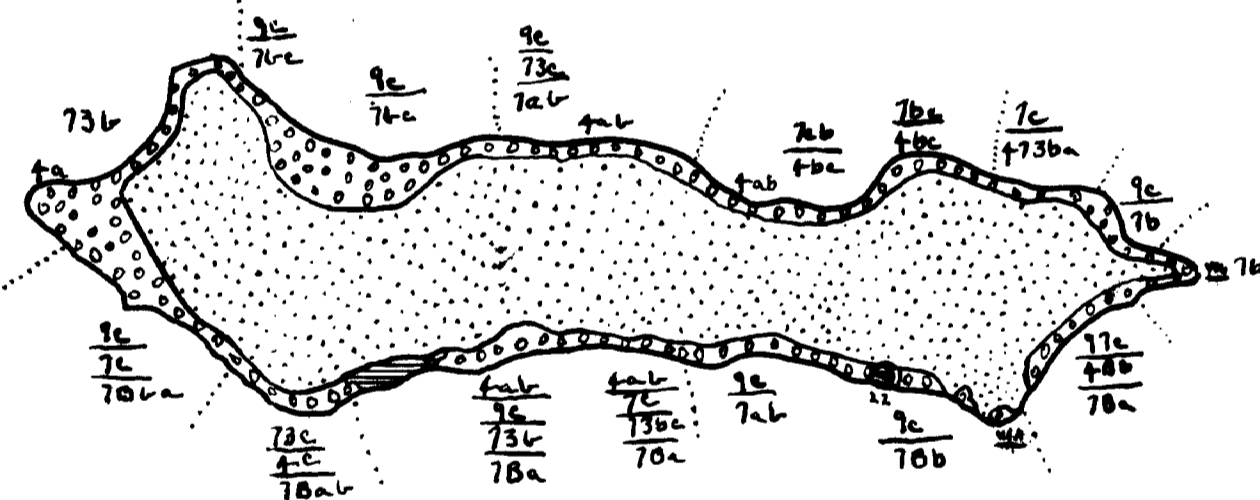
COOK COUNTY

© COPYRIGHT 1983
STATE OF MINNESOTA
DEPARTMENT OF NATURAL RESOURCES
DIVISION OF FISH AND WILDLIFE

WANIHIGAN (TRAP) LAKE 16-349



Contour Map
Contour Interval - 10'



Cover type and
Lake Bottom Soil type Map

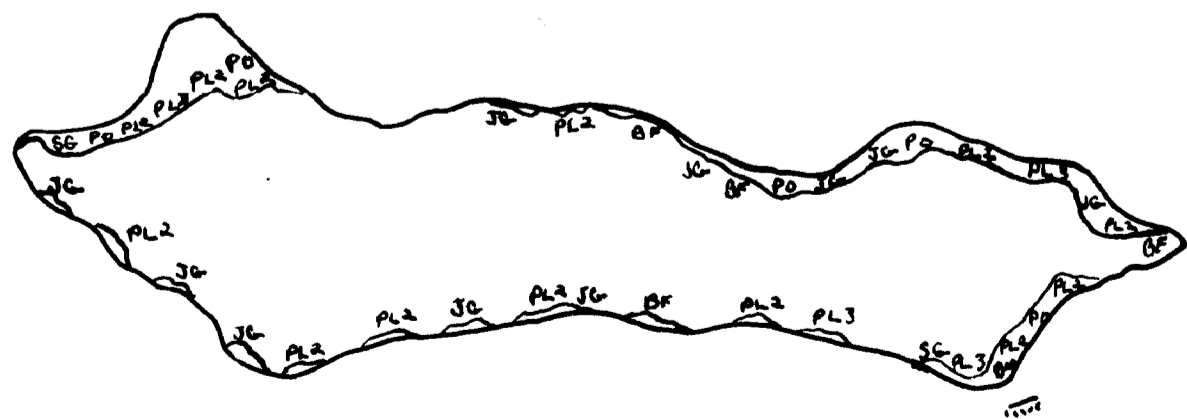
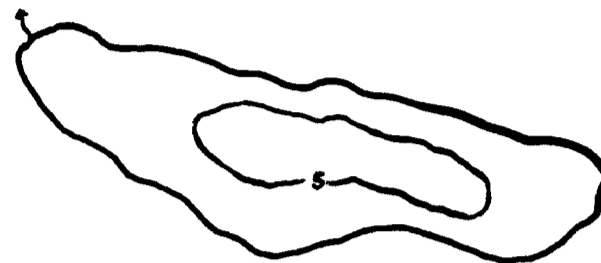
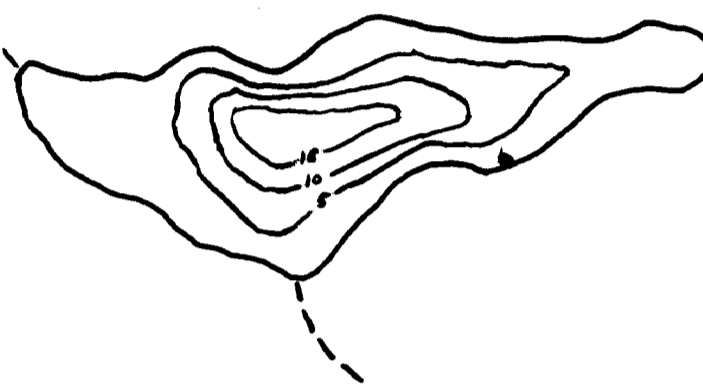


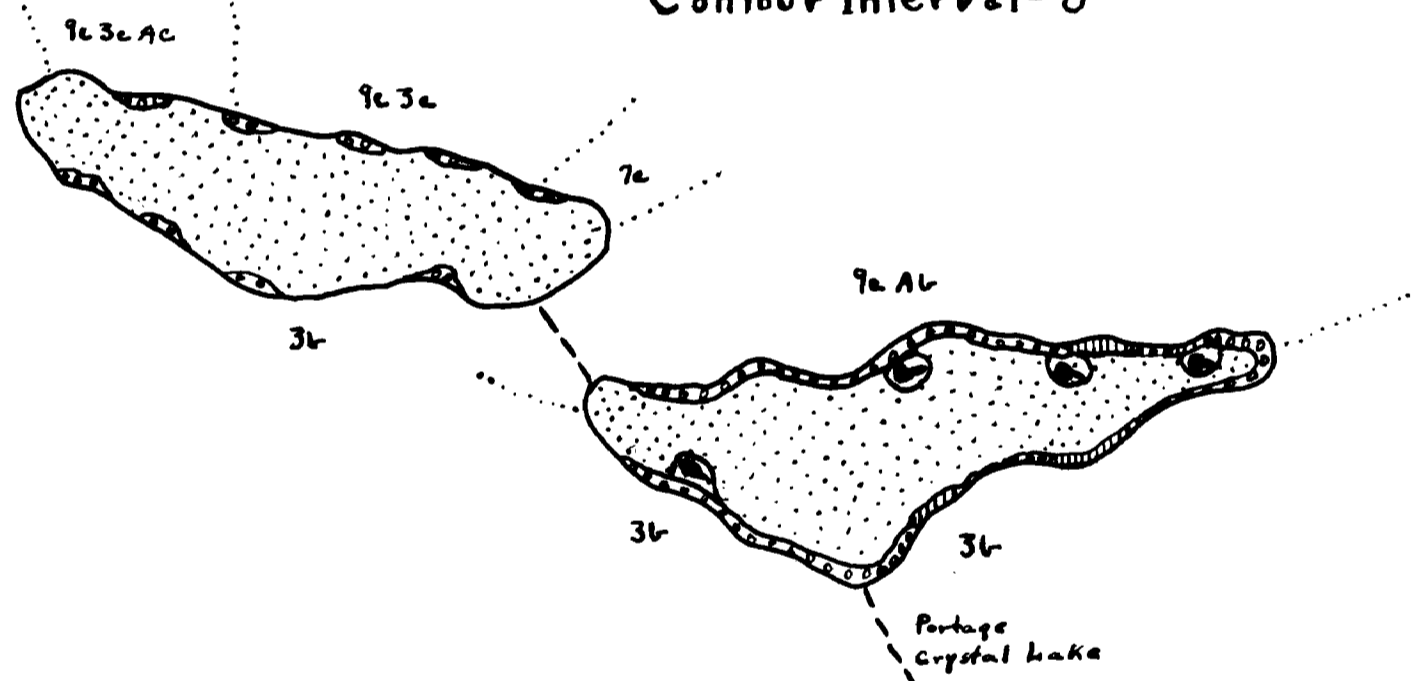
TABLE LAKE 16-64



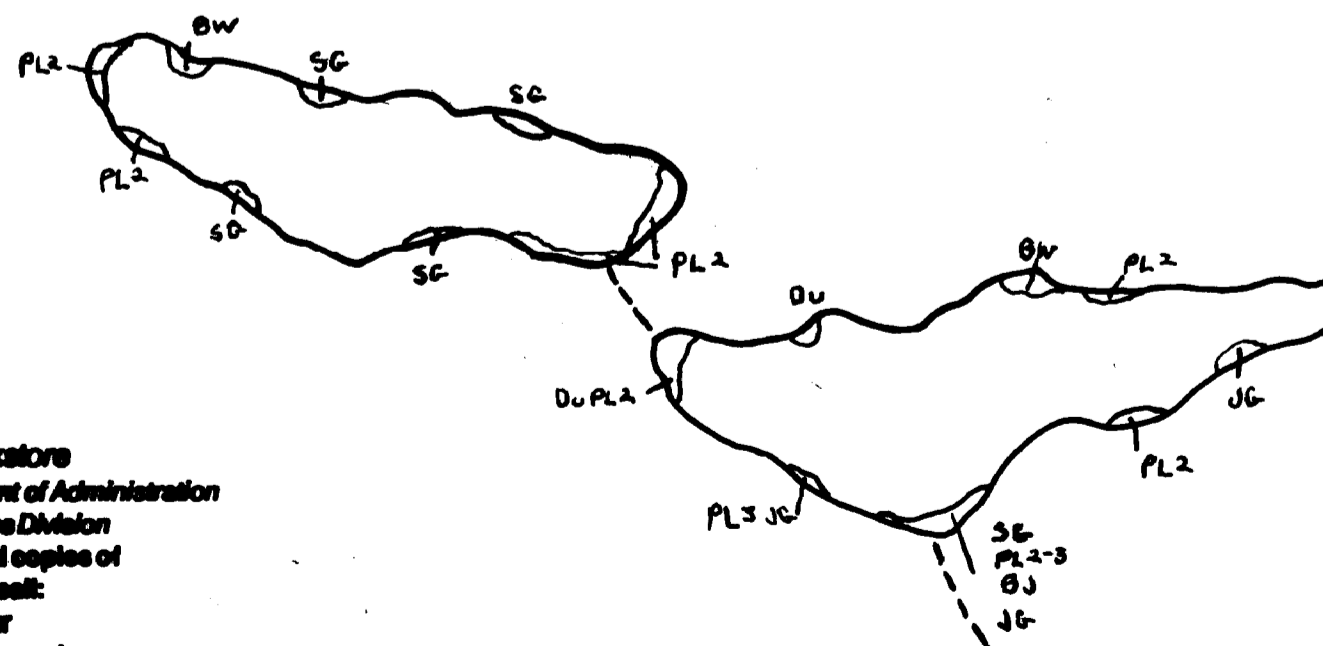
BENCH LAKE 16-63



Contour Map
Contour Interval - 5'



Cover type and
Lake Bottom Soil type Map



Aquatic Vegetation Map

STATE OF MINNESOTA
Department of
Administration



Minnesota's Bookstore
Part of the Department of Administration
Print Communications Division
To order reproduced copies of
Contour Lake Maps call:
612/297-3000 or our
Nationwide toll-free number
1-800-657-3787