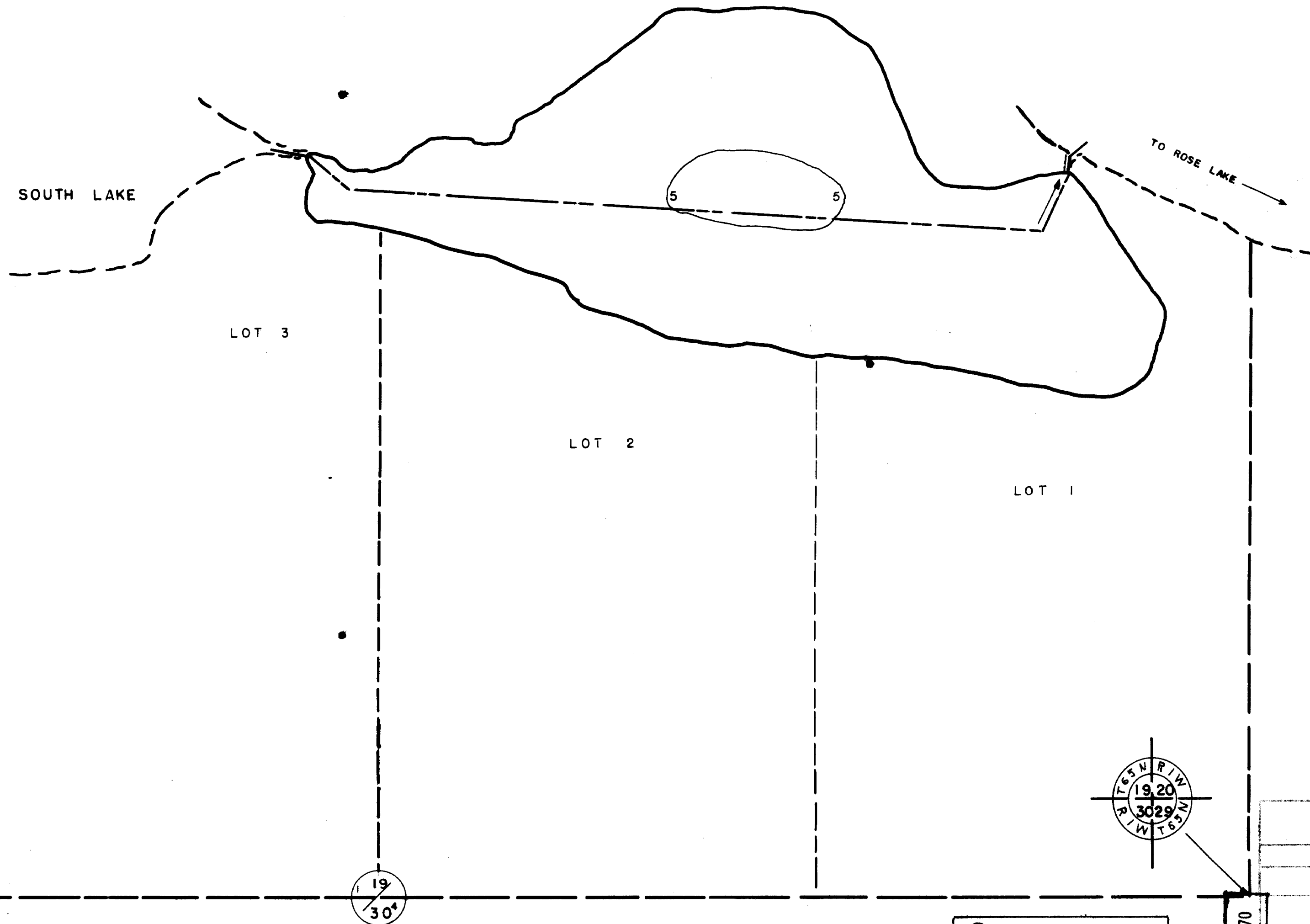


DOMINION OF CANADA



© COPYRIGHT 1993
STATE OF MINNESOTA
DEPARTMENT OF NATURAL RESOURCES
DIVISION OF FISH AND WILDLIFE

SCALE 20" = 1 MI.



SCALE IN FEET

AREA = 56 ACRES

MINNESOTA CONSERVATION DEPARTMENT
CHESTER S. WILSON, COMMISSIONER
DIVISION OF GAME AND FISH

SOUNDING - MAP

RAT LAKE 16-229

NEAR GRAND MARAIS - COOK CO.

SEC 19	T 65 N	R 1 W	4TH P M
DRAWN C.C.	DIVISION OF WATERS		SURVEY
CHECKED J.K.	ENGINEERS		GCC 1941
DATE 6-29-94	APPROVED	DATUM	
REVISED	DIRECTOR		
AGENCY	COUNTY	TYPE	JOB
42	0	0	0 8 1
			1 OF 1

© State of Minnesota 1964

THIS PRINT FURNISHED BY THE MINNESOTA DEPARTMENT OF CONSERVATION, ST. PAUL 1, MINNESOTA. NO RESPONSIBILITY IS ASSUMED FOR THE ACCURACY OF THE DATA SHOWN OR FOR CHANGES OR ADDITIONS MADE BY OTHERS. IF REPRODUCED PROPER CREDIT MUST BE GIVEN.

STATE OF MINNESOTA
Department of Administration
Minnesota's Bookstore
Part of the Department of Administration
Print Communications Division
To order reproduced copies of
Contour Lake Maps call:
612/297-3000 or our
Nationwide toll-free number
1-800-657-5757



D.O.W.
FILE

State of Minnesota 1970