

ALL INFORMATION CONTAINED HEREIN IS UNCLASSIFIED EXCEPT WHERE SHOWN OTHERWISE. ANY CHANGES OR ADDITIONS MADE BY OTHERS, IF REPRODUCED PROPER CREDIT MUST BE GIVEN.

LAKE AND STREAM SURVEY HUNGRY JACK LAKE 16-227

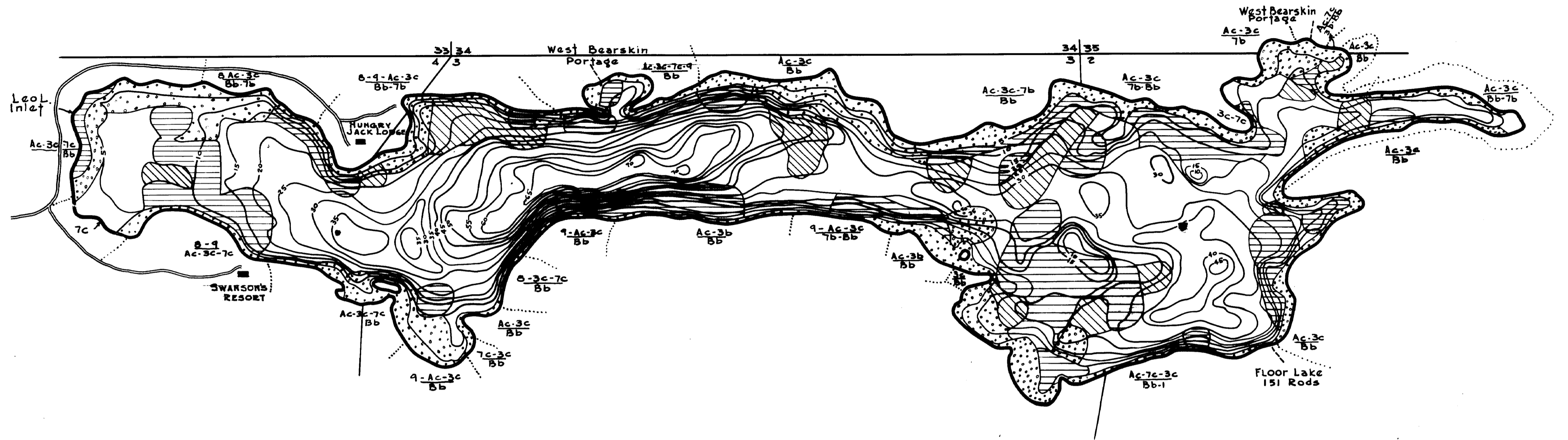
Location: Sec. 2,3,4,35, T.64-G.5N. R.1.W.
Scale: 8 Inches = 1 Mile

COOK COUNTY

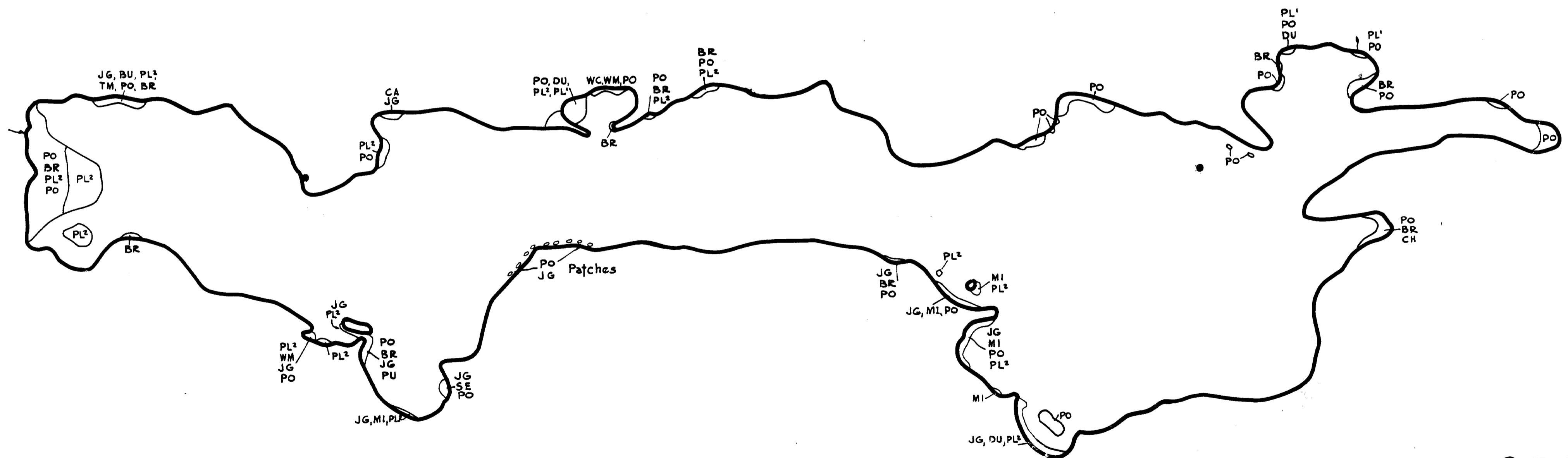
Superior National Forest
Minnesota

Area 459.2 Acres
Length of Shoreline 8 Miles

COPYRIGHT 1993
STATE OF MINNESOTA
DEPARTMENT OF NATURAL RESOURCES
DIVISION OF FISH AND WILDLIFE



Contour, Cover Type and
Lake Bottom Soil Type Map



Aquatic Vegetation Map

C-279

Minnesota 1993