

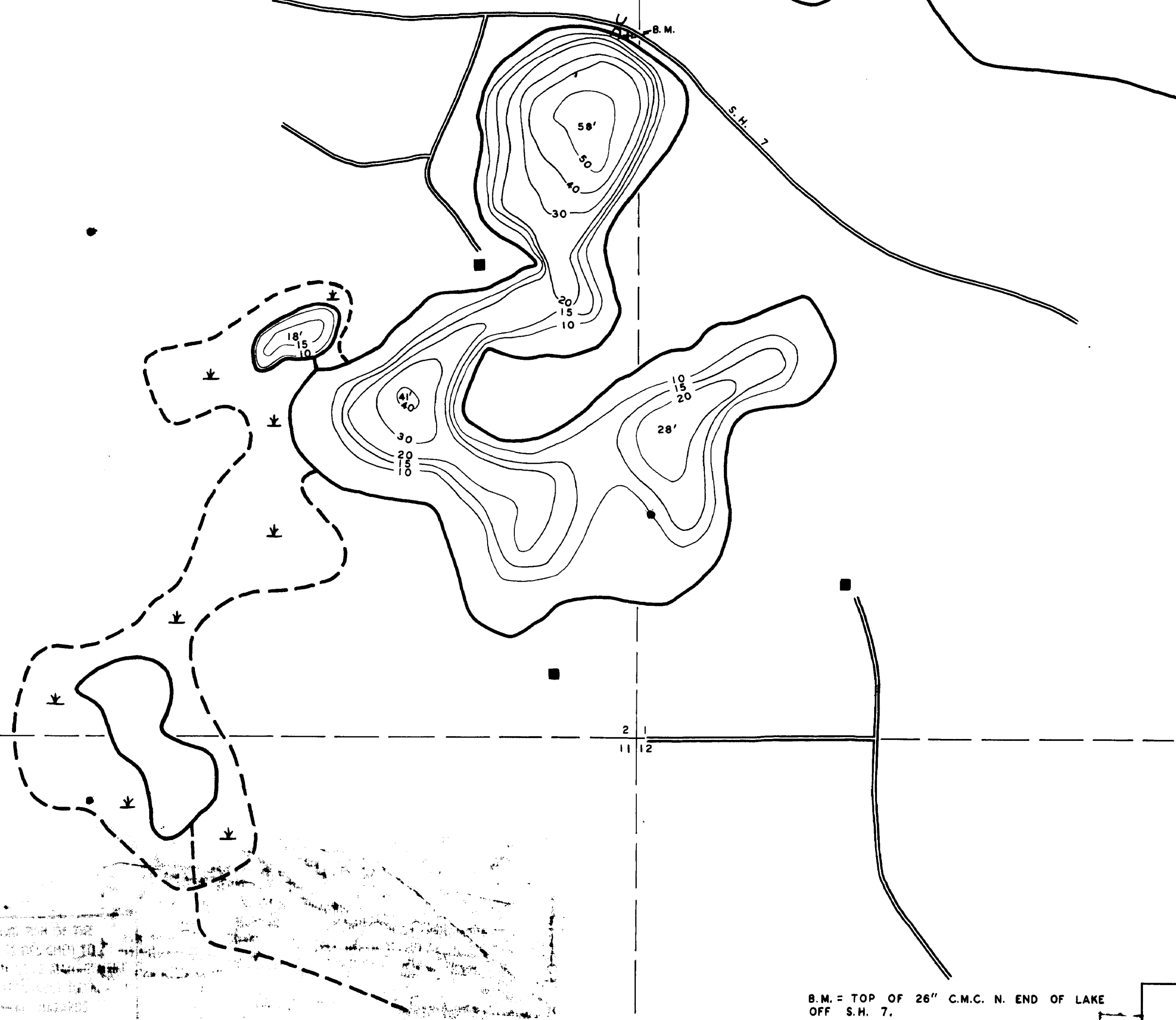
LAKE MINNETONKA

HENNEPIN COUNTY
CARVER COUNTY

35 36
2 1

B.M.

S.H. 7



© COPYRIGHT 1993
STATE OF MINNESOTA
DEPARTMENT OF NATURAL RESOURCES
DIVISION OF FISH AND WILDLIFE

STATE OF MINNESOTA
Department of Administration
Minnesota's Bookstore
Part of the Department of Administration
Print Communications Division
To order reproduced copies of
Contour Lake Maps call:
612/297-3000 or our
Nationwide toll-free number
1-800-657-3757



B.M. = TOP OF 26" C.M.C. N. END OF LAKE
OFF S.H. 7.
W.S. = B.M. - 2.4'.
AREA = 162.3 ACRES. (PLANIMETERED)

THIS MAP WAS PREPARED BY THE MINNESOTA DEPARTMENT OF NATURAL RESOURCES, DIVISION OF FISH AND WILDLIFE, ST. PAUL, MINN. FOR THE CARVER COUNTY BOARD OF SUPERVISORS. THE DATA SHOWN OR FOR WHICH THIS MAP WAS MADE BY OTHERS, IF ANY, IS INDICATED BY A DASHED LINE AND NOT MAPPER.

THIS PRINT FURNISHED BY THE MINNESOTA DEPARTMENT OF NATURAL RESOURCES, ST. PAUL, MINN. FOR THE CARVER COUNTY BOARD OF SUPERVISORS. THE DATA SHOWN OR FOR WHICH THIS MAP WAS MADE BY OTHERS, IF ANY, IS INDICATED BY A DASHED LINE AND NOT MAPPER.

© State of Minnesota 1994

C 95

STATE OF MINNESOTA DEPARTMENT OF CONSERVATION		
DIVISION OF GAME AND FISH BUREAU OF RESEARCH AND PLANNING		
ZUMBRA LAKE 10-41 CARVER COUNTY		
TWP. 116 N.	R. 24 W.	SEC. 1-2
FIELDWORK H. K. DATE 8-28-56	DRAWN BY D. G. L. DATE 4-12-57	PROJ. IDENT. NO. D. J. FW-1-R-1