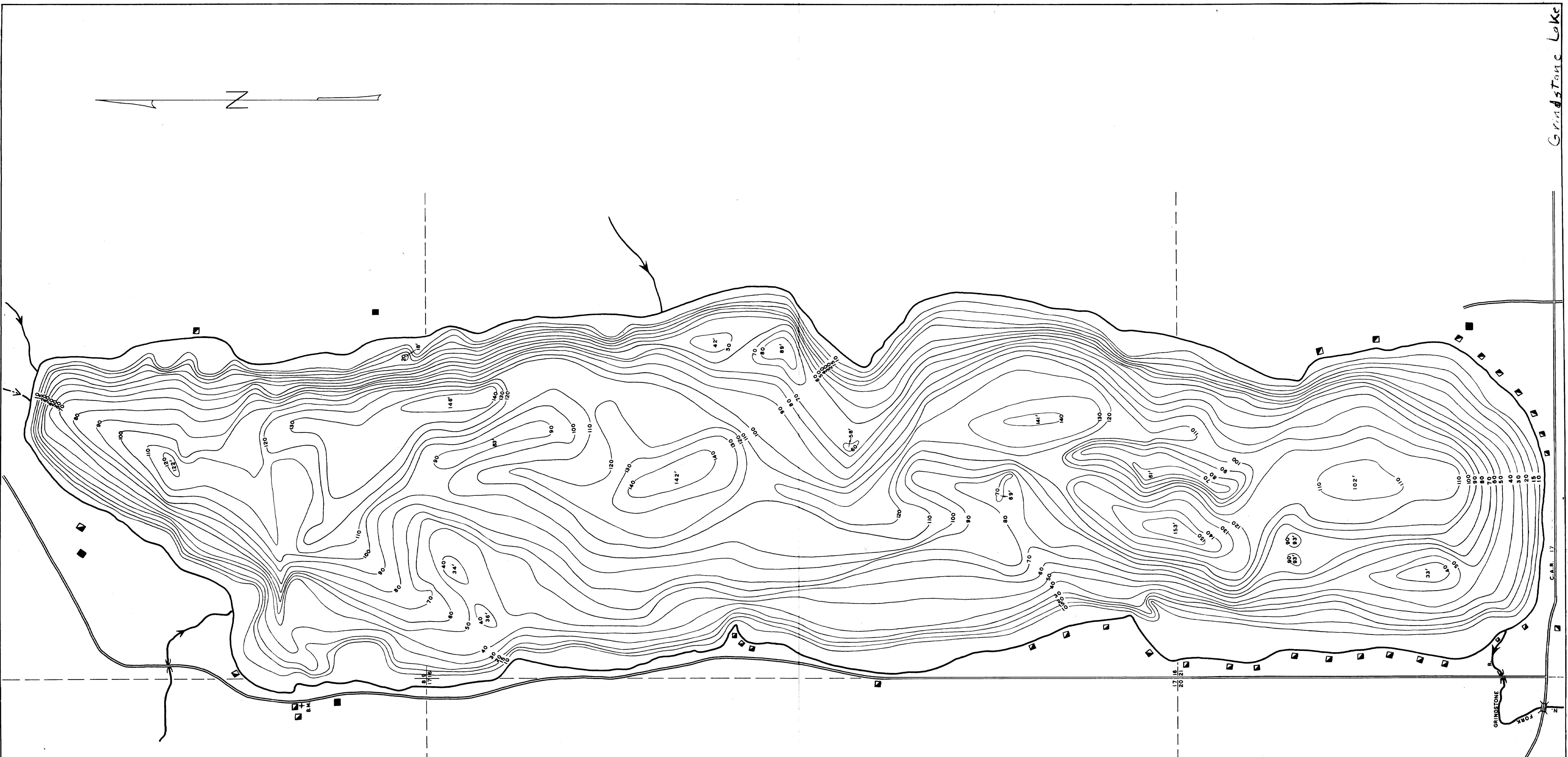


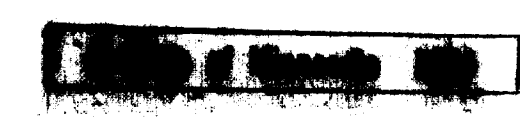
Grindstone Lake



© COPYRIGHT 1983
 STATE OF MINNESOTA
 DEPARTMENT OF NATURAL RESOURCES
 DIVISION OF FISH AND WILDLIFE



B.M. = TOP OF SECOND STEP AGAINST
 BLDG. OF WALBERG'S TWO STORY COTTAGE
 N.W. CORNER OF LAKE 80' FROM LAKE
 W.S. = B.M. - 5.5'
 AREA = 528.6 ACRES (PLANIMETERED)



D.O.W.
 FILE NO. **D-11**

| | | |
|--|---------------------------------|----------------------------|
| STATE OF MINNESOTA DEPARTMENT OF CONSERVATION | | |
| DIVISION OF GAME AND FISH BUREAU OF RESEARCH AND PLANNING | | |
| GRINDSTONE LAKE 58-123 PINE COUNTY | | |
| TWP. 42 N. | R. 21 W. | SEC. 8-9-16-17-21 |
| FIELDWORK D.G.L. DATE 8-21-57 | DRAWN BY D.G.L. DATE 11-2-57 | PRINTED BY DATE 11-2-57 |

OUTLINE TRACED FROM AERIAL PHOTO.

B-0235

THIS MAP WAS PREPARED BY THE BUREAU OF RESEARCH AND PLANNING, DIVISION OF GAME AND FISH, DEPARTMENT OF CONSERVATION, STATE OF MINNESOTA. IT IS THE PROPERTY OF THE STATE OF MINNESOTA AND IS LOANED TO YOU. IT IS TO BE KEPT IN GOOD CONDITION AND RETURNED TO THE BUREAU OF RESEARCH AND PLANNING WHEN YOU ARE THROUGH WITH IT.