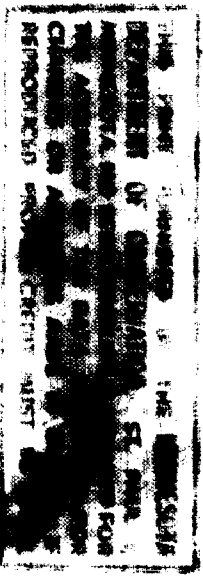
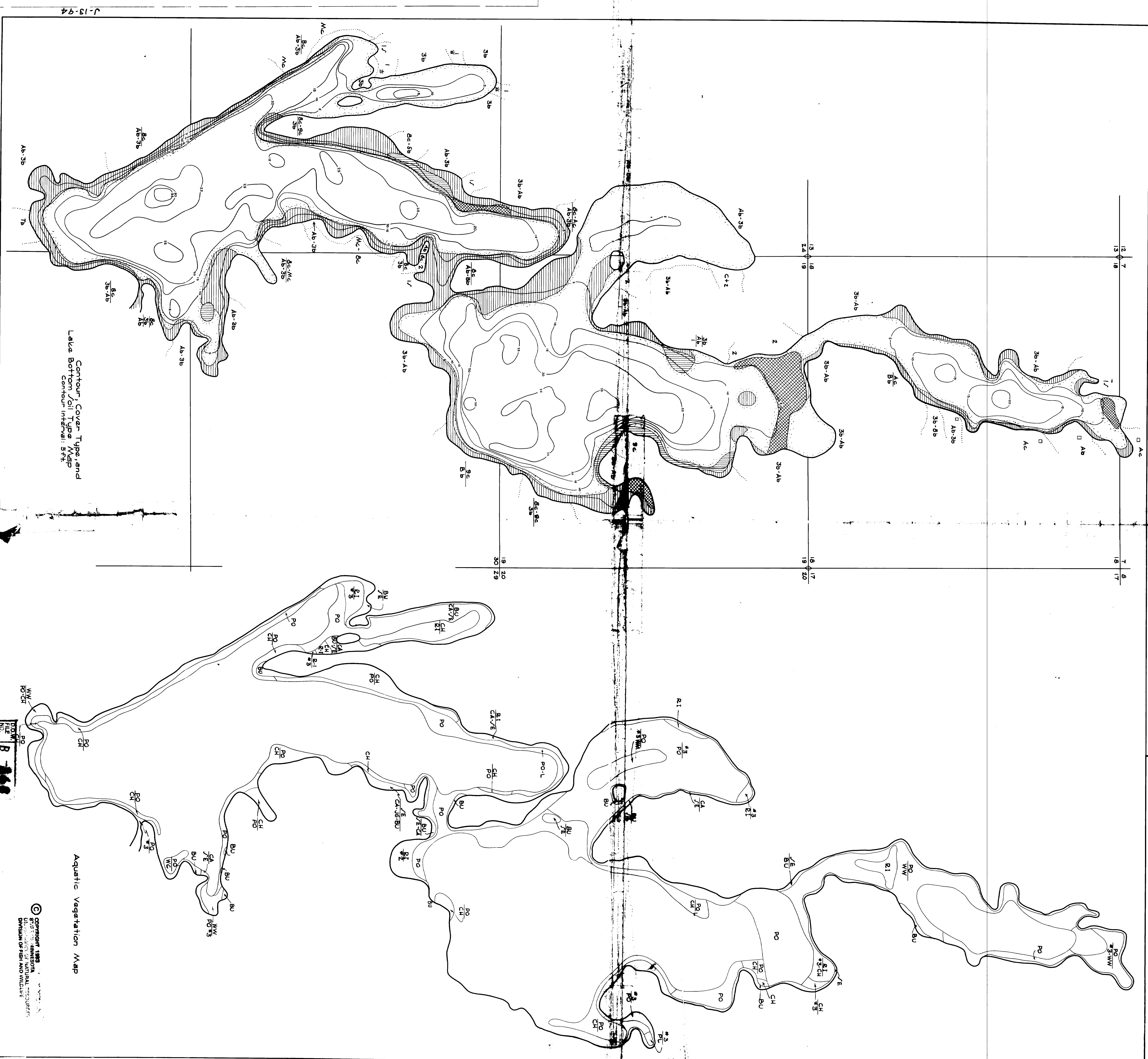


Location: Sec. 16, R. 30, S. 1, T. 58 N. R. 25 W.
 Scale: 1 inch = 1 mile



R-9
 U. S. Department of Agriculture
 Forest Service
 LAKE AND STREAM SURVEY
 SPIDER LAKE
 Chippewa National Forest
 Minnesota

Area: 104.5 Acres
 Length of Shoreline: 16 Miles



Contour, Cover Type, and
 Lake Bottom Soil Type Map
 Contour Interval: 5 ft.

Aquatic Vegetation Map

FORM NO. B-160
 1968

© CHIPPENAW NATIONAL FOREST
 MINNESOTA
 DIVISION OF FISH AND WILDLIFE

W-68 7124

J-13-94

J-13-94