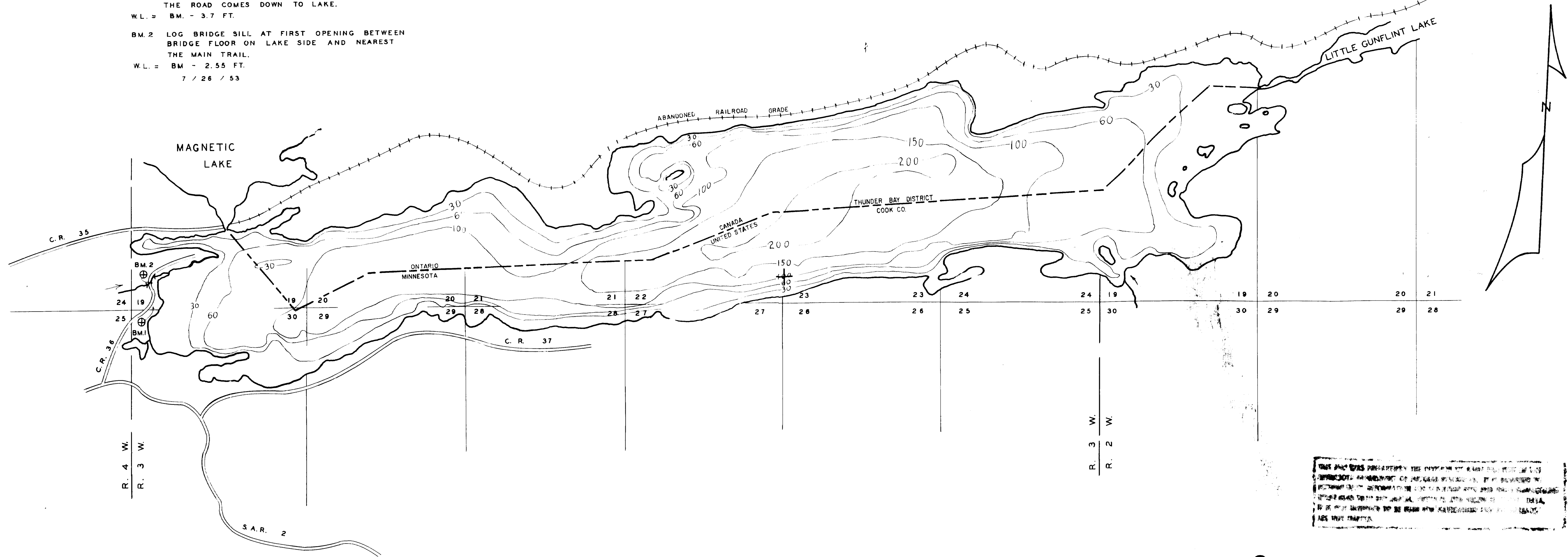


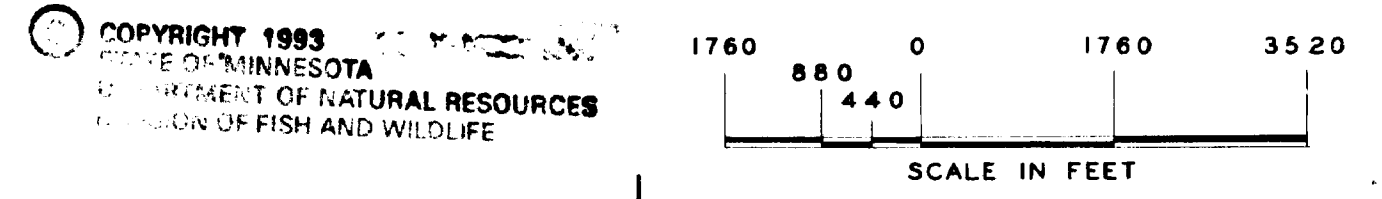
+
 BM 1 STEEL POST AT BASE OF LARGE JACK PINE ALONG ROAD TO BORDER LANDS RESORT JUST AFTER THE ROAD COMES DOWN TO LAKE.
 W.L. = BM. - 3.7 FT.
 BM 2 LOG BRIDGE SILL AT FIRST OPENING BETWEEN BRIDGE FLOOR ON LAKE SIDE AND NEAREST THE MAIN TRAIL.
 W.L. = BM. - 2.55 FT.
 7 / 26 / 53

DOMINION OF CANADA
 ONTARIO

T. 165 N.



THIS MAP WAS PREPARED BY THE MINNESOTA DEPARTMENT OF CONSERVATION AS PART OF THE STATE'S NATURAL RESOURCES SURVEY. IT IS THE PROPERTY OF THE STATE OF MINNESOTA AND IS LOANED TO YOU. IT IS NOT TO BE REPRODUCED OR TRANSMITTED IN ANY FORM OR BY ANY MEANS, ELECTRONIC OR MECHANICAL, INCLUDING PHOTOCOPYING, RECORDING, OR BY ANY INFORMATION STORAGE AND RETRIEVAL SYSTEM, WITHOUT THE WRITTEN PERMISSION OF THE COMMISSIONER OF CONSERVATION.



State of Minnesota 1964

MINNESOTA'S Bookstore
 Part of the Department of Administration
 Print Communications Division
 To order reproduced copies of
 Contour Lake Maps call:
 612/297-3000 or our
 Nationwide toll-free number
 1-800-657-3757

OUTLINE TRACED FROM 1930 P. M. A. PHOTO
 STATE OF MINNESOTA
 DEPARTMENT OF CONSERVATION
 CHESTER S. WILSON - COMMISSIONER
 DIVISION OF GAME AND FISH
 BUREAU OF FISHERIES
GUNFLINT LAKE (16-356)
 COOK COUNTY T. 65 R. 2, 3 W.
 FIELD WORK AND BASE MAP BY
 H. K. DATE 7/26/53
 DRAWN BY J. M. DATE 5/6/54
 FISHERIES RESEARCH UNIT

B - 86