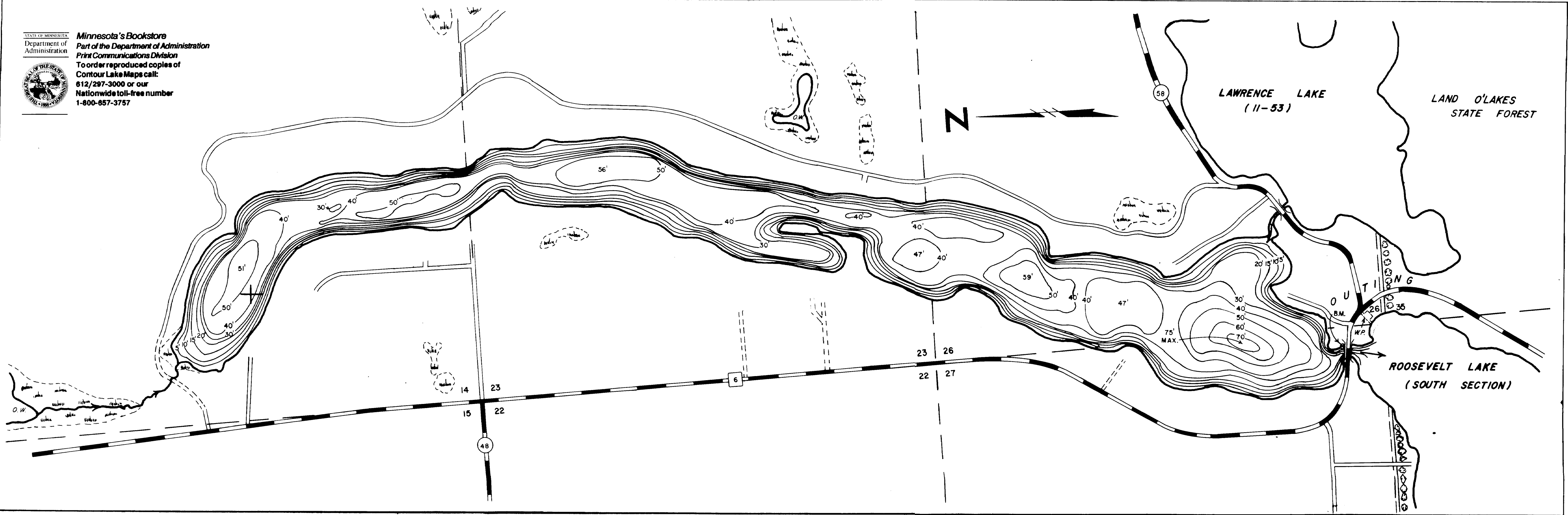


Minnesota's Bookstore
 Department of Administration
 Part of the Department of Administration
 Print Communications Division
 To order reproduced copies of
 Contour Lake Maps call:
 612/297-3000 or our
 Nationwide toll-free number
 1-800-857-3757



**NORTH SECTION OF
 ROOSEVELT LAKE**

PLANIMETERED AREA = 305.0 ACRES
 LITTORAL AREA = 75.0 ACRES
 LENGTH OF SHORELINE = 6.7 MILES

LEGEND

- BITUMINOUS ROAD
- GRAVEL ROAD
- UNIMPROVED ROAD
- TRAIL
- STATE HIGHWAY
- COUNTY STATE AID HIGHWAY
- STATE FOREST
- BRIDGE
- DAM
- OPEN WATER
- MARSH AREA
- WAYSIDE PARK AND ACCESS

B.M. = TOP OF STEEL GUARD RAIL AT
 NORTHEAST CORNER OF BRIDGE
 ON HIGHWAY #6 BETWEEN THE
 NORTH AND SOUTH SECTIONS OF
 THE LAKE.
 W.S.E. = 11.7' BELOW B.M.

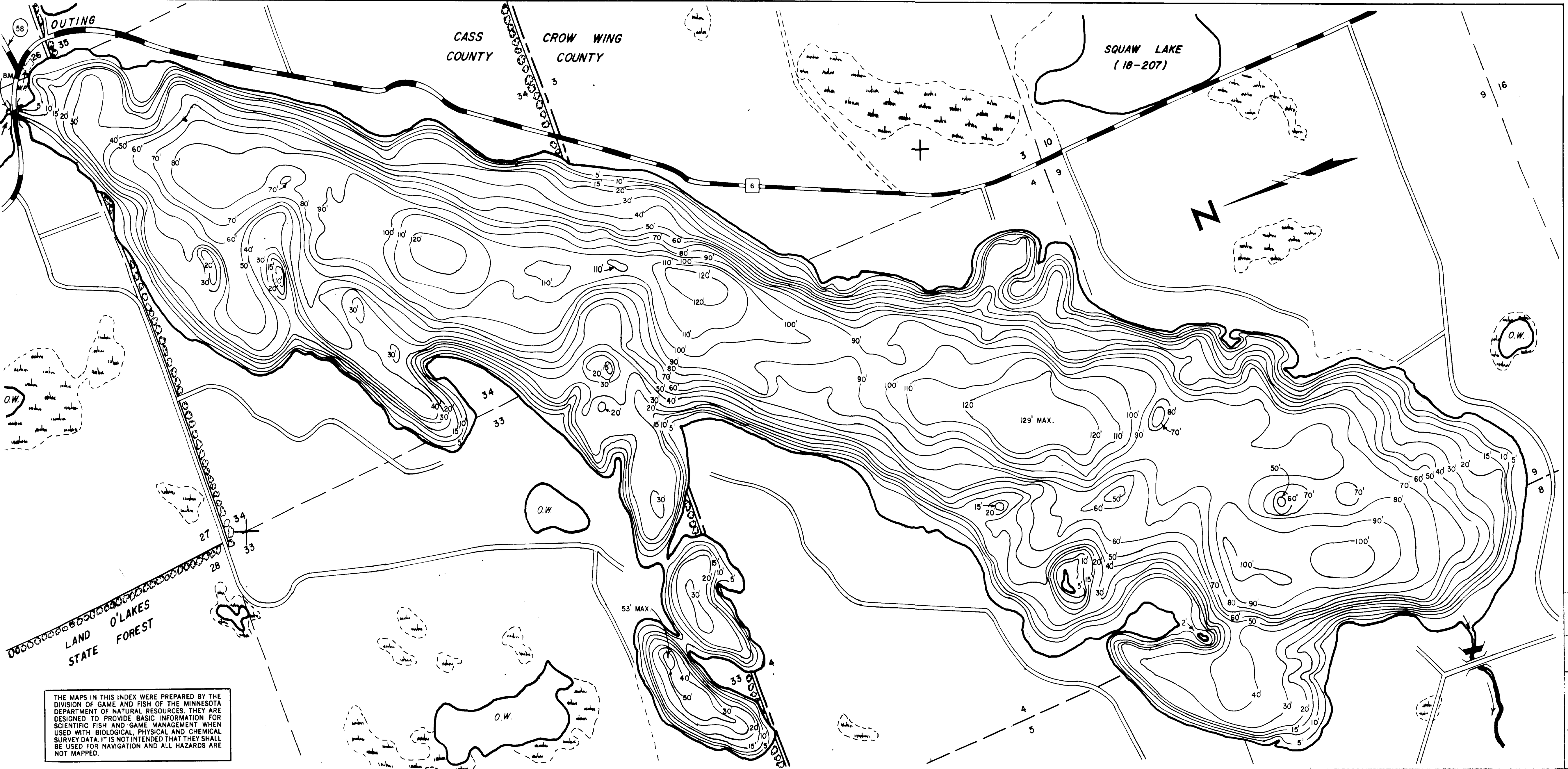
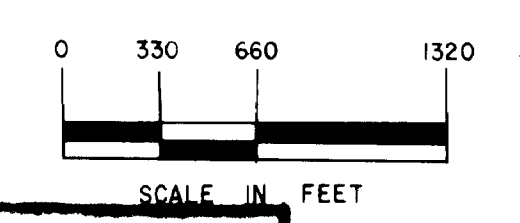
OUTLINE DRAWN FROM 1960 AERIAL
 PHOTOS (CRW-3-171, CRW-4-43,
 CAS-4-44, CAS-3-74, AND
 CAS-3-172 THRU 175.)

CONTOURS REVISED FROM 1938 C.C.C. MAP

© COPYRIGHT 1993
 STATE OF MINNESOTA
 DEPARTMENT OF NATURAL RESOURCES
 DIVISION OF FISH AND WILDLIFE

**SOUTH SECTION OF
 ROOSEVELT LAKE**

PLANIMETERED AREA = 1279.5 ACRES
 LITTORAL AREA = 314.5 ACRES
 LENGTH OF SHORELINE = 11.2 MILES
 NUMBER OF ISLANDS = 2
 LENGTH OF ISLANDS' SHORELINE = 0.2 MILE
 TOTAL AREA OF ISLANDS = 1.5 ACRES



THE MAPS IN THIS INDEX WERE PREPARED BY THE
 DIVISION OF GAME AND FISH OF THE MINNESOTA
 DEPARTMENT OF NATURAL RESOURCES. THEY ARE
 DESIGNED TO PROVIDE BASIC INFORMATION FOR
 SCIENTIFIC FISH AND GAME MANAGEMENT WHEN
 USED WITH BIOLOGICAL, PHYSICAL AND CHEMICAL
 SURVEY DATA. IT IS NOT INTENDED THAT THEY SHALL
 BE USED FOR NAVIGATION AND ALL HAZARDS ARE
 NOT MAPPED.

STATE OF MINNESOTA
 DEPARTMENT OF CONSERVATION
 DIVISION OF GAME AND FISH
 TECHNICAL SURVEY SECTION

ROOSEVELT LAKE (11-43)
 CASS & CROW WING COUNTIES

T. 138; 139 R. 26 S. VARIOUS

FIELDWORK E.V.H. & F.H.A. DRAWN BY B.D.S. PROJ. IDENT. NO.
 DATE 9-5-68 DATE 2-18, 19, 20-70 F.W.18-15