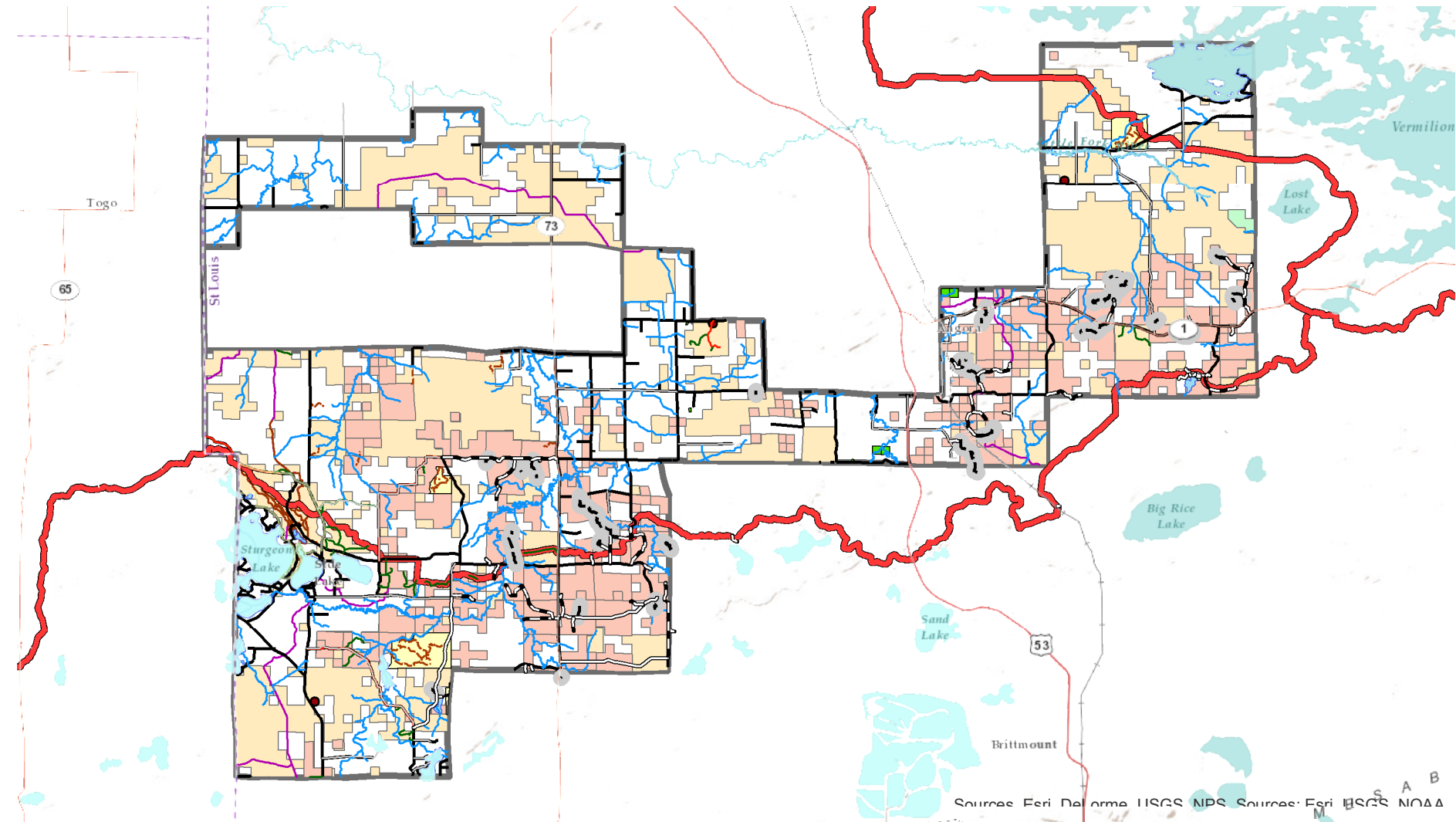


Sturgeon River State Forest

146,691 Acres

Motor Vehicle Use Classification: Managed/Limited/Closed



- Roads and Trails**

DNR Roads and Trails

 - Minimum Maintenance Road
 - System Road
 - Designated Nonmotorized Trails
 - Snowmobile Trails
 - Designated OHV Trails
 - Hunter-Walking Trails
 - Minnesota State Trails (MS 85.015)

County Roads

 - County Roads

USFS Roads and Trails

 - Roads Open to All Vehicles, Yearlong
- Roads Open to All Vehicles, Seasonal
 - Roads Open to Highway Legal Vehicles Only, Yearlong
 - Roads Open to Highway Legal Vehicles Only, Seasonal
 - Special Designation, Yearlong
 - Special Designation, Seasonal
 - Trails Open to Vehicles 50' or Less in Width, Yearlong
 - Trails Open to Vehicles 50' or Less in Width, Seasonal
 - Special Designation, Yearlong
 - Special Designation, Seasonal

Water Features

 - Rivers and Streams
 - Lakes
- Other Features**

 - Boundary Waters Canoe Area Wilderness
 - Ruffed Grouse Management Areas
 - Areas with Limitations
 - Scientific and Natural Areas
 - DNR Gravel Pits

Land Ownership

 - Lake County
 - St. Louis County
 - US Government
 - DNR-Owned Land
 - State Forest Boundaries

Sources: Esri, DeLorme, USGS, NPS, Sources: Esri, USGS, NOAA



0 1 2 4 6 8 Miles

