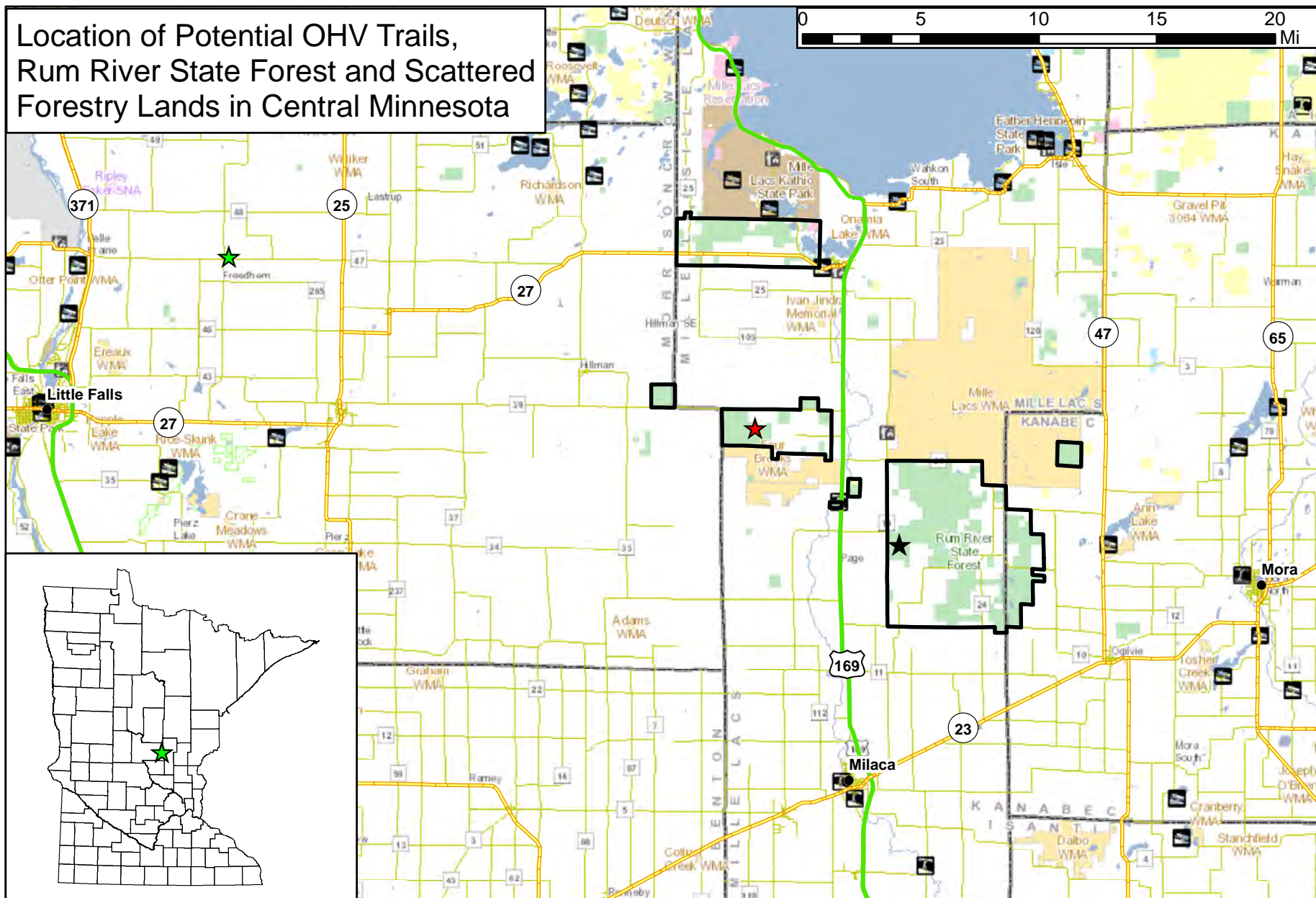
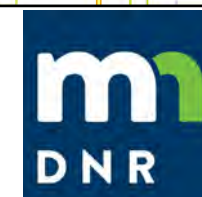


# Location of Potential OHV Trails, Rum River State Forest and Scattered Forestry Lands in Central Minnesota

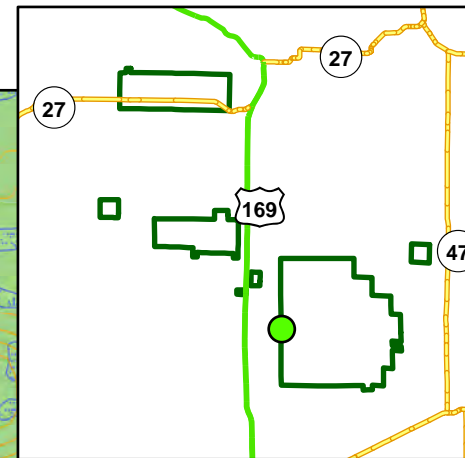
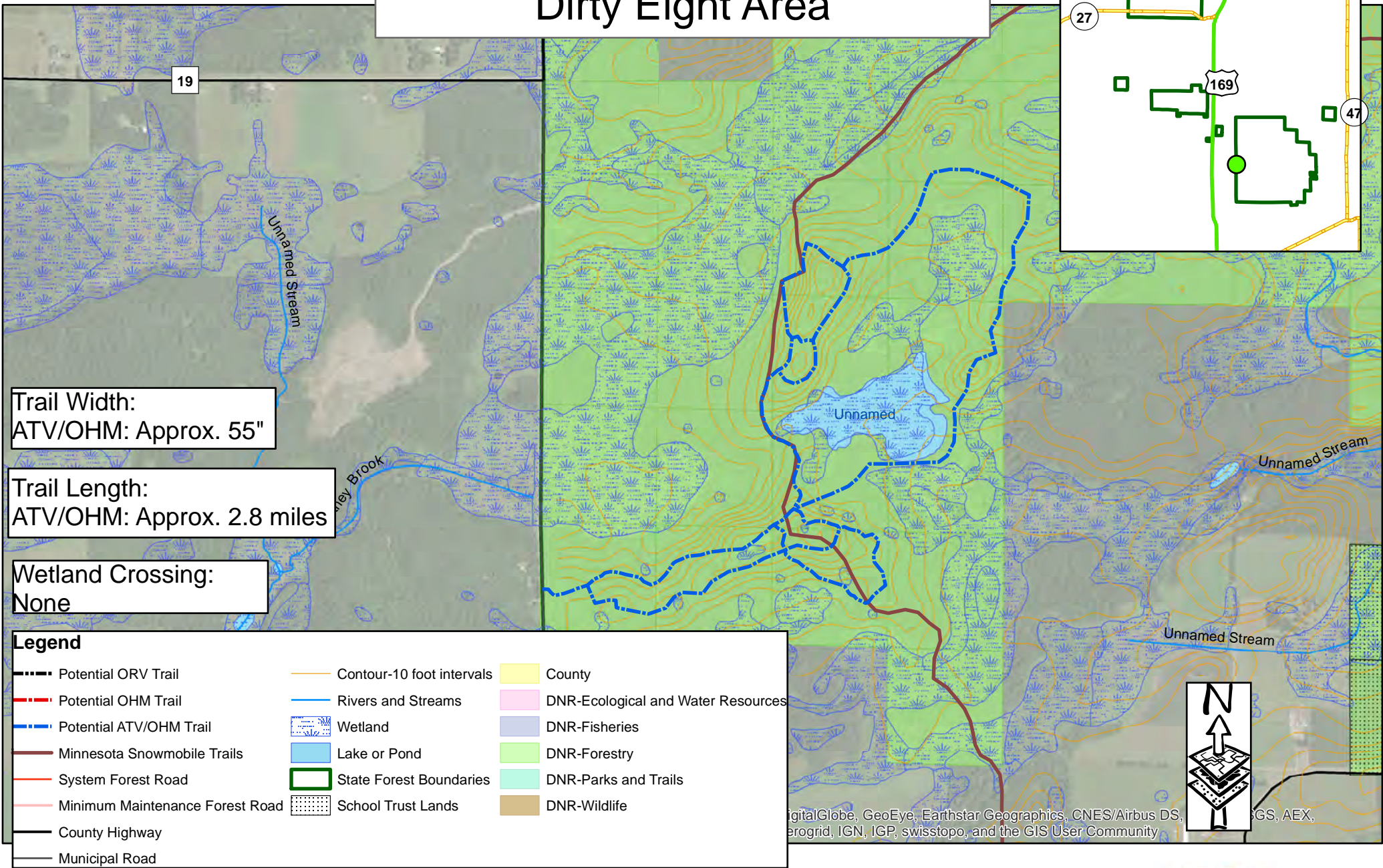


## Legend

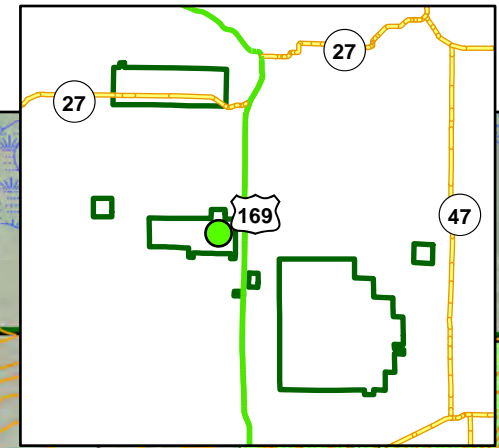
- ★ ORV Trails
- ★ Daily Pit Area
- ★ Dirty Eight Area
- ▭ Rum River State Forest Boundary
- ▭ Other State Forest Boundaries
- U.S. Trunk Highway
- MN Trunk Highway



# Potential ATV (CI 1)/OHM Trails Dirty Eight Area



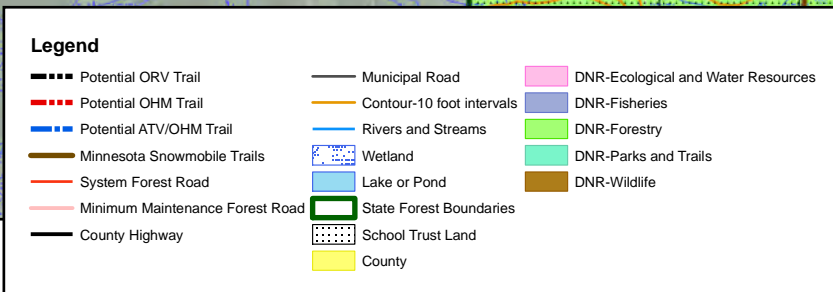
# Potential ATV (CI 1)/OHM Trails Daily Pit Area



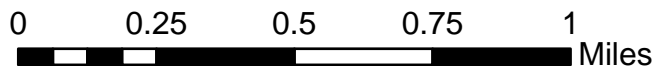
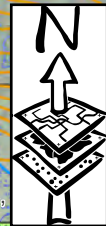
Trail Width:  
ATV/OHM: Approx. 55"  
OHM: Approx. 18-24"

Trail Length:  
ATV/OHM: Approx. 2.3 miles  
OHM: Approx. 5.9 miles

Wetland Crossing:  
OHM: Approx 508 LF  
(0.02 acres)



Source: Esri, DigitalGlobe, GeoEye, Earthstar Geographics, CNES/Airbus DS, Getmapping, Aerogrid, IGN, IGP, swisstopo, and the GIS User Community



# Potential ORV Trail

