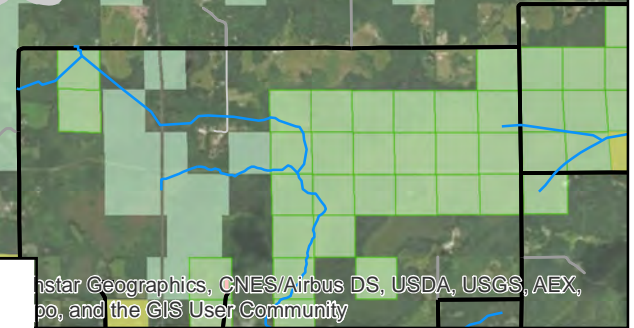
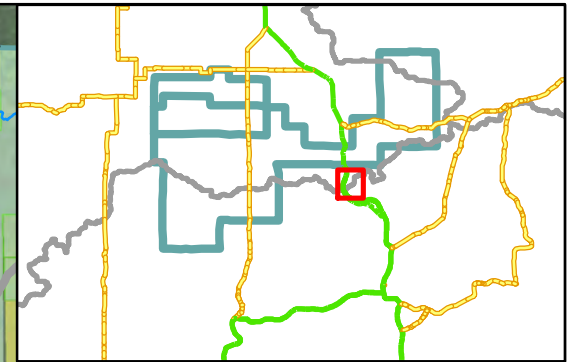
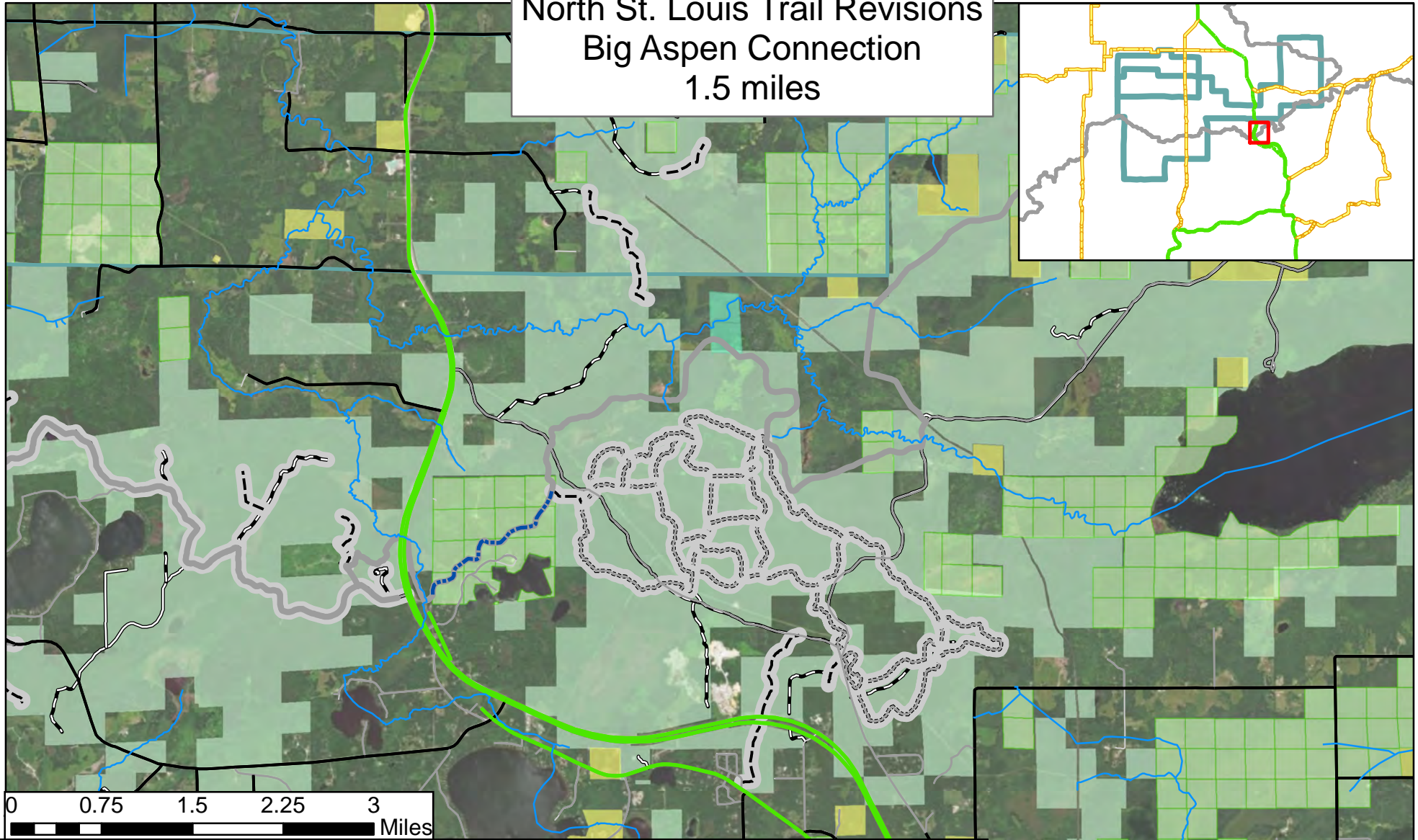


North St. Louis Trail Revisions Big Aspen Connection 1.5 miles



Legend		Land Manager	
Roads/Trails		<ul style="list-style-type: none"> DNR Forestry DNR Parks and Trails, Not State Park DNR Parks and Trails, State Park County US Forest Service State Forests - Statutory Boundaries 	
<ul style="list-style-type: none"> Proposed New ATV/OHM Trail Hunter Walking Trails David Dill/Taconite State Trail U.S. Trunk Highway MN Trunk Highway County Highway Municipal Road Township or Other Road DNR System Forest Roads DNR Minimum Maintenance Forest Roads USFS Roads Open to All Vehicles, Yearlong USFS Roads Open to All Vehicles, Seasonal USFS Roads Open to Highway Legal Vehicles Only, Yearlong 	<ul style="list-style-type: none"> USFS Roads Open to Highway Legal Vehicles Only, Seasonal USFS Special Designation, Yearlong USFS Special Designation, Seasonal USFS Trails Open to Vehicles 50" or Less in Width, Yearlong USFS Trails Open to Vehicles 50" or Less in Width, Seasonal 	<ul style="list-style-type: none"> Ruffed Grouse Management Areas Area with Limitations Embedded Closure 	

Map data provided by Esri, Intelstar Geographics, CNES/Airbus DS, USDA, USGS, AEX, GeoEye, IGN, GeoEye, and the GIS User Community



